

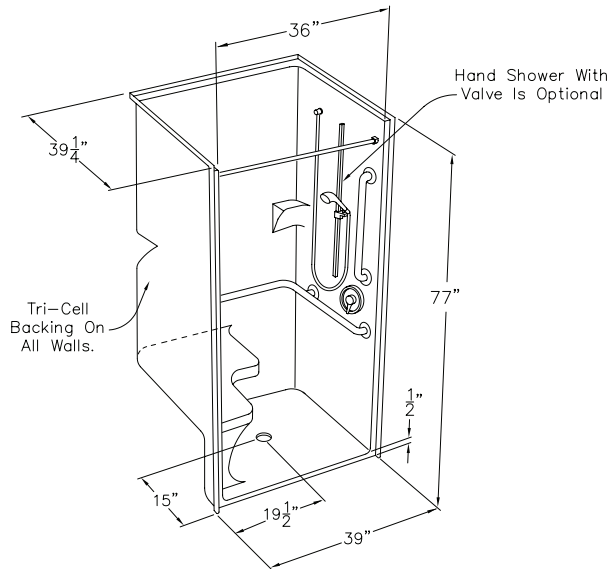
CD Technical Data Sheet

COMMERCIAL ACCESSIBLE

3600BF MS

OD 39" x 39.25" x 77" ID 36" x 36" center point

COMFORT PACKAGE 3600BF MS-I shown in drawing



STANDARD FEATURES

Barrier-free threshold

Solid Surface finish- 30 year limited warranty or

AcrylX™ finish- 30 year limited warranty

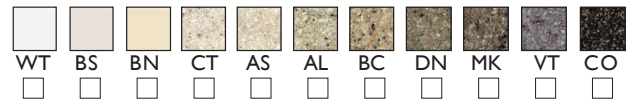
GripSure textured floor

NOTICE OF LIMITATION

Unit must be properly leveled to insure maximum drainage

ACCESSIBLE
Enhancing Livable Design

FINISH COLOR SELECTION (Check One)



SOLID SURFACE: WT-white, BN-bone, BS-biscuit, CT-cotton seed, AS-ashley, AL-almond, BC-beach, DN-dune, MK-mink, VT-violet, CO-coco

ACRYLX™: WT-white, BN-bone, BS-biscuit

ACCESSIBLE PACKAGES (Check One)

Includes standard features plus Tri-Cell honeycomb wall construction, Pre-leveled EasyBase™, and all accessories detailed below.

☐ SOLID SURFACE COMFORT PACKAGE

SSS3600BF MS-I

stainless steel L-bar configuration, integral L-seat,

stainless steel curtain rod, 1/2" threshold

☐ ACRYLX™ COMFORT PACKAGE

XSS3600BF MS-I

white L-bar configuration, integral L-seat,

white curtain rod, 1/2" threshold

BUILD TO ORDER BASE MODELS (Check One)

Standard features only. All additional options must be selected from modify package options list.

☐ SOLID SURFACE BASE MODEL

SSS3600BF MS

☐ ACRYLX™ BASE MODEL

XSS3600BF MS

MODIFY PACKAGE OPTIONS

After selecting base model or prepackaged model, select modify package options to add or change options. Add nomenclature in bold to prepackaged model number. Example: MODEL#-I-PB for pressure balancing mixing valve option.

WALL REINFORCEMENT

☐ TC Tri-Cell honeycomb

☐ FWB Full wood backing

☐ FBP Future placement for bars/seats

L-BAR CONFIGURATION

☐ LW ComfortCare™ 1.25 white

☐ CLS ComfortCare™ 1.25 stainless

☐ LS Stainless 1.50

VERTICAL GRAB BAR

☐ VW ComfortCare™ 24" white

☐ CVS ComfortCare™ 24" steel

☐ VS Stainless 24" X 1.50

L SHAPED FOLD-UP SEAT

☐ PD Padded white

☐ HD HDPE white

☐ PH Phenolic woodgrain

CURTAIN ROD

☐ CRW Curtain rod/cups white

☐ CRS Curtain rod/cups stainless steel

CURTAIN

☐ CPW Polyester weighted white

☐ CVW Vinyl weighted white

VALVE & SHOWER ASSEMBLY

☐ PB Pressure balancing mixing valve (ADA/ANSI)

☐ HH Hand held shower assembly with slide bar, vacuum breaker and 60" hose (ADA/ANSI)

WATER DAM

☐ CD Collapsible dam white

BASE REINFORCEMENT

☐ EZB Pre-leveled EasyBase™

THRESHOLD

☐ BF75 3/4" barrier free

☐ BF2 2" barrier free

DRAIN

☐ DR Drain no caulk brass

☐ SEMI Semi-permanent dam

P3

*not available on solid surface models

☐ P3 P3 Armorshield

ANTIMICROBIAL

☐ SS SmartSilver

TRIM

☐ TK Trim Kit

cd
comfortdesigns

comfortdesignsbathware.com | 800.443.7269