

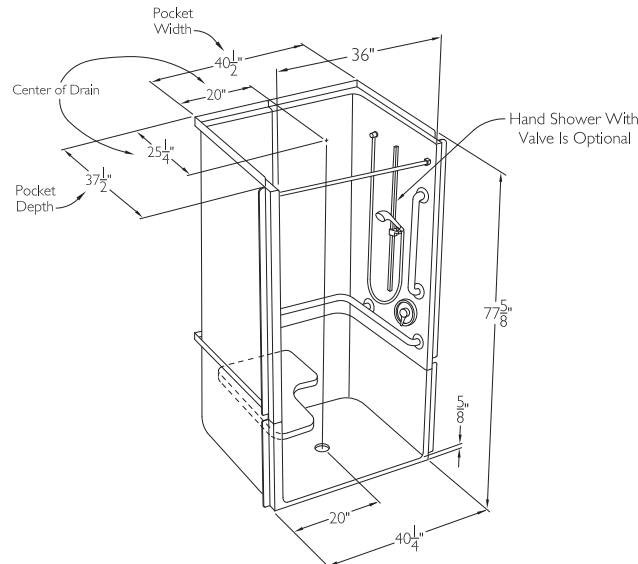
CD Product Sheet

COMMERCIAL CODE COMPLIANT

3637BF 3P RRF

OD 40.25" x 38.5" x 77.675" ID 36" x 36" center point

COMFORT PACKAGE 3637BF 3P RRF-I shown in drawing



STANDARD FEATURES

Barrier free design with steel reinforcement
Solid Surface finish- 30 year limited warranty or
AcrylX™ finish- 30 year limited warranty
GripSure textured floor

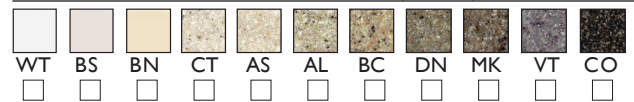
NOTICE OF LIMITATION

Recess as needed to meet code

Adhere to floor as required

NOTE: For ADA/ANSI compliance, selection for L shaped bar, seat and pressure balancing mixing valve, hand-held shower with slide bar, vacuum breaker and 60" hose must be selected and installed per ADA/ANSI guidelines.

FINISH COLOR SELECTION (Check One)



SOLID SURFACE: WT-white, BN-bone, BS-biscuit, CT-cotton seed, AS-ashley, AL-almond, BC-beach, DN-dune, MK-mink, VT-violet, CO-coco

ACRYLX™: WT-white, BN-bone, BS-biscuit

ADA/ANSI COMPLIANT PACKAGES (Check One)

Includes standard features plus Tri-Cell honeycomb wall construction, Pre-leveled EasyBase™, L-bar configuration, L-seat, curtain rod installed per ADA/ANSI.

*NOTE: Plumbing is not included in comfort package. To add plumbing use modify package options below and select valve and shower assembly.

☐ SOLID SURFACE COMFORT PACKAGE

SSS3637BF 3P RRF-I

stainless steel L-bar configuration, woodgrain L-seat,
stainless steel curtain rod, 1/2" threshold, return
receiver flange left and right

☐ ACRYLX™ COMFORT PACKAGE

XSS3637BF 3P RRF-I

white L-bar configuration, white HDPE
L-seat, white curtain rod, 1/2" threshold,
return receiver flange left and right

BUILD TO ORDER BASE MODELS (Check One)

Standard features only. All additional options must be selected from modify package options list.

☐ SOLID SURFACE BASE MODEL

SSS3637BF 3P RRF

☐ ACRYLX™ BASE MODEL

XSS3637BF 3P RRF

MODIFY PACKAGE OPTIONS

After selecting base model or prepackaged model, select modify package options to add or change options. Add nomenclature in bold to prepackaged model number. Example: MODEL#-I-PB for pressure balancing mixing valve option.

WALL REINFORCEMENT

☐ TC Tri-Cell honeycomb

☐ FWB Full wood backing

☐ FBP Future placement for bars/seats

L-BAR CONFIGURATION

☐ LW ComfortCare™ 1.25 white

☐ CLS ComfortCare™ 1.25 stainless

☐ LS Stainless 1.50

VERTICAL GRAB BAR

☐ VW ComfortCare™ 24" white

☐ CVS ComfortCare™ 24" steel

☐ VS Stainless 24" X 1.50

L SHAPED FOLD-UP SEAT

☐ PD Padded white

☐ HD HDPE white

☐ PH Phenolic woodgrain

CURTAIN ROD

☐ CRW Curtain rod/cups white

☐ CRS Curtain rod/cups stainless steel

CURTAIN

☐ CPW Polyester weighted white

☐ CVW Vinyl weighted white

VALVE & SHOWER ASSEMBLY

☐ PB Pressure balancing
mixing valve (ADA/ANSI)

☐ HH Hand held shower assembly with slide bar,
vacuum breaker and 60" hose (ADA/ANSI)

WATER DAM

☐ CD Collapsible dam white

BASE REINFORCEMENT

☐ EZB Pre-leveled EasyBase™

THRESHOLD

☐ BF5 1/2" barrier free

☐ BF2 2" barrier free

DRAIN

☐ DR Drain no caulk brass

P3

☐ P3 P3 Armorshield

*not available on solid surface models

ANTIMICROBIAL

☐ SS SmartSilver

TRIM

☐ TK Trim Kit

cd
comfortdesigns

comfortdesignsbathware.com | 800.443.7269

CODE COMPLIANT
Enhancing Livable Design