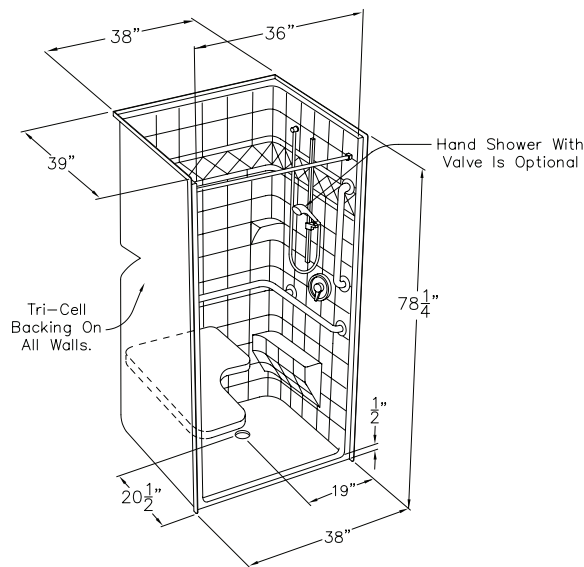


CD Product Sheet

COMMERCIAL CODE COMPLIANT

3838BF

OD 38" x 38" x 78.25" ID 36" x 36" center point
COMFORT PACKAGE 3838BF-I shown in drawing



STANDARD FEATURES

Barrier free design with steel reinforcement
Solid Surface finish- 30 year limited warranty or
AcrylX™ finish- 30 year limited warranty
GripSure textured floor

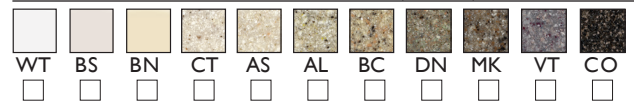
NOTICE OF LIMITATION

Recess as needed to meet code

Adhere to floor as required

NOTE: For ADA/ANSI compliance, selection for L shaped bar, seat and pressure balancing mixing valve, hand-held shower with slide bar, vacuum breaker and 60" hose must be selected and installed per ADA/ANSI guidelines.

FINISH COLOR SELECTION (Check One)



SOLID SURFACE: WT-white, BN-bone, BS-biscuit, CT-cotton seed, AS-ashley, AL-almond, BC-beach, DN-dune, MK-mink, VT-violet, CO-coco
ACRYLX™: WT-white, BN-bone, BS-biscuit

ADA/ANSI COMPLIANT PACKAGES (Check One)

Includes standard features plus Tri-Cell honeycomb wall construction, Pre-leveled EasyBase™, L-bar configuration, L-seat, curtain rod installed per ADA/ANSI.
*NOTE: Plumbing is not included in comfort package. To add plumbing use modify package options below and select valve and shower assembly.

☐ SOLID SURFACE COMFORT PACKAGE

SST3838BF-I

stainless steel L-bar configuration, woodgrain L-seat,
stainless steel curtain rod, 1/2" threshold

☐ ACRYLX™ COMFORT PACKAGE

XST3838BF-I

white L-bar configuration, white HDPE
L-seat, white curtain rod, 1/2" threshold

BUILD TO ORDER BASE MODELS (Check One)

Standard features only. All additional options must be selected from modify package options list.

☐ SOLID SURFACE BASE MODEL

SST3838BF

☐ ACRYLX™ BASE MODEL

XST3838BF

MODIFY PACKAGE OPTIONS

After selecting base model or prepackaged model, select modify package options to add or change options. Add nomenclature in bold to prepackaged model number. Example: MODEL#-I-PB for pressure balancing mixing valve option.

WALL REINFORCEMENT	<input type="checkbox"/> TC Tri-Cell honeycomb	<input type="checkbox"/> FWB Full wood backing
	<input type="checkbox"/> FBP Future placement for bars/seats	
L-BAR CONFIGURATION	<input type="checkbox"/> LW ComfortCare™ 1.25 white	<input type="checkbox"/> CLS ComfortCare™ 1.25 stainless
VERTICAL GRAB BAR	<input type="checkbox"/> VW ComfortCare™ 24" white	<input type="checkbox"/> CVS ComfortCare™ 24" steel
L SHAPED FOLD-UP SEAT	<input type="checkbox"/> PD Padded white	<input type="checkbox"/> HD HDPE white
CURTAIN ROD	<input type="checkbox"/> CRW Curtain rod/cups white	<input type="checkbox"/> CRS Curtain rod/cups stainless steel
CURTAIN	<input type="checkbox"/> CPW Polyester weighted white	<input type="checkbox"/> CVW Vinyl weighted white
VALVE & SHOWER ASSEMBLY	<input type="checkbox"/> PB Pressure balancing mixing valve (ADA/ANSI)	<input type="checkbox"/> HH Hand held shower assembly with slide bar, vacuum breaker and 60" hose (ADA/ANSI)
WATER DAM	<input type="checkbox"/> CD Collapsible dam white	
BASE REINFORCEMENT	<input type="checkbox"/> EZB Pre-leveled EasyBase™	
THRESHOLD	<input type="checkbox"/> BF5 1/2" barrier free	<input type="checkbox"/> BF2 2" barrier free
DRAIN	<input type="checkbox"/> DR Drain no caulk brass	
P3	<input type="checkbox"/> P3 P3 Armorshield	
<small>*not available on solid surface models</small>		
ANTIMICROBIAL	<input type="checkbox"/> SS SmartSilver	
TRIM	<input type="checkbox"/> TK Trim Kit	

cd
comfortdesigns

comfortdesignsbathware.com | 800.443.7269

CODE COMPLIANT
Enhancing Livable Design