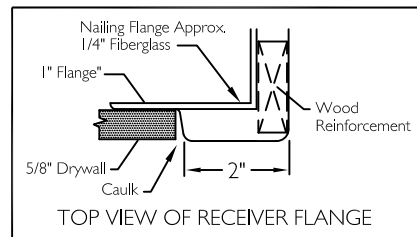
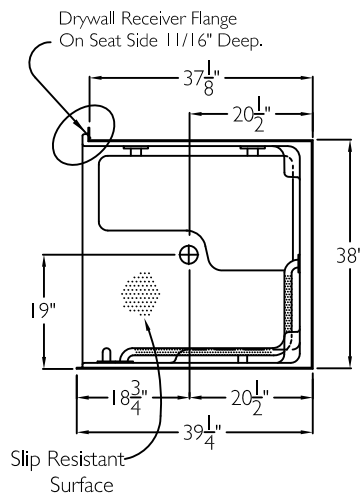
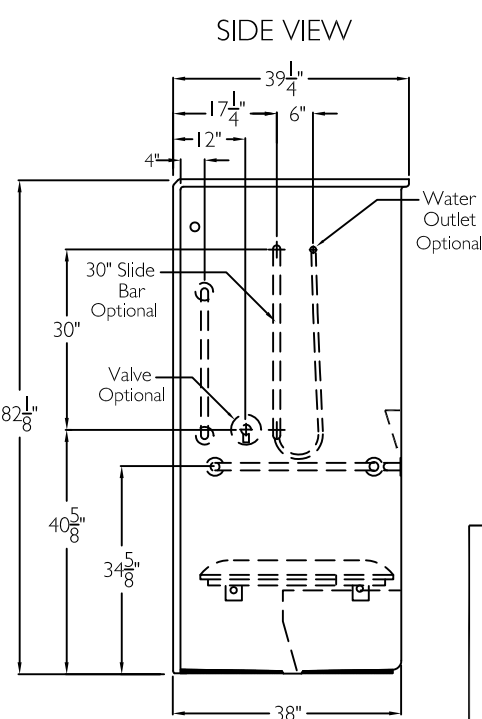
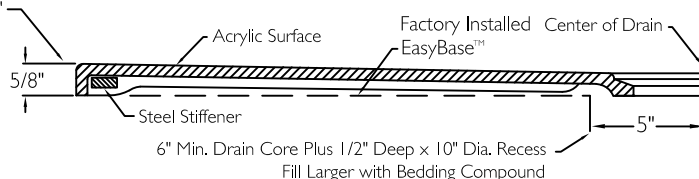


**TOP VIEW**



Coordinate Finished Floor Height For Code. Finished Floor May Be No More Than 1/4" Below The Top Of Compartment Threshold.

**CROSS SECTION OF THRESHOLD**



## SUBMITTAL

This shower enclosure shall be model XST 3938 BF .625 RRF left, or right. Finished surface shall be of a sanitary grade applied acrylic. The base shall be attached to the sump in such manner to form an integral part with an inner and outer coating of polyester resin. Unit construction shall be of a molded reinforced fiberglass with a 15% minimum fiberglass content.

The unit shall have outside dimensions of 40" x 39 1/4" x 82 1/8". The unit shall meet CSA B45.5-11, HUD-UM73, ADA, ANSI A117.1, MAS, and Home Innovation Research Lab.

## HANDED BY THE VALVE

The enclosure shall be equipped with the following accessories:

- 1) One 18" x 33 1/2" x 1 1/4" diameter 18 gauge white textured horizontal L-grab bar,
- 2) One 24" x 1 1/4" diameter white textured grab bar vertical on the valve wall, both with 1 1/2" statute clearance, secured from the rear with stainless steel bolts, and 3" x 3" x 11 gauge metal mounting plate,
- 3) 32" x 21" frameless white padded fold up seat,
- 4) Molded corner soap ledges,
- 5) Molded leg ledge on valve wall,
- 6) Molded recessed receiver flange on seat side,
- 7) One inch diameter white curtain rod with receiver cups,
- 8) Tile pattern,
- 9) Tri-Cell backing,
- 10) Factory installed Easy Base self sustaining bottom,
- 11) 5/8" threshold.

### OPTIONAL ACCESSORIES:

Factory Plumbing Install Option: ☐ YES ☐ NO

☐ PB Pressure Balancing Mixing Valve (ADA / ANSI MAS)

☐ HH Hand held shower assembly with slide bar, vacuum breaker and 60" hose (ADA / ANSI MAS)

THIS UNIT FEATURES THE OUTSIDE DIMENSION OF 40" OF OVERALL WIDTH. THIS DOES NOT ALLOW FOR FULL ENCLOSURE OF THE BOLTS AND NUTS USED TO SECURE THE BARS AND SEAT IN PLACE. THE BOLT AND NUT COMBINATION SHOULD NOT PROTRUDE MORE THAN 3/4" ON EITHER SIDE OF THE SHOWER WALLS. THIS MAY REQUIRE THE NEED TO NOTCH STUDS TO ALLOW BOLT CLEARANCE FOR A DRYWALL ENCLOSED FIRE WALL INSTALLATION. ADJUSTMENT OF THE WALL BOARD MAY BE NECESSARY TO PROVIDE CLEARANCE OF THE BOLT(S) WHILE MAINTAINING THE INTEGRITY OF THE DRYWALL ENCLOSED FIRE WALL ENCLOSURE.

NOTE: THIS UNIT WILL NOT ACCEPT A DOOR.

Job Name	Approved By Print Name	Date	COMFORT DESIGNS	
Project No	Approved By Signature		Model NAXST 3938 BF .625-I MAS	
Comfort Designs 435 Industrial Road Savannah, TN 38372 tel 800.443.7269 fax 731.925.4290 www.comfortdesignsbathware.com	Architect		Drawing No. XST 3938 BF .625 WTLB WTVB FPD WCR Tri-Cell Easy Base	
	Engineer		Date Issued, 9-24-12 Drawing Rev. 11-17-16	
	Rep		Material Acrylic Surface	
	Wholesaler		Color.	
	Comments		Dimensions are in inches. Due to the nature of the materials dimensions may vary ± 1/2"	