

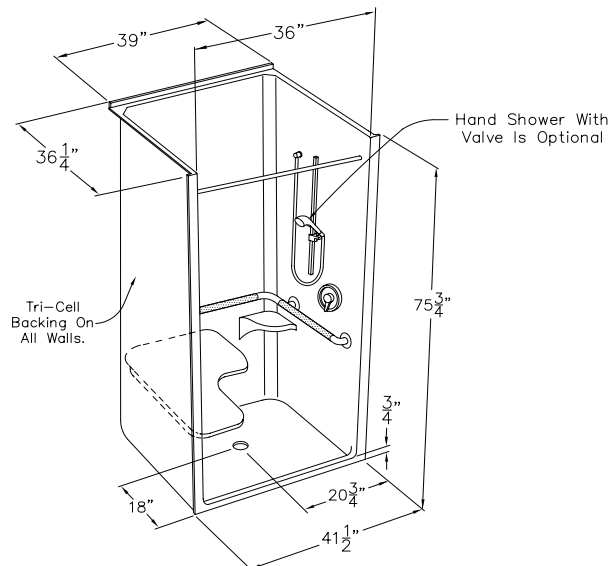
# CD Product Sheet

## COMMERCIAL CODE COMPLIANT

### 4136BF OT MAS

OD 41.25" x 37.5" x 76.875" ID 36" x 36" center point

COMFORT PACKAGE 4136BF OT-I shown in drawing



#### STANDARD FEATURES

Barrier free design with steel reinforcement  
Acrylic finish- 5 year limited warranty  
GripSure textured floor

#### NOTICE OF LIMITATION

Recess as needed to meet code

Adhere to floor as required

NOTE: For MAS compliance, selection for peened bar, padded seat and pressure balancing mixing valve, hand-held shower with slide bar, vacuum breaker and 60" hose must be selected and installed per MAS guidelines.

#### FINISH COLOR SELECTION (Check One)



ACRYLIC: WT-white, BN-bone, BS-biscuit

**MAS COMPLIANT**  
Enhancing Livable Design

#### MAS COMPLIANT PACKAGES (Check One)

Includes standard features plus Tri-Cell honeycomb wall construction, Pre-leveled EasyBase™, peened bar configuration, padded seat, curtain rod installed per MAS. \*NOTE: Plumbing is not included in comfort package. To add plumbing use modify package options below and select valve and shower assembly.

##### ☐ ACRYLIC COMFORT PACKAGE

XSA4136BF OT-I

white L-bar configuration, white padded L-seat, white curtain rod, 7/8" threshold

#### BUILD TO ORDER BASE MODELS (Check One)

Standard features only. All additional options must be selected from modify package options list.

##### ☐ ACRYLIC BASE MODEL

XSA4136BF OT

#### MODIFY PACKAGE OPTIONS

After selecting base model or prepackaged model, select modify package options to add or change options. Add nomenclature in bold to prepackaged model number. Example: MODEL#-I-PB for pressure balancing mixing valve option.

- |   |   |   |
|---|---|---|
| <b>WALL REINFORCEMENT</b>                             | <input type="checkbox"/> <b>TC</b> Tri-Cell honeycomb                         | <input type="checkbox"/> <b>FWB</b> Full wood backing   |
|   | <input type="checkbox"/> <b>FBP</b> Future placement for bars/seats           |   |
| <b>L-BAR CONFIGURATION</b>                            | <input type="checkbox"/> <b>LW</b> ComfortCare™ 1.25 txt white                | <input type="checkbox"/> <b>CLS</b> ComfortCare™ 1.25 peened stainless  |
| <b>VERTICAL GRAB BAR</b>                              | <input type="checkbox"/> <b>VW</b> ComfortCare™ 24" white                     | <input type="checkbox"/> <b>CVS</b> ComfortCare™ 24" steel  |
| <b>L SHAPED FOLD-UP SEAT</b>                          | <input type="checkbox"/> <b>PD</b> Padded white                               |   |
| <b>CURTAIN ROD</b>                                    | <input type="checkbox"/> <b>CRW</b> Curtain rod/cups white                    | <input type="checkbox"/> <b>CRS</b> Curtain rod/cups stainless steel  |
| <b>CURTAIN</b>  | <input type="checkbox"/> <b>CPW</b> Polyester weighted white                  | <input type="checkbox"/> <b>CVW</b> Vinyl weighted white  |
| <b>VALVE &amp; SHOWER ASSEMBLY</b>                    | <input type="checkbox"/> <b>PB</b> Pressure balancing mixing valve (ADA/ANSI) | <input type="checkbox"/> <b>HH</b> Hand held shower assembly with slide bar, vacuum breaker and 60" hose (ADA/ANSI) |
| <b>WATER DAM</b>                                      | <input type="checkbox"/> <b>CD</b> Collapsible dam w/white                    |   |
| <b>BASE REINFORCEMENT</b>                             | <input type="checkbox"/> <b>EZB</b> Pre-leveled EasyBase™                     |   |
| <b>THRESHOLD</b>                                      | <input type="checkbox"/> <b>BF75</b> 3/4" barrier free                        | <input type="checkbox"/> <b>BF2</b> 2" barrier free   |
| <b>DRAIN</b>  | <input type="checkbox"/> <b>DR</b> Drain no caulk brass                       |   |
| <b>P3</b>   | <input type="checkbox"/> <b>P3</b> P3 Armorshield                             |   |
| <small>*not available on solid surface models</small> |   |   |
| <b>TRIM</b>   | <input type="checkbox"/> <b>TK</b> Trim Kit                                   |   |

**cd**  
comfortdesigns

comfortdesignsbathware.com | 800.443.7269