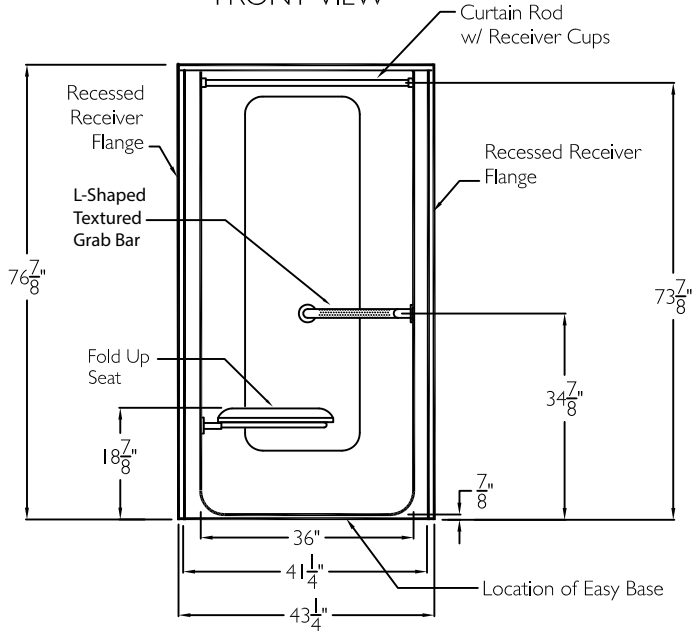
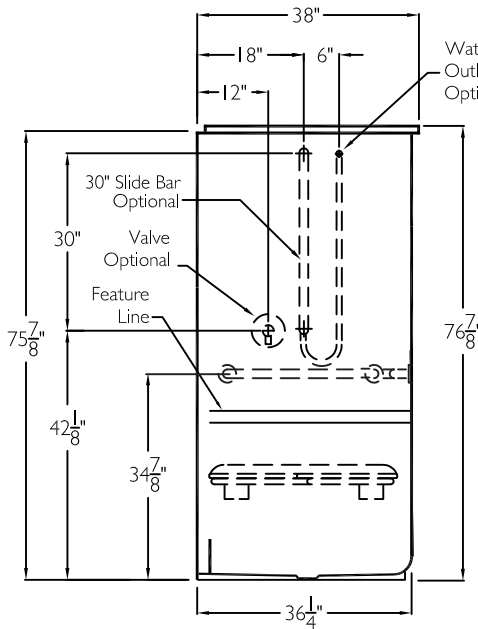


FRONT VIEW

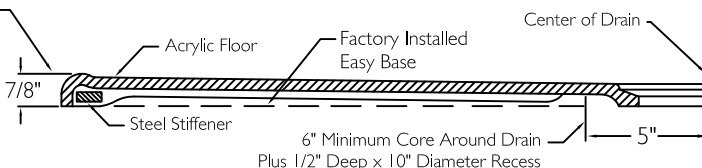


SIDE VIEW

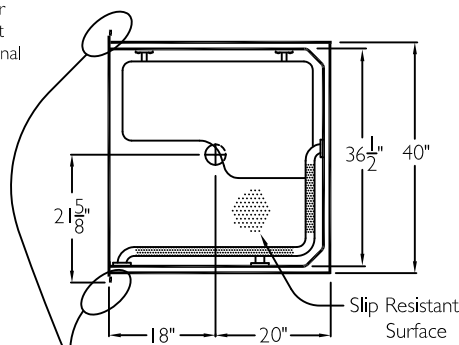


CROSS SECTION OF THRESHOLD

Coordinate Finished Floor Height For Code. Finished Floor May Be No More Than 1/4" Below The Top Of Compartment Threshold.



TOP VIEW



Recessed edge along both sides provide a pocket so drywall may be installed flush with the front of the shower stall.

MOLDED RECESSED RECEIVER FLANGE BOTH SIDES

SUBMITTAL

This shower enclosure shall be model XSA 4136 BF OT .875 right, or left. Finished surface shall be of a sanitary grade acrylic exhibiting a minimal thickness of 15 dry mills and a finished cured Barcol hardness of 80-90 as tested with ASTM D-2583. Unit construction shall be of a molded reinforced fiberglass with a 15% minimum fiberglass content.

The unit shall have outside dimensions of 43 1/4" x 38" x 76 7/8".

The unit shall meet CSA B45.5, IAPMO Z124, MAS, ADA, HUD, BOCA, Home Inovaton Research Lab, UPC, and shall meet the requirements of the Southern Building Code.

HANDED BY THE VALVE.

The enclosure shall be equipped with the following accessories:

- 1) one 18" x 32 1/2" x 1 1/4" diameter white textured grab bar, with 1 1/2" clearance statute, mounted with stainless steel bolts secured from the rear with 3" x 3", 11 gauge metal backing plates,
- 2) one inch diameter, 18 gauge white curtain rod, with receiver cups,
- 3) Frameless 32" x 21" padded fold up seat,
- 4) Tri-Cell backing,
- 5) Smooth walls with feature line,
- 6) molded recessed receiver flange on both sides,
- 7) Top perimeter flange,
- 8) Factory installed Easy Base self sustaining bottom,
- 9) 7/8" threshold.

OPTIONAL ACCESSORIES:

- Factory Plumbing Install Option: ☐ YES ☐ NO
- Plumbing location: ☐ End wall ☐ Center back wall
- ☐ PB Pressure Balancing Mixing Valve (ADA / ANSI)
- ☐ HH Hand held shower assembly with slide bar, vacuum breaker and 60" hose (ADA / ANSI)

THIS UNIT FEATURES THE OUTSIDE DIMENSION OF 40" OF OVERALL WIDTH. THIS DOES NOT ALLOW FOR FULL ENCLOSURE OF THE BOLTS AND NUTS USED TO SECURE THE BARS AND SEAT IN PLACE. THE BOLT AND NUT COMBINATION SHOULD NOT PROTRUDE MORE THAN 3/4" ON EITHER SIDE OF THE SHOWER WALLS. THIS MAY REQUIRE THE NEED TO NOTCH STUDS TO ALLOW BOLT CLEARANCE FOR A DRYWALL ENCLOSED FIRE WALL INSTALLATION. ADJUSTMENT OF THE WALL BOARD MAY BE NECESSARY TO PROVIDE CLEARANCE OF THE BOLT(S) WHILE MAINTAINING THE INTEGRITY OF THE DRYWALL ENCLOSED FIRE WALL ENCLOSURE.

NOTE: THIS UNIT WILL NOT ACCEPT A DOOR.

Job Name	Approved By Print Name	Date	COMFORT DESIGNS	
Project No	Approved By Signature		Model No. XSA 4136 BF OT .875	
Comfort Designs 435 Industrial Road Savannah, TN 38372 tel 800.443.7269 fax 731.925.4290 www.comfortdesignsbathware.com	Architect		Drawing No. XSA 4136 BF OT .875 WLB FPD WCR RF TC Easy Base Smooth	
	Engineer		Date Issued. 4-3-12	Drawing Rev. 10-21-15
	Rep		Material. Acrylic	
	Wholesaler		Color.	
	Comments		Dimensions are in inches. Due to the nature of the materials dimensions may vary $\pm 1/2"$	