

CD Technical Data Sheet

COMMERCIAL CODE COMPLIANT

XSA4I36BF OT

ADA/ANSI code compliant

NOTE: For ADA/ANSI compliance, pressure balancing mixing valve, hand-held shower with slide bar, vacuum breaker and 60" hose must be installed per ADA/ANSI guidelines.

TECHNICAL INFORMATION

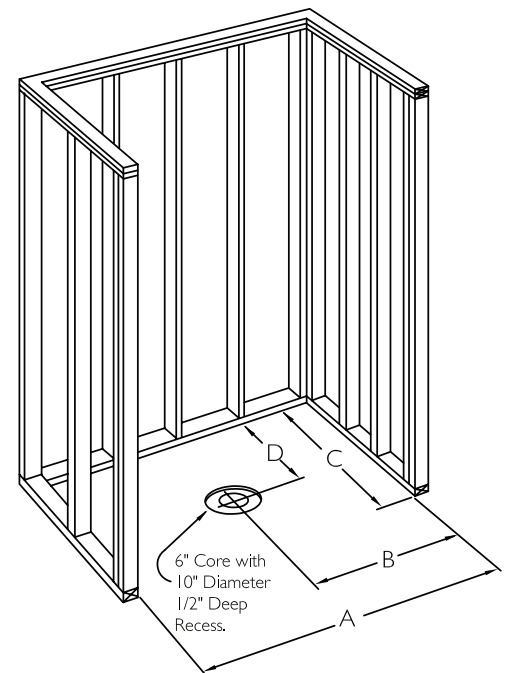
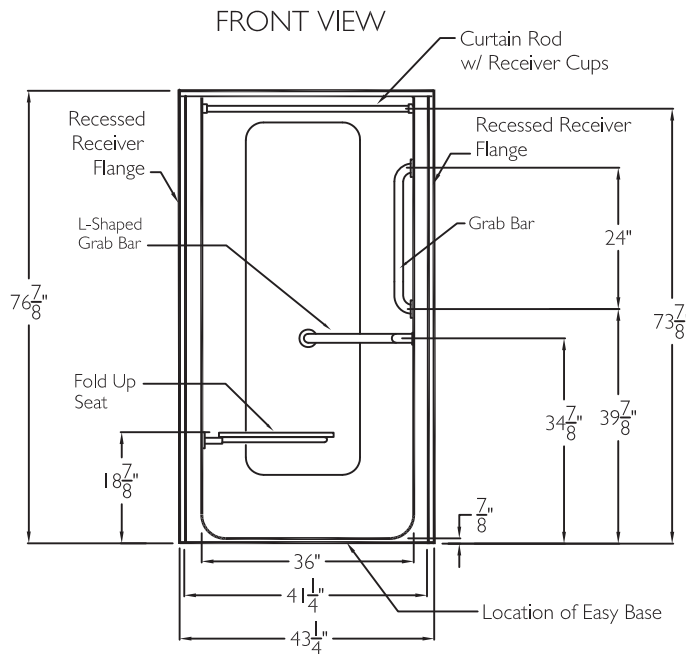
OD 41.25" x 38" x 76.875"

ID 36" x 36" center point

LOAD FACTOR 1.06

HANDED BY Valve Wall

CODE COMPLIANT
Enhancing Livable Design

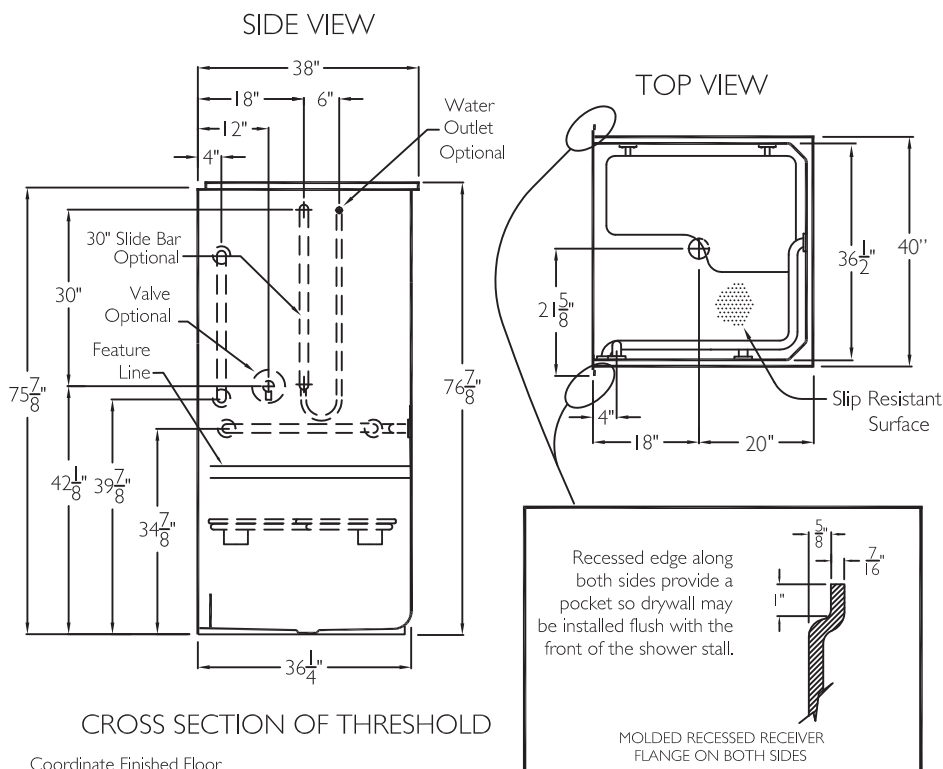


FRAMING DIMENSIONS

A 40"	B 19.875"
C 38"	D 20"

ADDITIONAL CODES

ICC/ANSI A117.1, ANSI Z124.2, ADAAG, BOCA, NAHB, UPC, Southern Building Code



Coordinate Finished Floor Height For Code. Finished Floor May Be No More Than 1/4" Below The Top Of Compartment Threshold.

cd
comfortdesigns

comfortdesignsbathware.com | 800.443.7269