

SUBMITTAL

This shower enclosure shall be model XSS 3260 TS, Finished surface shall be of a sanitary grade applied acrylic. The base shall be attached to the sump in such manner to form an integral part with an inner and outer coating of polyester resin. Unit construction shall be of a molded reinforced fiberglass with a 15% minimum fiberglass content.

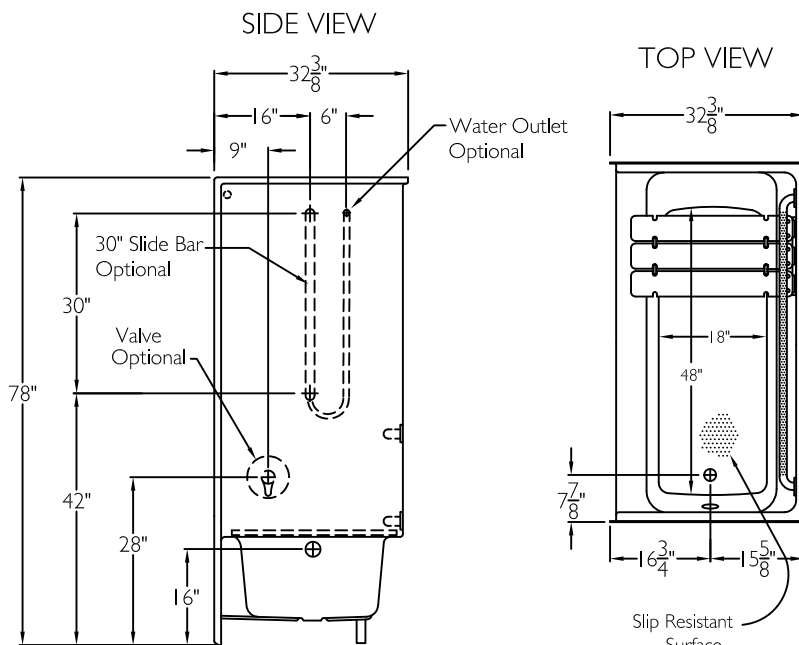
The unit shall have outside dimensions of 60" x 32 3/8" x 78".

The unit shall meet CSA B45.5-I I, HUD-UM73, MAS, and Home Innovation Research Lab.

HANDED BY THE VALVE

The enclosure shall be equipped with the following accessories:

- 1) Two 48" x 1 1/4" diameter white textured grab bars horizontal on the back wall, with 1 1/2" statute clearance, secured from the rear with stainless steel bolts, and 3" x 3" x 11 gauge metal mounting plates,
- 2) 28" x 15" white removable seat,
- 3) One inch diameter white curtain rod with receiver cups,
- 4) Molded soap ledges on the back wall,
- 5) Tri-Cell backing on walls.



OPTIONAL ACCESSORIES:

Factory Plumbing Install Option: ☐ YES ☐ NO

☐ PB Pressure Balancing Mixing Valve (MAS)

☐ HH Hand held shower assembly with slide bar, vacuum breaker and 60" hose (MAS)

THIS UNIT FEATURES THE OUTSIDE DIMENSION OF 60" OF OVERALL WIDTH. THIS DOES NOT ALLOW FOR FULL ENCLOSURE OF THE BOLTS AND NUTS USED TO SECURE THE BARS AND SEAT IN PLACE. THE BOLT AND NUT COMBINATION SHOULD NOT PROTRUDE MORE THAN 3/4" ON EITHER SIDE OF THE TUB SHOWER WALLS. THIS MAY REQUIRE THE NEED TO NOTCH STUDS TO ALLOW BOLT CLEARANCE FOR A DRYWALL ENCLOSED FIRE WALL INSTALLATION. ADJUSTMENT OF THE WALL BOARD MAY BE NECESSARY TO PROVIDE CLEARANCE OF THE BOLT(S) WHILE MAINTAINING THE INTEGRITY OF THE DRYWALL ENCLOSED FIRE WALL ENCLOSURE.

NOTE: THIS UNIT WILL NOT ACCEPT A DOOR.

Job Name	Approved By Print Name		Date	COMFORT DESIGNS	
Project No	Approved By Signature			Model No. XSS 3260 TS MAS-I	
Comfort Designs 435 Industrial Road Savannah, TN 38372 tel 800.443.7269 fax 731.925.4290 www.comfortdesignsbathware.com	Architect			Drawing No. XSS 3260 TS 2-White Textured Grab Bars RS WCR Tri-Cell	
	Engineer			Date Issued, 3-30-12	
	Rep			Drawing Rev. 11-18-16	
	Wholesaler			Material, Acrylic Surface	
	Comments				Color.
				Dimensions are in inches. Due to the nature of the materials dimensions may vary ± 1/2"	