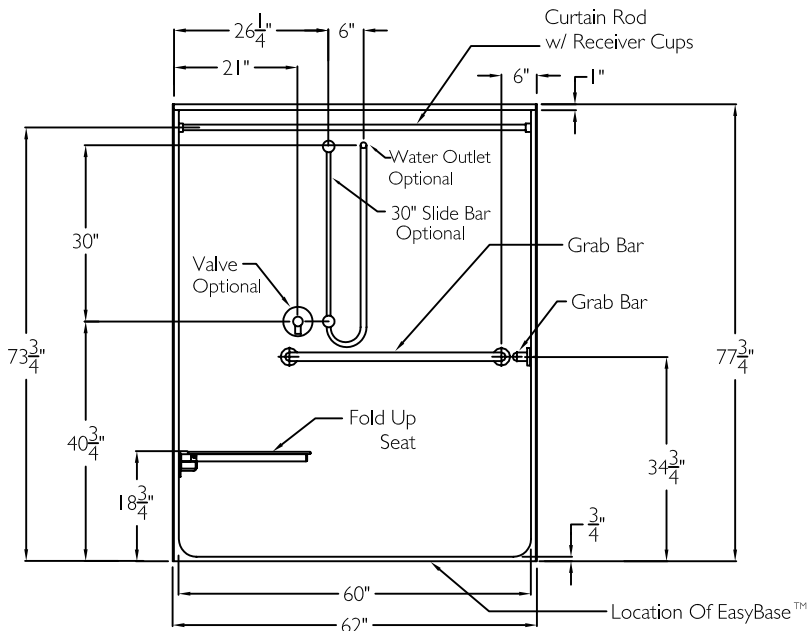
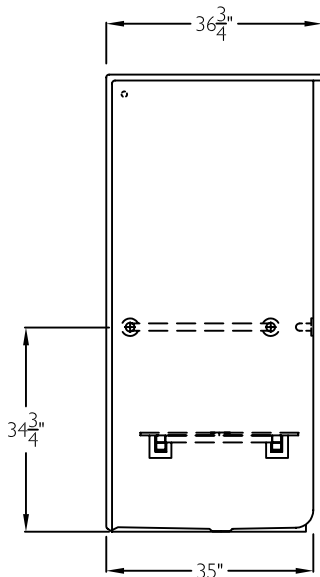


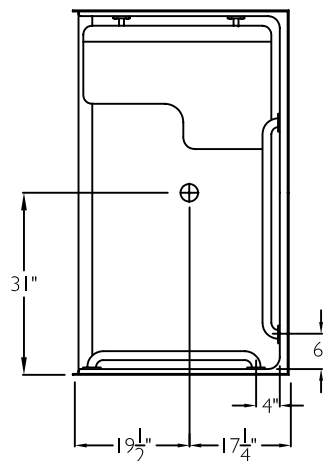
## FRONT VIEW



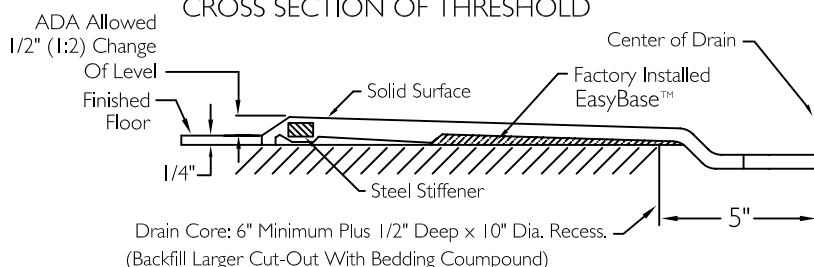
## SIDE VIEW



## TOP VIEW



## CROSS SECTION OF THRESHOLD



## SUBMITTAL

This shower enclosure shall be model SSS 6237 BF, right, or left. Finished surface shall be of a sanitary grade solid surface exhibiting a minimal thickness of 55 dry mils and a finished cured Barcoal hardness of 80-90 as tested with ASTM D-2583. Unit construction shall be of a molded reinforced fiberglass with a 15% minimum fiberglass content.

The unit shall have outside dimensions of 62" x 36 3/4" x 77 3/4". The unit shall meet CSA B45.5-11, HUD, BOCA, NAHB, IAPMOZ124-2011, ADA, ANSI A117.1-2003, and shall meet the requirements of the Southern Building Code.

HANDED BY THE SEAT.

The enclosure shall be equipped with the following accessories:

- 1) one 36" x 1 1/4" diameter 18 gauge white grab bar on the back wall,
- 2) one 28" x 1 1/4" diameter 18 gauge white grab on the side wall, both with 1 1/2" statute clearance, secured from the rear with stainless steel bolts, and 3" x 3" x 11 gauge metal mounting plates,
- 3) 32" x 21" wood grain phenolic fold up seat,
- 4) Tri-Cell backing on walls,
- 5) one inch diameter, 18 gauge white curtain rod with receiver cups,
- 6) factory installed EasyBase™ self sustaining bottom,
- 7) 3/4" Change Of Level threshold.

### OPTIONAL ACCESSORIES:

Factory Plumbing Install Option: ☐ YES ☐ NO

☐ PB Pressure Balancing Mixing Valve (ADA / ANSI)

☐ HH Hand held shower assembly with slide bar, vacuum breaker and 60" hose (ADA / ANSI)

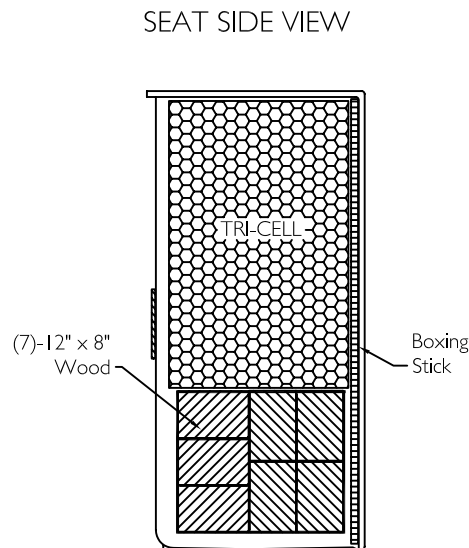
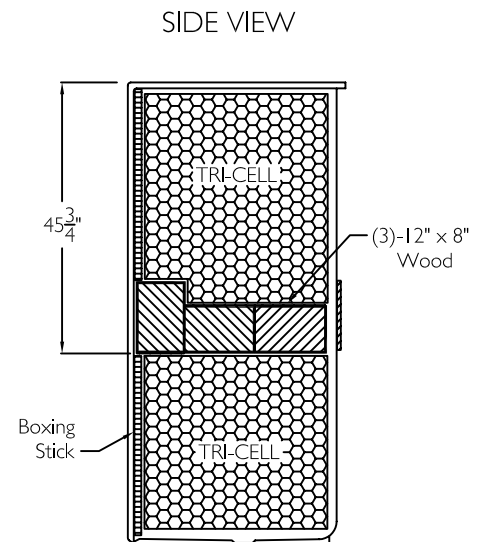
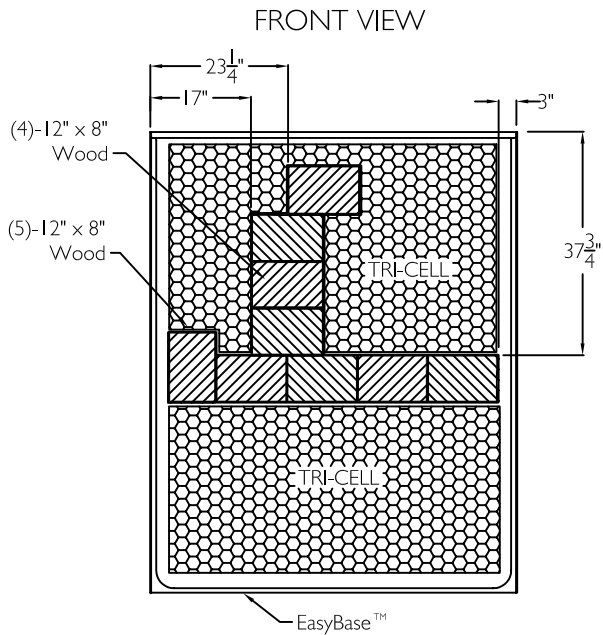
THIS UNIT FEATURES THE OUTSIDE DIMENSION OF 62" OF OVERALL WIDTH. THIS DOES NOT ALLOW FOR FULL ENCLOSURE OF THE BOLTS AND NUTS USED TO SECURE THE BARS AND SEAT IN PLACE. THE BOLT AND NUT COMBINATION SHOULD NOT PROTRUDE MORE THAN 3/4" ON EITHER SIDE OF THE SHOWER WALLS. THIS MAY REQUIRE THE NEED TO NOTCH STUDS TO ALLOW BOLT CLEARANCE FOR A DRYWALL ENCLOSED FIRE WALL INSTALLATION. ADJUSTMENT OF THE WALL BOARD MAY BE NECESSARY TO PROVIDE CLEARANCE OF THE BOLT(S) WHILE MAINTAINING THE INTEGRITY OF THE DRYWALL ENCLOSED FIRE WALL ENCLOSURE.

NOTE: THIS UNIT WILL NOT ACCEPT A DOOR.

Job Name	Approved By	Name	Date	COMFORT DESIGNS	
Project No	Architect			Model No. SSS 6237 BF COL .75	
Comfort Designs 435 Industrial Road Savannah, TN 38372 tel 800.443.7269 fax 731.925.4290 www.comfortdesignsbathware.com	Engineer			Drawing No. SSS 6237 BF COL .75 Package I ADA	
	Rep			Date Issued, 4-3-12	Drawing Rev. 2-6-13
	Wholesaler			Material. Solid Surface	
	Comments			Color,	
				Dimensions are in inches. Due to the nature of the materials dimensions may vary $\pm$ 1/2"	

## BOARD PLACEMENT

Board placement drawing: SSS 6237 BF COL



Job Name	Approved By	Name	Date	COMFORT DESIGNS	
Project No	Architect			Model No. SSS 6237 BF COL .75	
Comfort Designs 435 Industrial Road Savannah, TN 38372 tel 800.443.7269 fax 731.925.4290 www.comfortdesignsbathware.com	Engineer			Drawing No. SSS 6237 BF COL .75 Package I ADA -BP	
	Rep			Date Issued. 6-25-12	Drawing Rev. 2-6-13
	Wholesaler			Material. Solid Surface	
	Comments			Color,	
				Dimensions are in inches. Due to the nature of the materials dimensions may vary $\pm 1/2$ "	