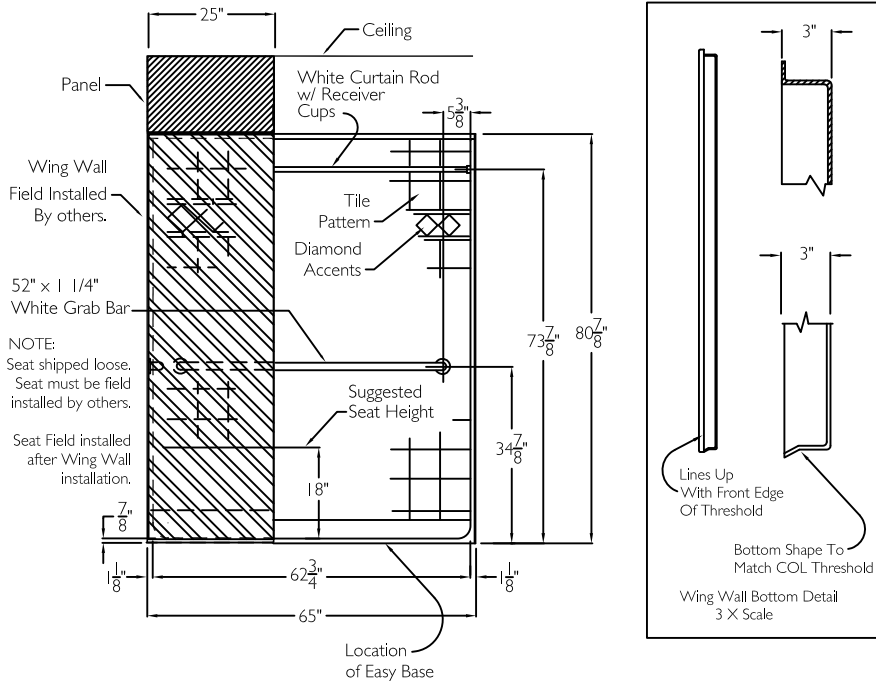
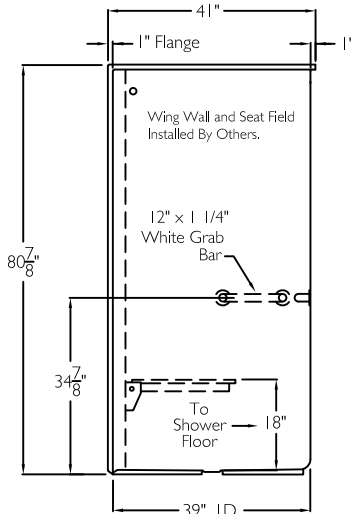


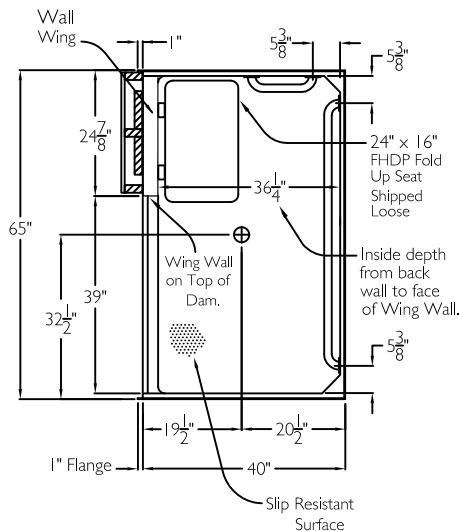
FRONT VIEW



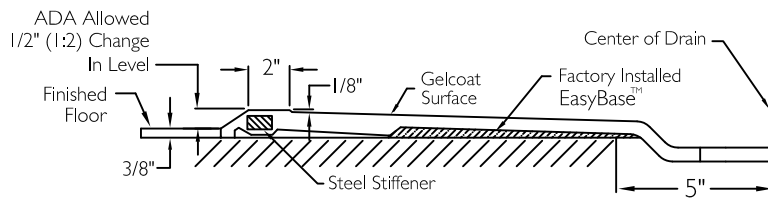
SIDE VIEW



TOP VIEW



CROSS SECTION OF THRESHOLD



SUBMITTAL

This shower enclosure shall be model XST 6542 BF .875 COL. Finished surface shall be of a sanitary grade polyester gelcoat exhibiting a minimal thickness of 15 dry mils and a finished cured Barcoal hardness of 80-90 as tested with ASTM D-2583. Unit construction shall be of a molded reinforced fiberglass with a 15% minimum fiberglass content.

The unit shall have outside dimensions of 65" x 41" x 80 7/8" (Includes Flange) and inside dimensions: 62 3/4" x 36 1/4" from shower back wall to face of wing wall, with 36" entry opening.

The unit shall meet ANSI Z124.1-2, BOCA, Home Innovation, Research Lab, UPC, HUD, FHA, CSA, ADA-2010, ANSI A117, California Building Code and the Southern Building Code.

HANDED BY THE SEAT.

The enclosure shall be equipped with the following accessories:

- 1) One 52" x 1 1/4" diameter 18 gauge white grab bar horizontal on the back wall,
- 2) One 12" x 1 1/4" diameter 18 gauge white grab bar horizontal on the side wall adjacent the seat, both with 1 1/2" statute clearance, secured from the rear with stainless steel bolts, and 3" x 3" x 11 gauge metal mounting plates,
- 3) Tile finish,
- 4) Diamond accents,
- 5) One inch diameter white curtain rod with receiver cups,
- 6) Tri cell backing,
- 7) Wing Wall, shipped loose, to be field installed by others. Wing wall is 3" deep with top and end flanges, is installed against top surface of the shower threshold, (outside framing and finishing by others)
- 8) 24" x 16" HDPE fold up seat, shipped loose, to be field installed on the wing wall by others,
- 9) Factory installed Easy Base self sustaining bottom,
- 10) 7/8" Change Of Level Threshold.

OPTIONAL ACCESSORIES:

Factory Plumbing Install Option: ☐ YES ☐ NO

☐ PB Pressure Balancing Mixing Valve May Be Required To Meet 5 lb. Maximum Operating Force For Shower Valve Lever.

☐ Fixed shower head.

☐ HH Hand held shower assembly with slide bar, vacuum breaker and 60' hose.

THIS UNIT FEATURES THE OUTSIDE DIMENSION OF 65" OF OVERALL WIDTH. THIS DOES NOT ALLOW FOR FULL ENCLOSURE OF THE BOLTS AND NUTS USED TO SECURE THE BARS AND SEAT IN PLACE. THE BOLT AND NUT COMBINATION SHOULD NOT PROTRUDE MORE THAN 3/4" ON EITHER SIDE OF THE SHOWER WALLS. THIS MAY REQUIRE THE NEED TO NOTCH STUDS TO ALLOW BOLT CLEARANCE FOR A DRYWALL ENCLOSED FIRE WALL INSTALLATION. ADJUSTMENT OF THE WALL BOARD MAY BE NECESSARY TO PROVIDE CLEARANCE OF THE BOLT(S) WHILE MAINTAINING THE INTEGRITY OF THE DRYWALL ENCLOSED FIRE WALL ENCLOSURE.

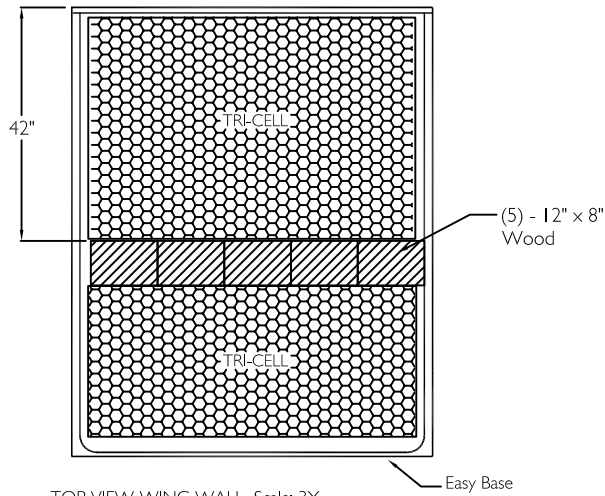
NOTE: THIS UNIT WILL ACCEPT A DOOR.

Job Name	Approved By Print Name		Date	COMFORT DESIGNS	
Project No	Approved By Signature			Model No. XST 6542 BF COL .875 WW MOD	
Comfort Designs 435 Industrial Road Savannah, TN 38372 tel 800.443.7269 fax 731.925.4290 www.comfortdesignsbathware.com	Architect			Drawing No. XST 6542 BF COL .875 WH-BW WHSW FHDP Loose Wing Wall Loose WCR CBC Tri-Cell Easy Base	
	Engineer			Date Issued. 4-4-12	Drawing Rev. 6-8-16
	Rep			Material. Gelcoat Surface	
	Wholesaler			Color.	
	Comments			Dimensions are in inches. Due to the nature of the materials dimensions may vary ± 1/2"	

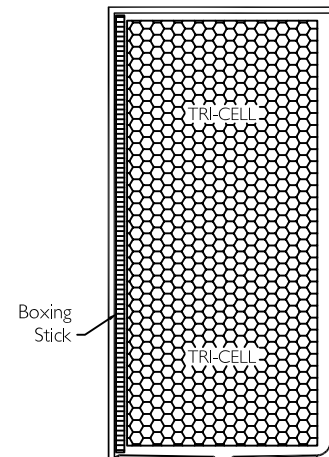
BOARD PLACEMENT

Board placement drawing: XST 6542 BF

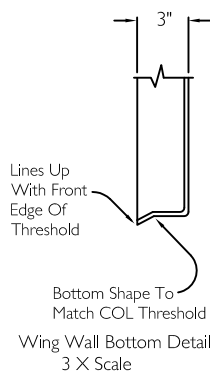
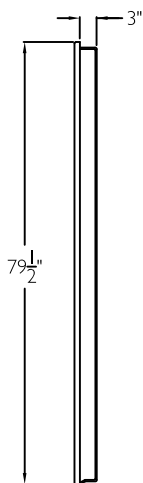
FRONT VIEW



SIDE VIEW



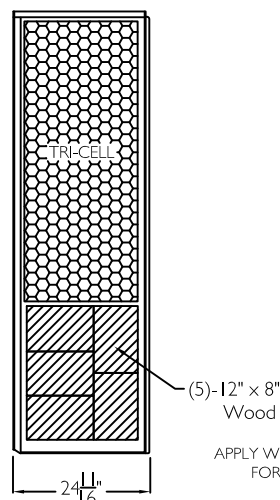
SIDE VIEW-WING WALL



TOP VIEW-WING WALL

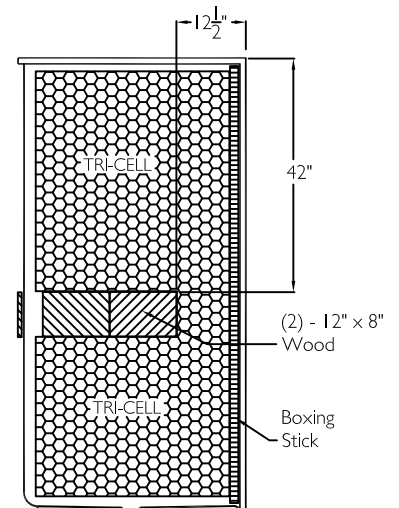


BACK VIEW-WING WALL



Wing Wall and Seat Field Installed By Others.

SIDE VIEW



Job Name	Approved By	Name	Date	COMFORT DESIGNS	
Project No	Architect			Model No. XST 6542 BF COL .875 WW	
Comfort Designs 435 Industrial Road Savannah, TN 38372 tel 800.443.7269 fax 731.925.4290 www.comfortdesignsbathware.com	Engineer			Drawing No. XST 6542 BF COL .875 WHBW WHSW FHDP Loose Wing Wall Loose WCR CBC Tri-Cell Easy Base-BP	
	Rep			Date Issued. 6-25-12	Drawing Rev. 6-8-16
	Wholesaler			Material. Gelcoat Surface	
	Comments			Color.	
				Dimensions are in inches. Due to the nature of the materials dimensions may vary $\pm 1/2"$	