

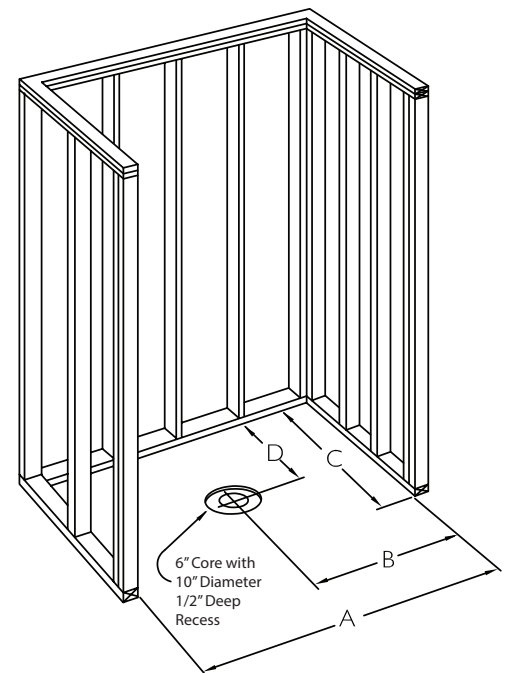
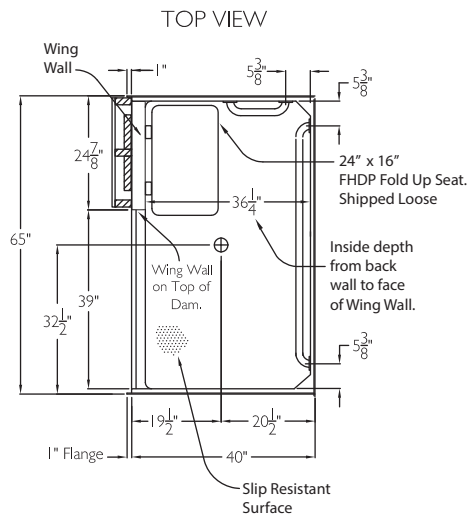
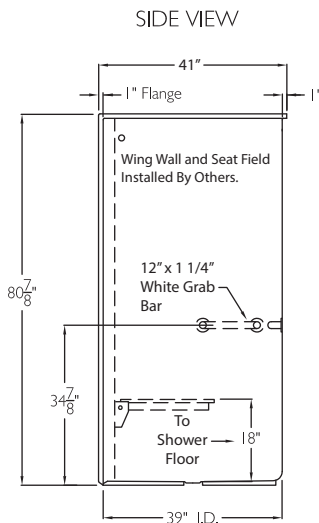
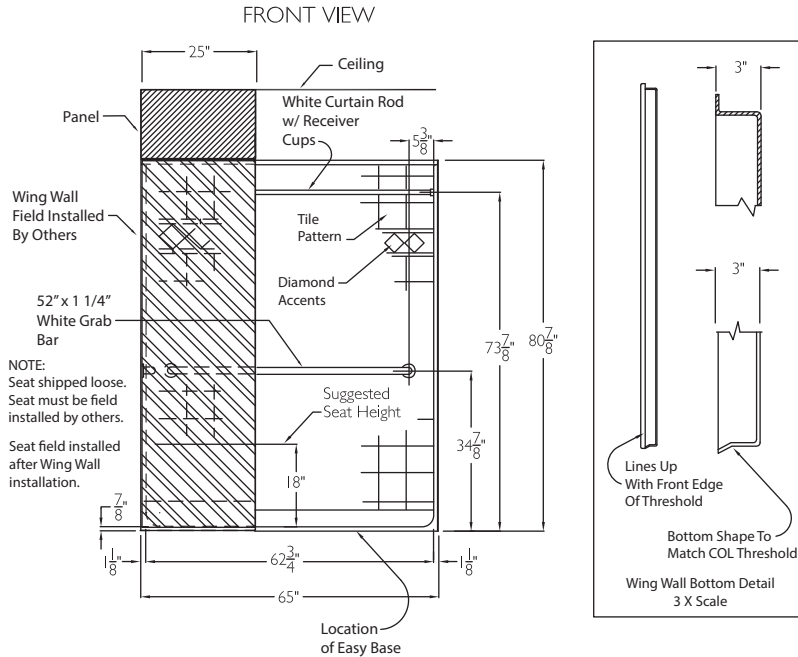
CD Technical Data Sheet

COMMERCIAL CODE COMPLIANT

XST6542BF COL WW

ADA/ANSI code compliant

NOTE: For ADA/ANSI compliance, pressure balancing mixing valve, hand-held shower with slide bar, vacuum breaker and 60" hose must be installed per ADA/ANSI guidelines.



CROSS SECTION OF THRESHOLD

ADA Allowed

1/2" (1:2) Change

In Level

Finished Floor

3/8"

2"

1/8"

Gelcoat

Steel Stiffener

Center of Drain

Factory Installed EasyBase™

5"

TECHNICAL INFORMATION

OD 65" x 41" x 80.875"

ID 60" x 36" center point

LOAD FACTOR 1.85

HANDED BY Wing Wall

FRAMING DIMENSIONS

A 65.25" B 32.625"

C 41" D 20.5"

ADDITIONAL CODES

ICC/ANSI I 7.1, ANSI I 24.2, ADAAG, BOCA, NAHB, UPC, Southern Building Code

cd
comfortdesigns

comfortdesignsbathware.com | 800.443.7269

CODE COMPLIANT
Enhancing Livable Design