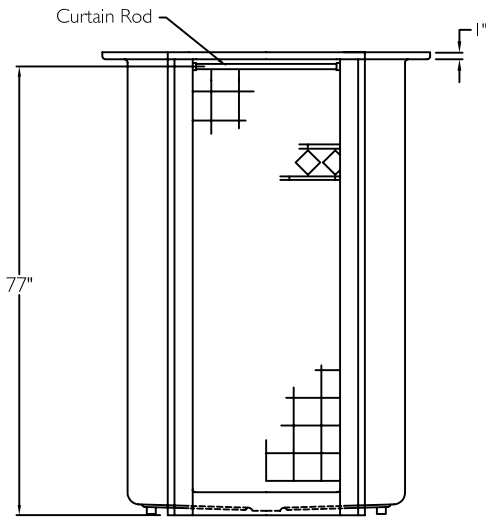


FRONT VIEW

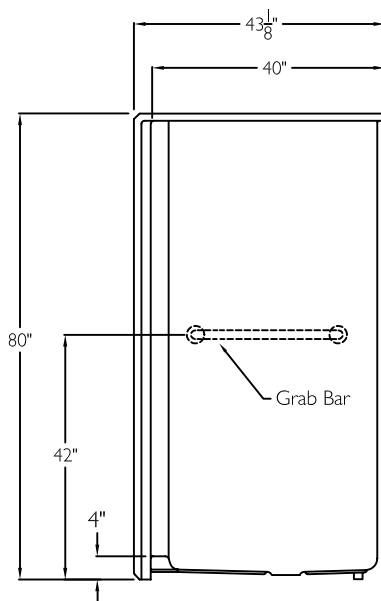


SUBMITTAL

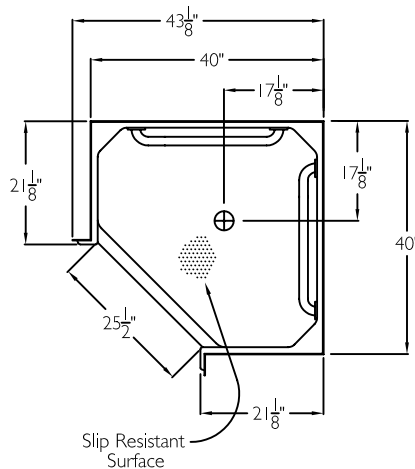
This shower enclosure shall be model SST 3838 SH 4.0" center. Finished surface shall be of a sanitary grade solid surface exhibiting a minimal thickness of 55 dry mils and a finished cured Barcoal hardness of 80-90 as tested with ASTM D-2583. Unit construction shall be of a molded reinforced fiberglass with a 15% minimum fiberglass content.

The unit shall have outside dimensions of 43 1/8" x 43 1/8" x 80". The unit shall meet ANSI Z124.1-2, HUD, FHA, BOCA, NAHB UPC, and shall meet the requirements of the Southern Building Code.

SIDE VIEW



TOP VIEW



The enclosure shall be equipped with the following accessories:
1) Two 24" x 1 1/2" diameter 18 gauge stainless steel grab bars, one horizontal on each side wall, both with 1 1/2" statute clearance, secured from the rear with stainless steel bolts and 3" x 3" x 11 gauge metal mounting plates, 2) one inch diameter, 18 gauge stainless steel curtain rod, with receiver cups, 3) tile finish, 4) diamond accents, 5) neo-corner design, 6) integral wing walls, 7) tri cell backing, 8) 4.0" threshold.

THIS UNIT FEATURES THE OUTSIDE DIMENSION OF 43 1/8" OF OVERALL WIDTH. THIS DOES NOT ALLOW FOR FULL ENCLOSURE OF THE BOLTS AND NUTS USED TO SECURE THE BARS AND SEAT IN PLACE. THE BOLT AND NUT COMBINATION SHOULD NOT PROTRUDE MORE THAN 3/4" ON EITHER SIDE OF THE SHOWER WALLS. THIS MAY REQUIRE THE NEED TO NOTCH STUDS TO ALLOW BOLT CLEARANCE FOR A DRYWALL ENCLOSED FIRE WALL INSTALLATION. ADJUSTMENT OF THE WALL BOARD MAY BE NECESSARY TO PROVIDE CLEARANCE OF THE BOLT(S) WHILE MAINTAINING THE INTEGRITY OF THE DRYWALL ENCLOSED FIRE WALL ENCLOSURE.

Job Name	Approved By	Name	Date	COMFORT DESIGNS	
Project No	Architect			Model No. SST 3838 SH 4.0-I	
Comfort Designs 435 Industrial Road Savannah, TN 38372 tel 800.443.7269 fax 731.925.4290 www.comfortdesignsbathware.com	Engineer			Drawing No. SST 3838 SH 4.0 HSW(2) CR	
	Rep			Date Issued. 4-16-12	Drawing Rev.
	Wholesaler			Material. Solid Surface	
	Comments			Color.	
				Dimensions are in inches. Due to the nature of the materials dimensions may vary ± 1/2"	