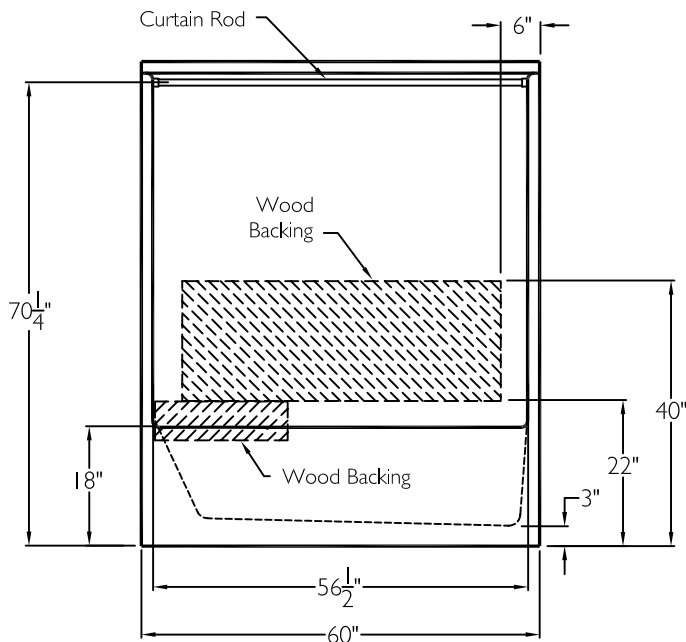


FRONT VIEW



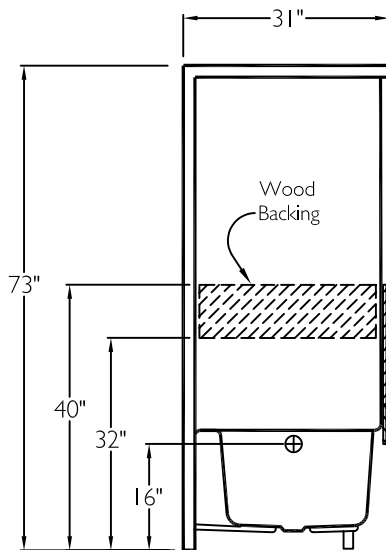
SUBMITTAL

This tub shower enclosure shall be model SSS 603I TS, right or left. Finished surface shall be of a sanitary grade solid surface exhibiting a minimal thickness of 55 dry mils and a finished cured Barcoal hardness of 80-90 as tested with ASTM D-2583. Unit construction shall be of a molded reinforced fiberglass with a 15% minimum fiberglass content.

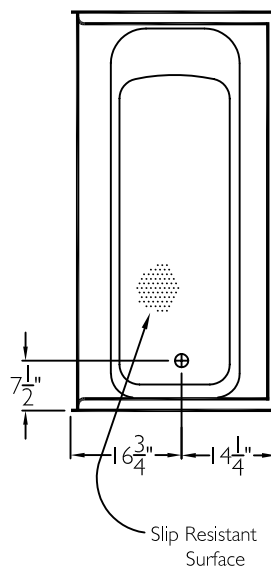
The unit shall have outside dimensions of 60" x 31" x 73".

The unit shall meet ANSI Z124.1-2, HUD, BOCA, NAHB, UPC, CSA, and shall meet the requirements of the Southern Building Code.

SIDE VIEW



TOP VIEW



The enclosure shall be equipped with the following accessories:
1) Wood backing on all walls for future bolt on grab bars and seat, to comply with applicable codes for barrier free code compliant tub shower, 2) tri cell backing, 3) one inch diameter 18 gauge stainless steel curtain rod with receiver cups, right or left hand drain.

(Future bolt on accessories by others).

THIS UNIT FEATURES THE OUTSIDE DIMENSION OF 60" OF OVERALL WIDTH. THIS DOES NOT ALLOW FOR FULL ENCLOSURE OF THE BOLTS AND NUTS USED TO SECURE THE BARS AND SEAT IN PLACE. THE BOLT AND NUT COMBINATION SHOULD NOT PROTRUDE MORE THAN 3/4" ON EITHER SIDE OF THE SHOWER WALLS. THIS MAY REQUIRE THE NEED TO NOTCH STUDS TO ALLOW BOLT CLEARANCE FOR A DRYWALL ENCLOSED FIRE WALL INSTALLATION. ADJUSTMENT OF THE WALL BOARD MAY BE NECESSARY TO PROVIDE CLEARANCE OF THE BOLT(S) WHILE MAINTAINING THE INTEGRITY OF THE DRYWALL ENCLOSED FIRE WALL ENCLOSURE.

NOTE: THIS UNIT WILL NOT ACCEPT A DOOR.

| | | | | | |
|--|-------------|------|------|---|--------------|
| Job Name | Approved By | Name | Date | COMFORT DESIGNS | |
| Project No | Architect | | | Model No. SSS 603I TS-I | |
| Comfort Designs 435 Industrial Road Savannah, TN 38372 tel 800.443.7269 fax 731.925.4290 www.comfortdesignsbathware.com | Engineer | | | Drawing No. SSS 603I TS CR | |
| | Rep | | | Date Issued. 4-9-12 | Drawing Rev. |
| | Wholesaler | | | Material. Solid Surface | |
| | Comments | | | Color. | |
| | | | | Dimensions are in inches. Due to the nature of the materials dimensions may vary $\pm 1/2"$ | |