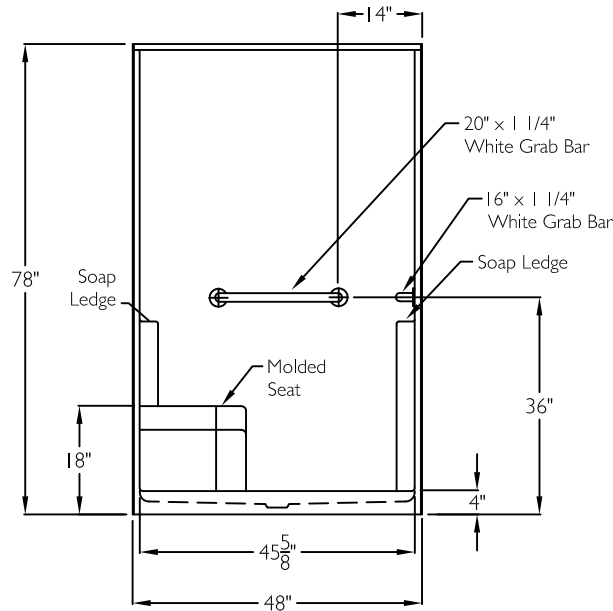


FRONT VIEW



SUBMITTAL

This shower enclosure shall be model XSS 4837 SH IS 4.0 right or left. Finished surface shall be of a sanitary grade applied acrylic. The base shall be attached to the sump in such manner to form an integral part with an inner and outer coating of polyester resin. Unit construction shall be of a molded reinforced fiberglass with a 15% minimum fiberglass content.

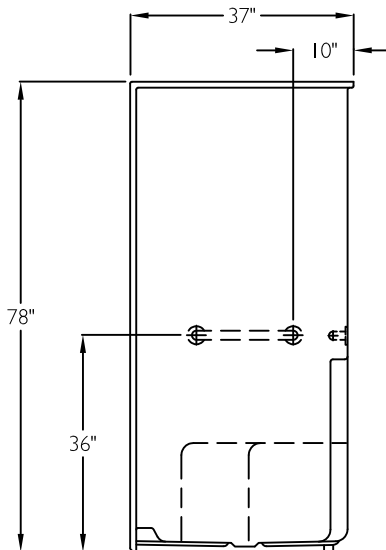
The unit shall have outside dimensions of 48" x 37" x 78". The unit shall meet CSA B45.5-11, HUD-UM73, and Home Innovation Research Lab.

HANDED BY THE SEAT

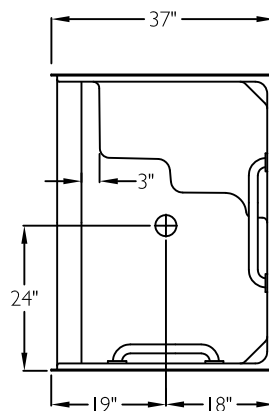
The enclosure shall be equipped with the following accessories:

- 1) One 20" x 1 1/4" diameter white horizontal grab bar on the back wall,
- 2) One 16" x 1 1/4" diameter white horizontal grab bar on the valve wall, both with 1 1/2" statute clearance, secured from the rear with stainless steel bolts, and 3" x 3" x 11 gauge metal mounting plates.
- 3) Large molded seat,
- 4) Molded corner soap ledges,
- 5) Center drain location,
- 6) 4.0" Threshold.

SIDE VIEW



TOP VIEW



THIS UNIT FEATURES THE OUTSIDE DIMENSION OF 48" OF OVERALL WIDTH. THIS DOES NOT ALLOW FOR FULL ENCLOSURE OF THE BOLTS AND NUTS USED TO SECURE THE BARS AND SEAT IN PLACE. THE BOLT AND NUT COMBINATION SHOULD NOT PROTRUDE MORE THAN 3/4" ON EITHER SIDE OF THE SHOWER WALLS. THIS MAY REQUIRE THE NEED TO NOTCH STUDS TO ALLOW BOLT CLEARANCE FOR A DRYWALL ENCLOSED FIRE WALL INSTALLATION. ADJUSTMENT OF THE WALL BOARD MAY BE NECESSARY TO PROVIDE CLEARANCE OF THE BOLT(S) WHILE MAINTAINING THE INTEGRITY OF THE DRYWALL ENCLOSED FIRE WALL ENCLOSURE.

Job Name	Approved By Print Name		Date	COMFORT DESIGNS	
Project No	Approved By Signature			Model No. XSS 4837 SH MS 4.0-I	
Comfort Designs 435 Industrial Road Savannah, TN 38372 tel 800.443.7269 fax 731.925.4290 www.comfortdesignsbathware.com	Architect			Drawing No. XSS 4837 SH MS WHBW WHSW	
	Engineer			Date Issued. 4-3-12	Drawing Rev. 12-1-16
	Rep			Material. Acrylic Surface	
	Wholesaler			Color.	
	Comments			Dimensions are in inches. Due to the nature of the materials dimensions may vary $\pm 1/2"$	