

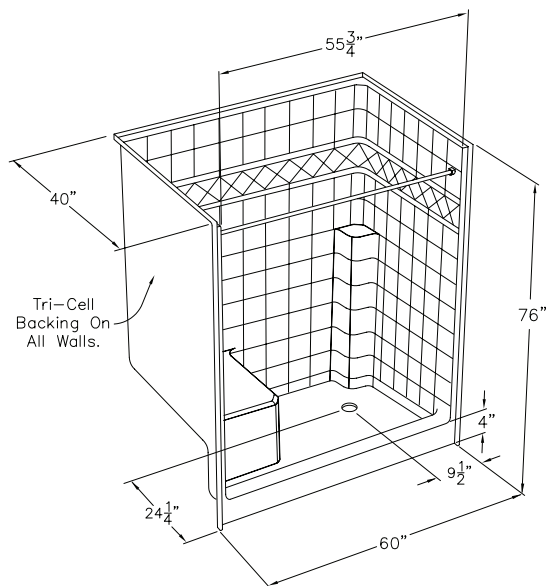
CD Product Sheet

LIVABLE DESIGN RESIDENTIAL

6039SH MS

OD 60" x 40" x 76"

MILLENNIA PACKAGE 6039SH MS-I shown in drawing



STANDARD FEATURES

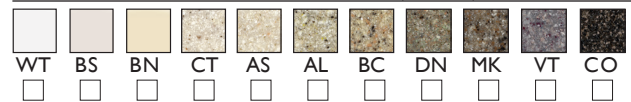
6 Inch Desinger Tile pattern
Solid Surface finish- 30 year limited warranty or
AcrylX™ finish- 30 year limited warranty
GripSure textured floor

NOTICE OF LIMITATION

Recess as needed to meet code
Adhere to floor as required

MILLENNIA
Enhancing Livable Design

FINISH COLOR SELECTION (Check One)



SOLID SURFACE: WT-white, BN-bone, BS-biscuit, CT-cotton seed, AS-ashley, AL-almond, BC-beach, DN-dune, MK-mink, VT-violet, CO-coco
ACRYLX™: WT-white, BN-bone, BS-biscuit

MILLENNIA PACKAGES (Check One)

Includes standard features plus Tri-Cell honeycomb wall construction and accessories detailed below.

*NOTE: Plumbing is not included in comfort package. To add plumbing use modify package options below and select valve and shower assembly.

☐ SOLID SURFACE MILLENNIA PACKAGE

SST6039SH MS-I

stainless steel curtain rod, integral seat

☐ ACRYLX™ MILLENNIA PACKAGE

XST6039SH MS-I

white curtain rod, integral seat

BUILD TO ORDER BASE MODELS (Check One)

Standard features only. All additional options must be selected from modify package options list.

☐ SOLID SURFACE BASE MODEL

SST6039SH MS

☐ ACRYLX™ BASE MODEL

XST6039SH MS

MODIFY PACKAGE OPTIONS

After selecting base model or prepackaged model, select modify package options to add or change options. Add nomenclature in bold to prepackaged model number. Example: MODEL#-I-PB for pressure balancing mixing valve option.

WALL REINFORCEMENT

☐ TC Tri-Cell honeycomb

☐ FWB Full wood backing

☐ FBP Future placement for bars/seats

VERTICAL GRAB BAR

☐ VW ComfortCare™ 24" white

☐ CVS ComfortCare™ 24" steel

☐ VS Stainless 24" X 1.50

CURTAIN ROD

☐ CRW Curtain rod/cups white

☐ CRS Curtain rod/cups stainless steel

CURTAIN

☐ CPW Polyester weighted white

☐ CVW Vinyl weighted white

VALVE & SHOWER ASSEMBLY

☐ PB Pressure balancing mixing valve (ADA/ANSI)

☐ HH Hand held shower assembly with slide bar, vacuum breaker and 60" hose (ADA/ANSI)

DRAIN

☐ DR Drain no caulk brass

P3

☐ P3 P3 Armorshield

*not available on solid surface models

ANTIMICROBIAL

☐ SS SmartSilver

TRIM

☐ TK Trim Kit

cd
comfortdesigns

comfortdesignsbathware.com | 800.443.7269