

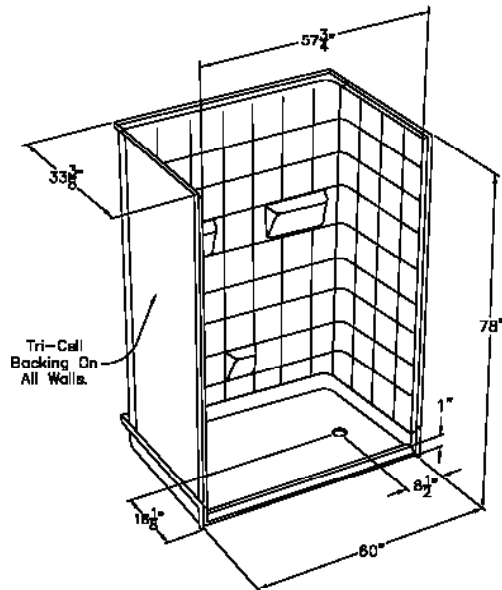
# CD Product Sheet

## MULTI-PIECE RESIDENTIAL

### 6033BF 5P L/R

OD 60" x 33.375" x 78"

MULTI-PIECE PACKAGE 6033BF 5P L/R-I shown in drawing



#### STANDARD FEATURES

6 Inch Desinger Tile pattern  
Barrier-Free Threshold  
Multi-Piece Design  
AcrylX™ finish- 30 year limited warranty  
GripSure textured floor  
EasyBase™

#### NOTICE OF LIMITATION

Recess as needed to meet code  
Adhere to floor as required

#### FINISH COLOR SELECTION (Check One)



ACRYLX™: WT-white, BN-bone, BS-biscuit

#### MULTI-PIECE PACKAGES (Check One)

Includes standard features plus Tri-Cell honeycomb wall construction and accessories detailed below.

\*NOTE: Plumbing is not included in comfort package. To add plumbing use modify package options below and select valve and shower assembly.

- ☐ **ACRYLX™ MULTI-PIECE PACKAGE**  
XST6033BF 5P L/R-I  
stainless steel curtain rod

#### BUILD TO ORDER BASE MODELS (Check One)

Standard features only. All additional options must be selected from modify package options list.

- ☐ **ACRYLX™ BASE MODEL**  
XST6033BF 5P L/R

#### MODIFY PACKAGE OPTIONS

After selecting base model or prepackaged model, select modify package options to add or change options. Add nomenclature in bold to prepackaged model number. Example: MODEL#-I-PB for pressure balancing mixing valve option.

- |                                    |   |   |
|------------------------------------|---|---|
| <b>WALL REINFORCEMENT</b>          | <input type="checkbox"/> <b>TC</b> Tri-Cell honeycomb                         | <input type="checkbox"/> <b>FWB</b> Full wood backing   |
|                                    | <input type="checkbox"/> <b>FBP</b> Future placement for bars/seats           |   |
| <b>L-BAR CONFIGURATION</b>         | <input type="checkbox"/> <b>LW</b> ComfortCare™ 1.25 white                    | <input type="checkbox"/> <b>CLS</b> ComfortCare™ 1.25 stainless   |
| <b>VERTICAL GRAB BAR</b>           | <input type="checkbox"/> <b>VW</b> ComfortCare™ 24" white                     | <input type="checkbox"/> <b>CVS</b> ComfortCare™ 24" steel  |
| <b>L SHAPED FOLD-UP SEAT</b>       | <input type="checkbox"/> <b>PD</b> Padded white                               | <input type="checkbox"/> <b>HD</b> HDPE white   |
| <b>CURTAIN ROD</b>                 | <input type="checkbox"/> <b>CRW</b> Curtain rod/cups white                    | <input type="checkbox"/> <b>CRS</b> Curtain rod/cups stainless steel  |
| <b>CURTAIN</b>                     | <input type="checkbox"/> <b>CPW</b> Polyester weighted white                  | <input type="checkbox"/> <b>CVW</b> Vinyl weighted white  |
| <b>VALVE &amp; SHOWER ASSEMBLY</b> | <input type="checkbox"/> <b>PB</b> Pressure balancing mixing valve (ADA/ANSI) | <input type="checkbox"/> <b>HH</b> Hand held shower assembly with slide bar, vacuum breaker and 60" hose (ADA/ANSI) |
| <b>WATER DAM</b>                   | <input type="checkbox"/> <b>CD</b> Collapsible dam w/white                    | <input type="checkbox"/> <b>SEMI</b> Semi-permanent dam   |
| <b>DRAIN</b>                       | <input type="checkbox"/> <b>DR</b> Drain no caulk brass                       |   |
| <b>P3</b>                          | <input type="checkbox"/> <b>P3</b> P3 Armorshield                             |   |
| <b>ANTIMICROBIAL</b>               | <input type="checkbox"/> <b>SS</b> SmartSilver                                |   |
| <b>TRIM</b>                        | <input type="checkbox"/> <b>TK</b> Trim Kit                                   |   |

\*not available on solid surface models

**cd**  
comfortdesigns

comfortdesignsbathware.com | 800.443.7269

MULTI-PIECE LINE  
Enhancing Livable Design