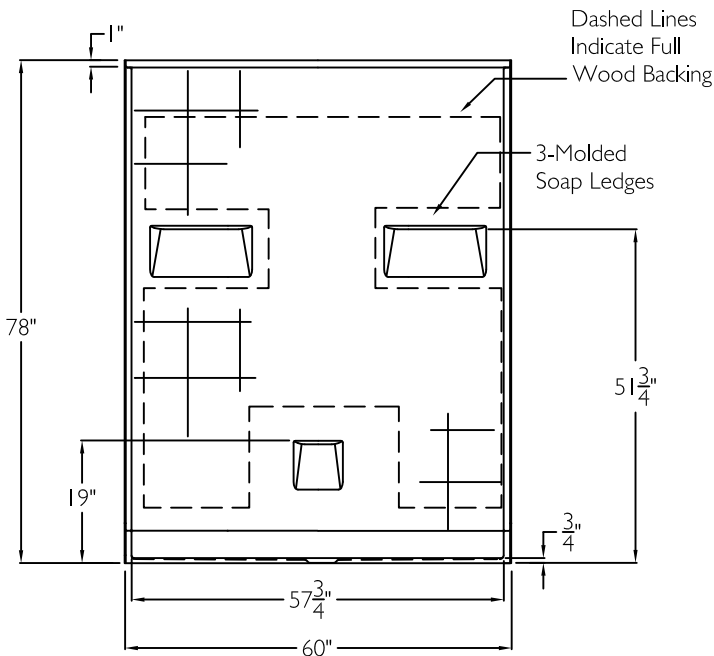
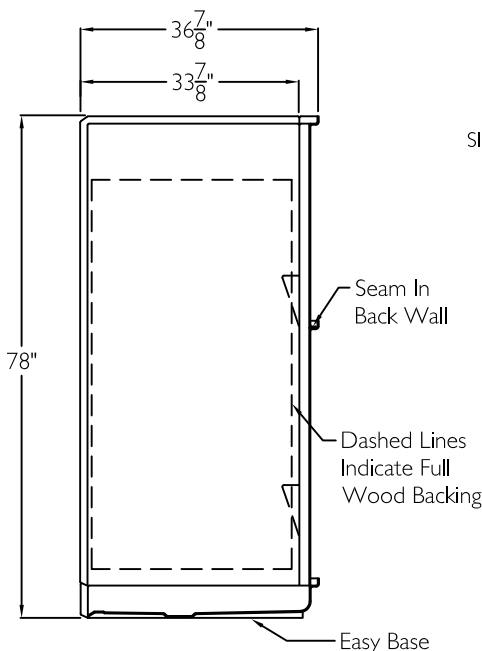


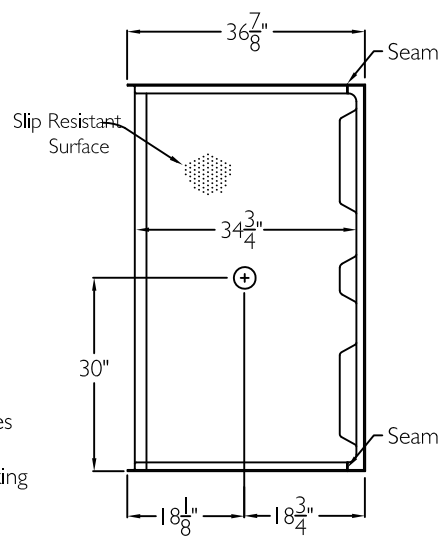
## FRONT VIEW



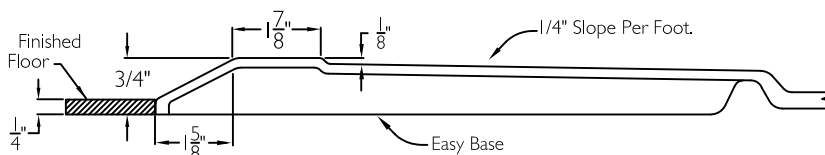
## SIDE VIEW



## TOP VIEW



## CROSS SECTION OF THRESHOLD



## SUBMITTAL

This shower enclosure shall be model XST 6036 BF 5P .75 center. Finished surface shall be of a sanitary grade applied acrylic. The base shall be attached to the sump in such manner to form an integral part with an inner and outer coating of polyester resin. Unit construction shall be of a molded reinforced fiberglass with a 15% minimum fiberglass content.

The unit shall have outside dimensions of 60" x 36 7/8" x 78". The unit shall meet CSA B45.5-1 I, HUD-UM73, and Home Innovation Research Lab.

## HANDED BY THE CENTER

The enclosure shall be equipped with the following accessories:

- 1) Molded soap dishes on the back wall,
- 2) Tile pattern on walls,
- 3) Five piece sectional design,
- 4) Center drain location,
- 5) Self locking guide pin system,
- 6) Full wood backing on walls,
- 7) Factory installed Easy Base self sustaining bottom,
- 8) 3/4" Change of level threshold.

THIS UNIT FEATURES THE OUTSIDE DIMENSION OF 60" OF OVERALL WIDTH. THIS DOES NOT ALLOW FOR FULL ENCLOSURE OF THE BOLTS AND NUTS USED TO SECURE THE BARS AND SEAT IN PLACE. THE BOLT AND NUT COMBINATION SHOULD NOT PROTRUDE MORE THAN 3/4" ON EITHER SIDE OF THE SHOWER WALLS. THIS MAY REQUIRE THE NEED TO NOTCH STUDS TO ALLOW BOLT CLEARANCE FOR A DRYWALL ENCLOSED FIRE WALL INSTALLATION. ADJUSTMENT OF THE WALL BOARD MAY BE NECESSARY TO PROVIDE CLEARANCE OF THE BOLT(S) WHILE MAINTAINING THE INTEGRITY OF THE DRYWALL ENCLOSED FIRE WALL ENCLOSURE.

Job Name	Approved By Print Name	Date	COMFORT DESIGNS	
Project No	Approved By Signature		Model No. XST 6036 BF 5P .75 C-1	
Comfort Designs 435 Industrial Road Savannah, TN 38372 tel 800.443.7269 fax 731.925.4290 www.comfortdesignsbathware.com	Architect		Drawing No. XST 6036 BF 5P .75 FWB Easy Base	
	Engineer		Date Issued. 4-3-12	
	Rep		Drawing Rev. 12-5-16	
	Wholesaler		Material. Acrylic Surface	
	Comments		Color.	
			Dimensions are in inches. Due to the nature of the materials dimensions may vary $\pm 1/2"$	