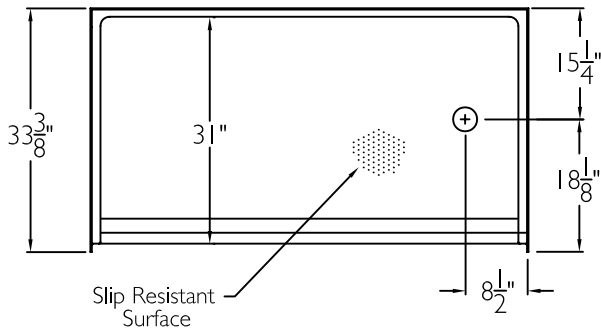
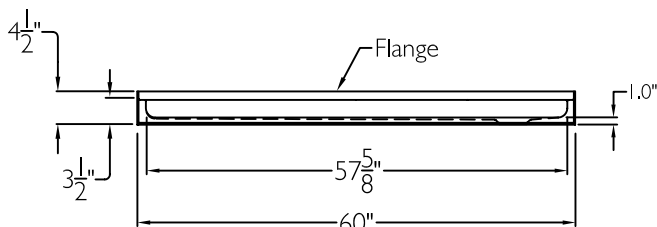


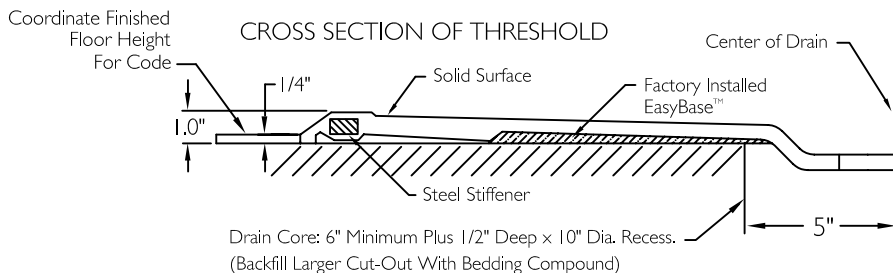
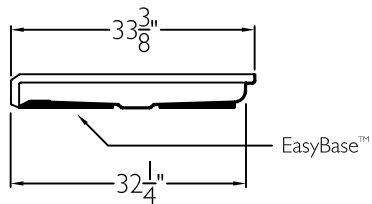
TOP VIEW



FRONT VIEW



SIDE VIEW



## SUBMITTAL

This shower enclosure shall be model SSB 6033 BF I.0 Base left or right drain. Finished surface shall be of a sanitary grade solid surface exhibiting a minimal thickness of 55 dry mils and a finished cured Barcoal hardness of 80-90 as tested with ASTM D-2583. Unit construction shall be of a molded reinforced fiberglass with a 15% minimum fiberglass content.

The unit shall have outside dimensions of 60" x 33 3/8" x 4 1/2" with a 1.0" threshold.

The unit shall meet ANSI Z124.1-2, BOCA, NAHB, UPC, CSA, shall meet the requirements of the Southern Building Code.

The enclosure shall be equipped with the following features:

- 1) Low entry change of level threshold,
- 2) EasyBase™ self sustaining bottom,
- 3) Slip resistant surface on floor,
- 4) Solid Surface finish,
- 5) 1.0" threshold.

THIS UNIT FEATURES THE OUTSIDE DIMENSIONS OF 60" AND 33 3/8". FINISHED WALLS ABOVE THE SHOWER BASE BY OTHERS.

THIS SHOWER BASE IS AVAILABLE WITH SECTIONAL WALL SYSTEM MODEL: SST 6033 BF I.0 COL L-R.

|                                                                                                                                        |             |      |      |                                                                                             |              |
|----------------------------------------------------------------------------------------------------------------------------------------|-------------|------|------|---------------------------------------------------------------------------------------------|--------------|
| Job Name                                                                                                                               | Approved By | Name | Date | COMFORT DESIGNS                                                                             |              |
| Project No                                                                                                                             | Architect   |      |      | Model No. SSB 6033 BF I.0 COL L-R Base-I                                                    |              |
| Comfort Designs<br>435 Industrial Road<br>Savannah, TN 38372<br>tel 800.443.7269<br>fax 731.925.4290<br>www.comfortdesignsbathware.com | Engineer    |      |      | Drawing No. SSB 6033 BF I.0 COL L-R EB                                                      |              |
|                                                                                                                                        | Rep         |      |      | Date Issued. 4-21-12                                                                        | Drawing Rev. |
|                                                                                                                                        | Wholesaler  |      |      | Material. Solid Surface                                                                     |              |
|                                                                                                                                        | Comments    |      |      | Color.                                                                                      |              |
|                                                                                                                                        |             |      |      | Dimensions are in inches. Due to the nature of the materials dimensions may vary $\pm 1/2"$ |              |