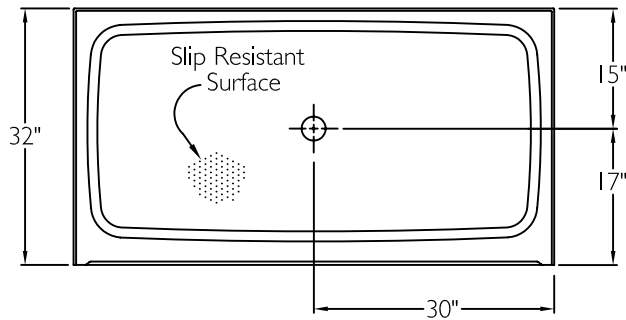
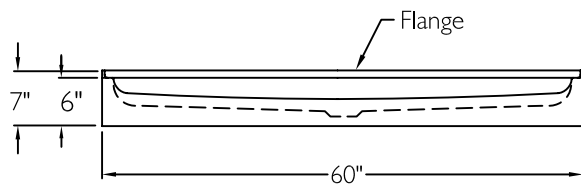


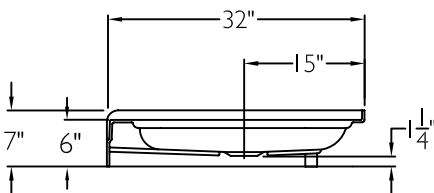
TOP VIEW



FRONT VIEW



SIDE VIEW



SUBMITTAL

This shower enclosure shall be model XSB 6032 SH 6.0 Base center drain. Finished surface shall be of a sanitary grade acrylic exhibiting a minimal thickness of 15 dry mils and a finished cured Barcoal hardness of 80-90 as tested with ASTM D-2583. Unit construction shall be of a molded reinforced fiberglass with a 15% minimum fiberglass content.

The unit shall have outside dimensions of 60" x 32" x 7" with a 6.0" threshold.

The unit shall meet ANSI Z124.1-2, BOCA, NAHB, UPC, CSA, shall meet the requirements of the Southern Building Code.

The enclosure shall be equipped with the following features:

- 1) Acrylic finish,
- 2) Slip resistant surface on floor,
- 3) Center drain location,
- 4) 6.0" threshold.

THIS UNIT FEATURES THE OUTSIDE DIMENSIONS OF 60" AND 32" FINISHED WALLS ABOVE THE SHOWER BASE BY OTHERS.

Job Name	Approved By	Name	Date	COMFORT DESIGNS	
Project No	Architect			Model No. XAB 6032 SH 6.0 Base Center Drain	
Comfort Designs 435 Industrial Road Savannah, TN 38372 tel 800.443.7269 fax 731.925.4290 www.comfortdesignsbathware.com	Engineer			Drawing No. XAB 6032 SH 6.0 C	
	Rep			Date Issued. 6-18-12	Drawing Rev.
	Wholesaler			Material. Acrylic	
	Comments			Color.	
				Dimensions are in inches. Due to the nature of the materials dimensions may vary $\pm 1/2"$	