

NOTE: all bolt on accessories shipped loose, to be field installed by others.

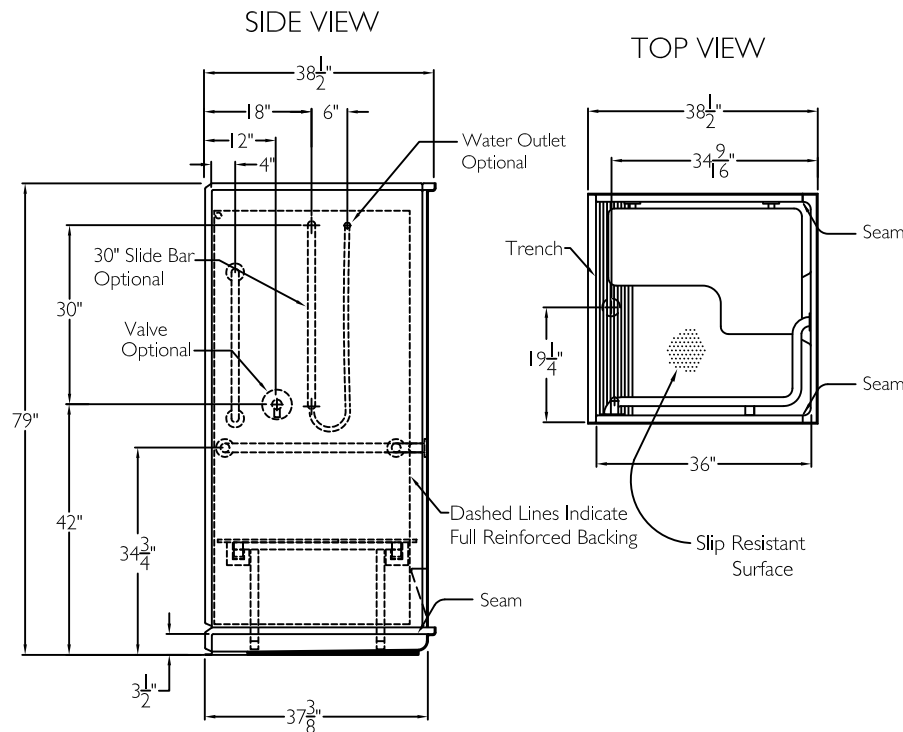
## SUBMITTAL

This shower enclosure shall be model XST 3838 TR .75 4P center, left, or right. Finished surface shall be of a sanitary grade AcrylX™ applied acrylic. The base shall be attached to the sump in such manner to form an integral part with an inner and outer coating of polyester resin. Unit construction shall be of a molded reinforced fiberglass with a 15% minimum fiberglass content.

The unit shall have outside dimensions of 38 1/2" x 38 1/2" x 79". The unit shall meet CSA B45.5-11, IAPMO Z124, HUD-UM73, ADA, ANSI A117.1, ANSI Z124, and Home Innovation Research Lab.

## HANDED BY THE VALVE

The enclosure shall be equipped with the following accessories: 1) One 18" x 33 1/2" x 1 1/4" diameter white concealed flange horizontal L-grab bar, 2) One 24" x 1 1/4" diameter white concealed flange vertical grab bar on the valve wall, both with 1 1/2" statute clearance, secured in the field by others with stainless steel bolts, 3) 32" x 21" white frameless HDPE fold up seat with legs, 4) One inch diameter, 18 gauge white curtain rod with receiver cups, (grab bars, seat, and curtain rod shipped loose, to be field installed by others), 5) Subway tile pattern, 6) Molded ledge low on the back wall, 7) Four piece sectional design, 8) Full reinforced backing on all walls, 9) Integral front trench drain, 10) Factory installed Armor Core Easy Base, 11) 3/4" threshold.



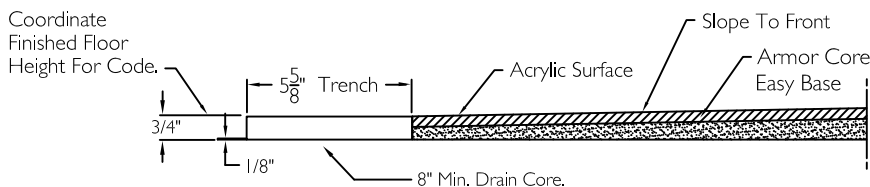
### OPTIONAL ACCESSORIES:

Factory Plumbing Install Option: ☐ YES ☐ NO

☐ PB Pressure Balancing Mixing Valve (ADA / ANSI)

☐ HH Hand held shower assembly with slide bar, vacuum breaker and 60" hose (ADA / ANSI)

### CROSS SECTION OF THRESHOLD



THIS UNIT FEATURES THE OUTSIDE DIMENSION OF 38 1/2" OF OVERALL WIDTH. THIS DOES NOT ALLOW FOR FULL ENCLOSURE OF THE BOLTS AND NUTS USED TO SECURE THE BARS AND SEAT IN PLACE. THE BOLT AND NUT COMBINATION SHOULD NOT PROTRUDE MORE THAN 3/4" ON EITHER SIDE OF THE SHOWER WALLS. THIS MAY REQUIRE THE NEED TO NOTCH STUDS TO ALLOW BOLT CLEARANCE FOR A DRYWALL ENCLOSED FIRE WALL INSTALLATION. ADJUSTMENT OF THE WALL BOARD MAY BE NECESSARY TO PROVIDE CLEARANCE OF THE BOLT(S) WHILE MAINTAINING THE INTEGRITY OF THE DRYWALL ENCLOSED FIRE WALL ENCLOSURE.

NOTE: THIS UNIT WILL NOT ACCEPT A DOOR.

Job Name	Approved By Print Name	Date	<b>COMFORT DESIGNS</b>	
Project No	Approved By Signature		Model No. XST 3838 TR 4P .75 L-Bar-I	
Comfort Designs 435 Industrial Road Savannah, TN 38372 tel 800.443.7269 fax 731.925.4290 www.comfortdesignsbathware.com	Architect		Drawing No. XST 3838 TR 4P .75 WLB WVB FHDP WCR FWB Easy Base	
	Engineer		Date Issued. 4-3-12	Drawing Rev. 9-22-17
	Rep		Material. AcrylX™ applied acrylic	
	Wholesaler		Color.	
	Comments		Dimensions are in inches. Due to the nature of the materials dimensions may vary ± 1/2"	