

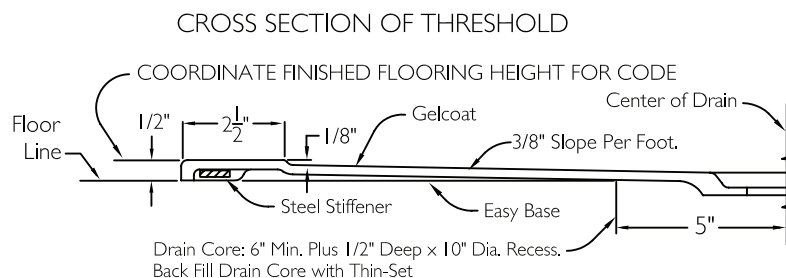
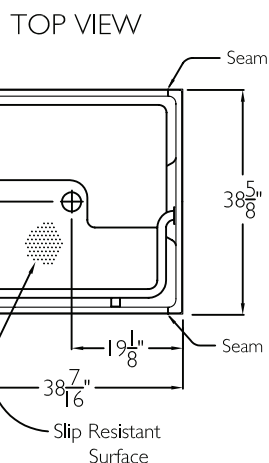
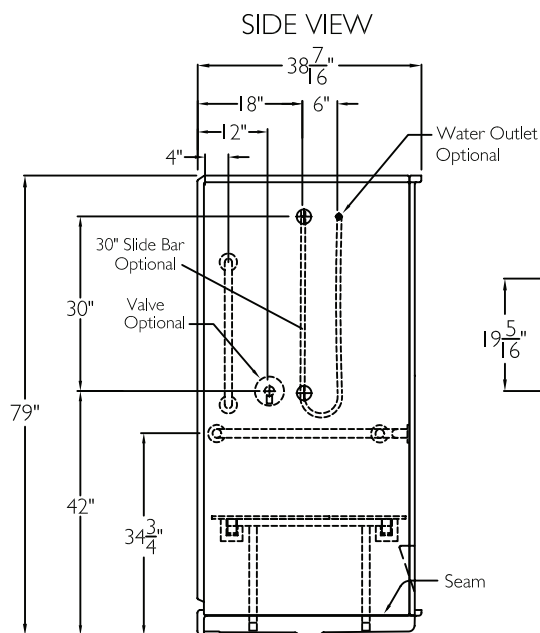
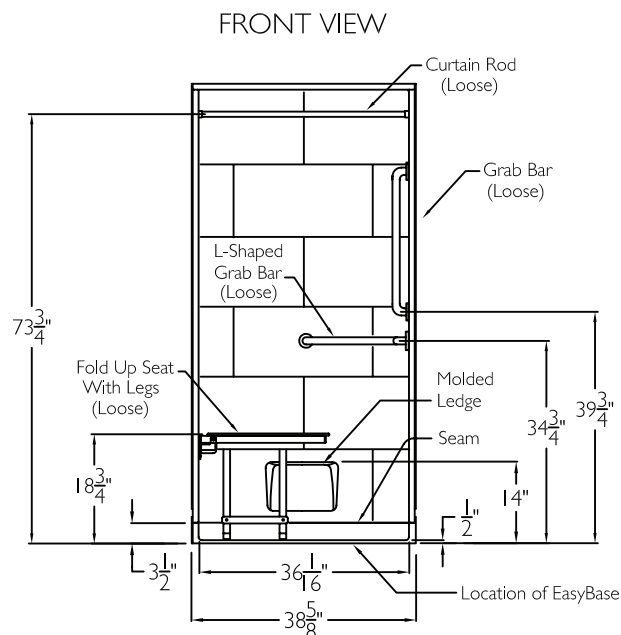
# CD Technical Data Sheet

## COMMERCIAL CODE COMPLIANT

### XST3838BF .50 4P

ADA/ANSI code compliant

NOTE: For ADA/ANSI compliance, pressure balancing mixing valve, hand-held shower with slide bar, vacuum breaker and 60" hose must be installed per ADA/ANSI guidelines.

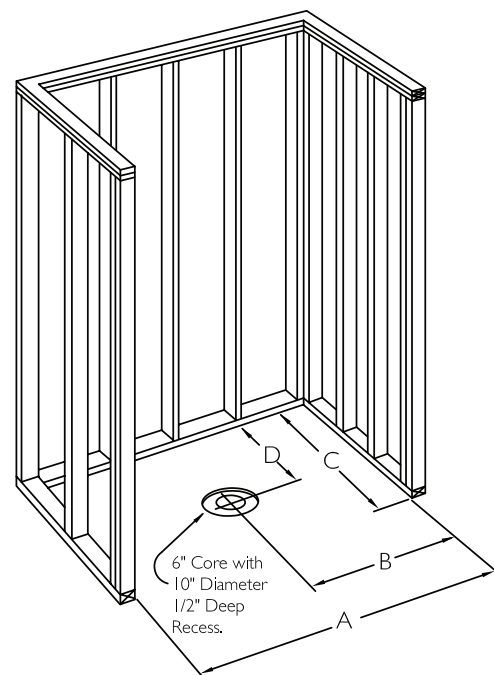


## TECHNICAL INFORMATION

OD 38.625" x 38.5" x 79"

ID 36" x 36" center point

HANDED BY Valve Wall



## FRAMING DIMENSIONS

A 38.875" B 19.375"

C 38.5" D 19.125"

## ADDITIONAL CODES

CSA B45.5-11, HUD, BOCA, NAHB, IAPMOZ124-2011, Southern Building Codes. With fold-up seat and grab bar package complies with ADA and ANSI A117.1-2003.

**cd**  
comfortdesigns

comfortdesignsbathware.com | 800.443.7269

**CODE COMPLIANT**  
Enhancing Livable Design