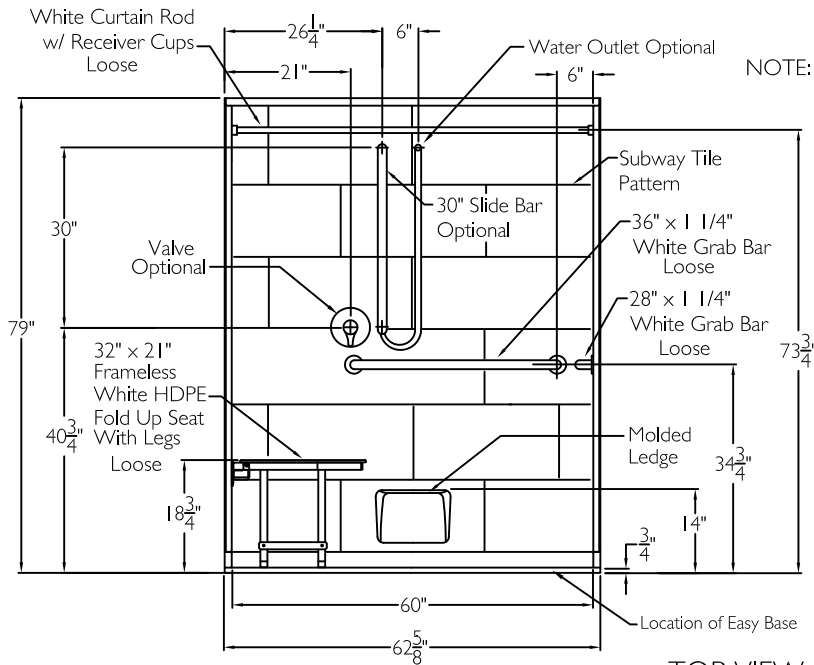


# FRONT VIEW



NOTE: all bolt on accessories shipped loose, to be field installed by others.

**cd**  
comfortdesigns

## SUBMITTAL

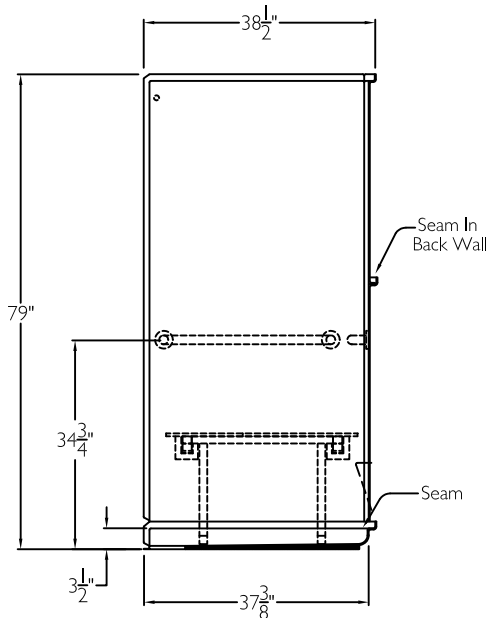
This shower enclosure shall be model XST 6238 TR .75 5P left, or right. Finished surface shall be of a sanitary grade applied acrylic. The base shall be attached to the sump in such manner to form an integral part with an inner and outer coating of polyester resin. Unit construction shall be of a molded reinforced fiberglass with a 15% minimum fiberglass content.

The unit shall have outside dimensions of 62 5/8" x 38 1/2" x 79". The unit shall meet CSA B45.5-11, HUD-UM73, ADA, ANSI A117.1, and Home Innovation Research Lab.

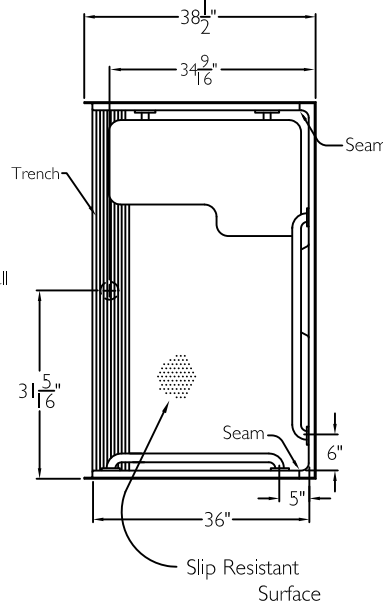
## HANDED BY THE SEAT

The enclosure shall be equipped with the following accessories:  
1) One 36" x 1 1/4" diameter white horizontal grab bar on the back wall, 2) One 28" x 1 1/4" diameter white horizontal grab bar on the side wall, both with 1 1/2" statute clearance, NOTE: shipped loose, to be field installed by others, with stainless steel bolts, 3) 32" x 21" frameless white HDPE fold up seat with legs, 4) One inch diameter, 18 gauge white curtain rod with receiver cups, (grab bars, seat, and curtain rod shipped loose, field installed by others), 5) Molded ledge low on the back wall, 6) 5 piece sectional design, 7) Subway tile pattern, 8) Full reinforced backing on all walls, 9) Integral front trench drain, 10) Factory installed Armor Core Easy Base, 11) 3/4" threshold.

## SIDE VIEW



## TOP VIEW



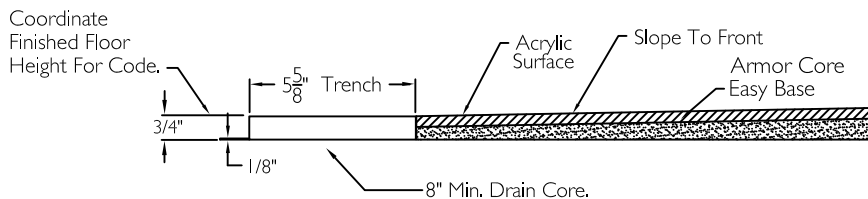
### OPTIONAL ACCESSORIES:

Factory Plumbing Install Option: ☐ YES ☐ NO

☐ PB Pressure Balancing Mixing Valve (ADA / ANSI)

☐ HH Hand held shower assembly with slide bar, vacuum breaker and 60" hose (ADA / ANSI)

## CROSS SECTION OF THRESHOLD



THIS UNIT FEATURES THE OUTSIDE DIMENSION OF 62 5/8" OF OVERALL WIDTH. THIS DOES NOT ALLOW FOR FULL ENCLOSURE OF THE BOLTS AND NUTS USED TO SECURE THE BARS AND SEAT IN PLACE. THE BOLT AND NUT COMBINATION SHOULD NOT PROTRUDE MORE THAN 3/4" ON EITHER SIDE OF THE SHOWER WALLS. THIS MAY REQUIRE THE NEED TO NOTCH STUDS TO ALLOW BOLT CLEARANCE FOR A DRYWALL ENCLOSED FIRE WALL INSTALLATION. ADJUSTMENT OF THE WALL BOARD MAY BE NECESSARY TO PROVIDE CLEARANCE OF THE BOLT(S) WHILE MAINTAINING THE INTEGRITY OF THE DRYWALL ENCLOSED FIRE WALL ENCLOSURE.

NOTE: THIS UNIT WILL NOT ACCEPT A DOOR.

Job Name	Approved By Print Name	Date	COMFORT DESIGNS	
Project No	Approved By Signature		Model No. XST 6238 TR 5P .75 L-Bar-I	
Comfort Designs 435 Industrial Road Savannah, TN 38372 tel 800.443.7269 fax 731.925.4290 www.comfortdesignsbathware.com	Architect		Drawing No. XST 6238 TR 5P .75 WHBW WHSW HDPE WCR Tri-Cell Easy Base	
	Engineer		Date Issued. 4-3-12	Drawing Rev. 4-14-17
	Rep		Material. Acrylic Surface	
	Wholesaler		Color.	
	Comments		Dimensions are in inches. Due to the nature of the materials dimensions may vary ± 1/2"	