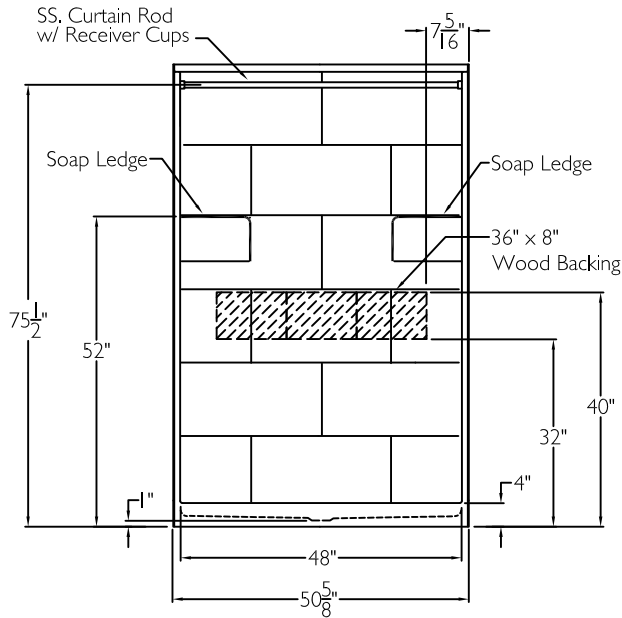
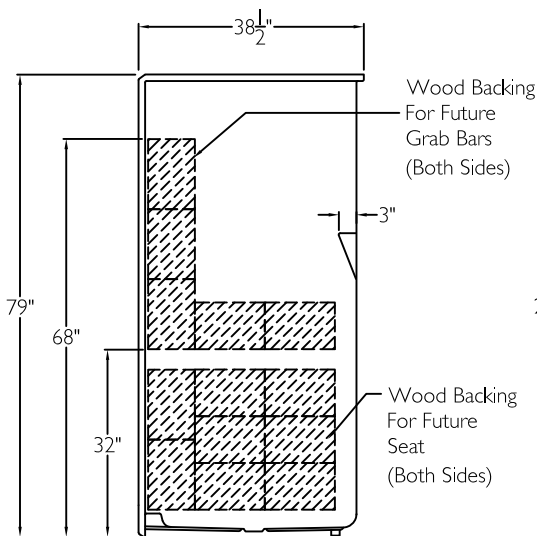


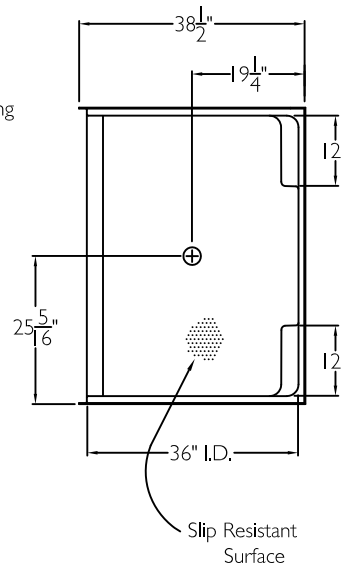
FRONT VIEW



SIDE VIEW



TOP VIEW



SUBMITTAL

This shower enclosure shall be model SST 5038 SH 4.0 center, right, or left. Finished surface shall be of a sanitary grade solid surface exhibiting a minimal thickness of 55 dry mils and a finished cured Barcoal hardness of 80-90 as tested with ASTM D-2583. Unit construction shall be of a molded reinforced fiberglass with a 15% minimum fiberglass content.

The unit shall have outside dimensions of 50 5/8" x 38 1/2" x 79" with a 4.0" threshold. The base shall be attached to the sump in such a manner to form an integral part with an inner and outer coating of reinforced polyester resin. The unit shall meet ANSI Z124.1-2, HUD, BOCA, Home Innovation Research Lab, UPC, CSA, and meet requirements of Southern Building Code.

HANDED BY THE CENTER DRAIN

The enclosure shall be equipped with the following accessories:

- 1) Wood backing on the back wall for future horizontal grab bar,
- 2) Wood backing on both side walls for future horizontal and vertical grab bars, (Future Grab Bars By Others),
- 3) Wood backing on both side walls for future fold up seat. (Future Seat By Others),
- 4) One inch diameter, 18 gauge stainless steel curtain rod with receiver cups,
- 5) Molded corner soap ledges,
- 6) Tile finish on walls,
- 7) Tri-Cell backing,
- 8) 4.0" Threshold.

THIS UNIT FEATURES THE OUTSIDE DIMENSION OF 50 5/8" OF OVERALL WIDTH. THIS DOES NOT ALLOW FOR FULL ENCLOSURE OF THE BOLTS AND NUTS USED TO SECURE THE BARS AND SEAT IN PLACE. THE BOLT AND NUT COMBINATION SHOULD NOT PROTRUDE MORE THAN 3/4" ON EITHER SIDE OF THE SHOWER WALLS. THIS MAY REQUIRE THE NEED TO NOTCH STUDS TO ALLOW BOLT CLEARANCE FOR A DRYWALL ENCLOSED FIRE WALL INSTALLATION. ADJUSTMENT OF THE WALL BOARD MAY BE NECESSARY TO PROVIDE CLEARANCE OF THE BOLT(S) WHILE MAINTAINING THE INTEGRITY OF THE DRYWALL ENCLOSED FIRE WALL ENCLOSURE.

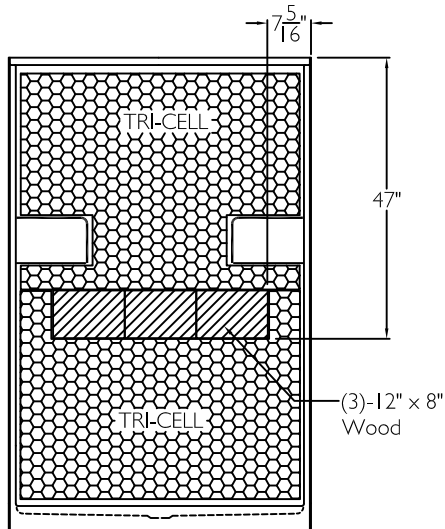
NOTE: THIS UNIT WILL NOT ACCEPT A DOOR.

Job Name	Approved By Print Name	Date	COMFORT DESIGNS	
Project No	Approved By Signature		Model No. SST 5038 SH 4.0 ANSI Type B	
Comfort Designs 435 Industrial Road Savannah, TN 38372 tel 800.443.7269 fax 731.925.4290 www.comfortdesignsbathware.com	Architect		Drawing No. SST 5038 SH 4.0 FBP Tri-Cell CR	
	Engineer		Date Issued, 4-10-14	Drawing Rev. 5-29-14
	Rep		Material. Solid Surface	
	Wholesaler		Color.	
	Comments		Dimensions are in inches. Due to the nature of the materials dimensions may vary $\pm 1/2"$	

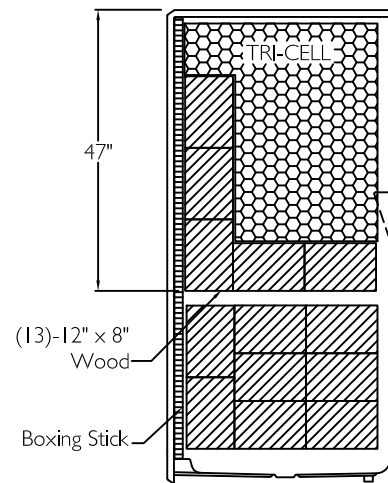
SUBMITTAL

Model SST 5038 SH 4.0

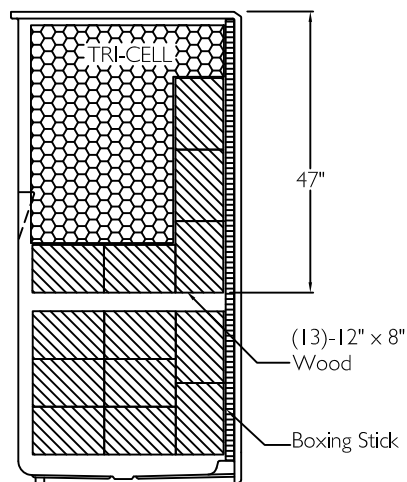
FRONT VIEW



SIDE VIEW



SIDE VIEW



Job Name	Approved By Print Name		Date	COMFORT DESIGNS	
Project No	Approved By Signature			Model No. SST 5038 SH 4.0" ANSI Type B	
Comfort Designs 435 Industrial Road Savannah, TN 38372 tel 800.443.7269 fax 731.925.4290 www.comfortdesignsbathware.com	Architect			Drawing No. SST 5038 SH 4.0 FBP Tri-Cell CR-BP	
	Engineer			Date Issued. 4-10-14	Drawing Rev. 5-29-14
	Rep			Material. Solid Surface	
	Wholesaler			Color.	
	Comments			Dimensions are in inches. Due to the nature of the materials dimensions may vary $\pm 1/2"$	