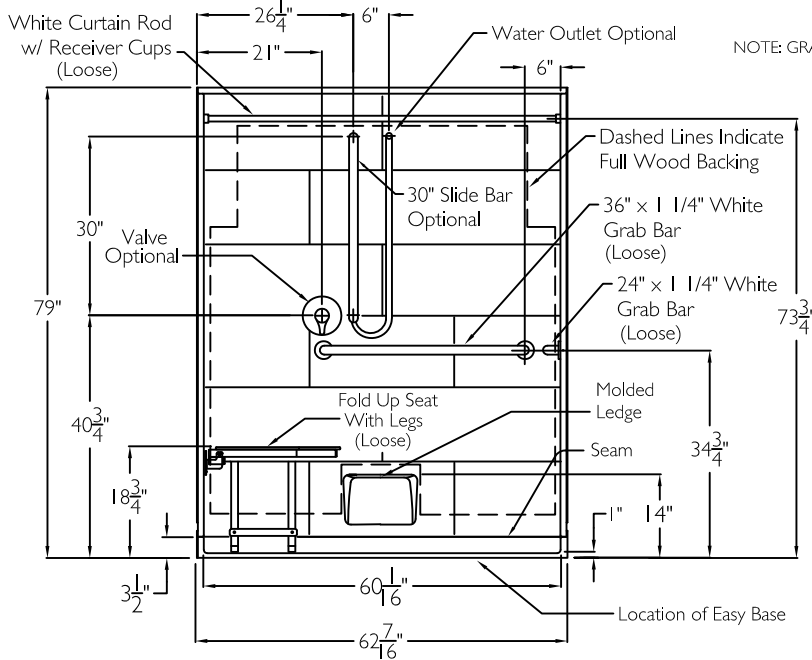
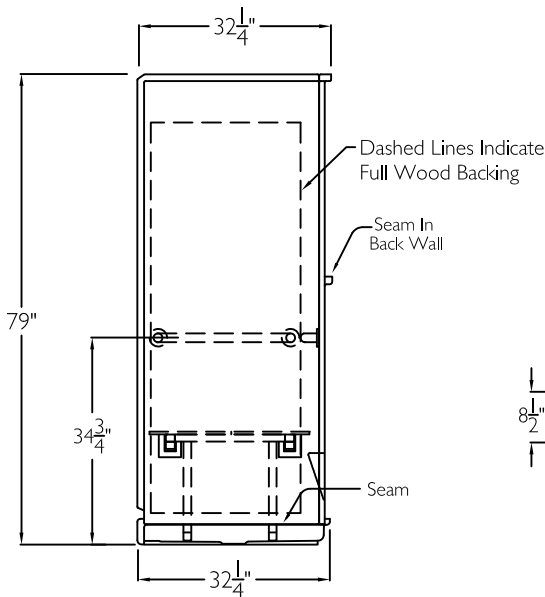


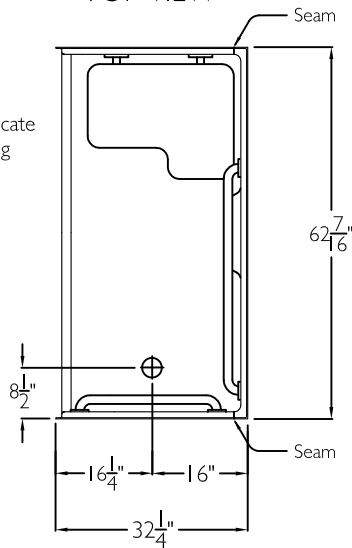
# FRONT VIEW



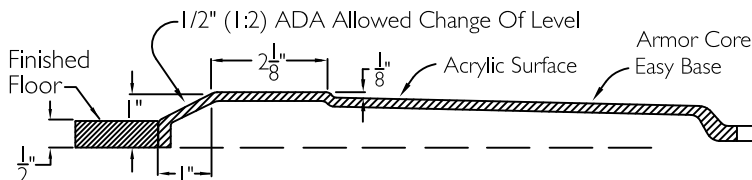
# SIDE VIEW



# TOP VIEW



# CROSS SECTION OF THRESHOLD



**cd**  
comfortdesigns

## SUBMITTAL

This shower enclosure shall be model XST 6232 BF 5P, left or right. Finished surface shall be of a sanitary grade applied acrylic. The base shall be attached to the sump in such a manner to form an integral part with an inner and outer coating of polyester resin. Unit construction shall be of a molded reinforced fiberglass with a 15% minimum fiberglass content.

The unit shall have outside dimensions of 62 7/16" x 32 1/2" x 79"  
The unit shall meet CSA B45.5-11, HUD-UM73, ADA, ANSI A117.1, and Home Innovation Research Lab.

## HANDED BY THE SEAT

ACCESSORIES SHIPPED LOOSE, TO BE FIELD INSTALLED BY OTHERS.

The enclosure shall be equipped with the following accessories:  
1) One 36" x 1 1/4" diameter white horizontal grab bar on the back wall, 2) One 24" x 1 1/4" diameter white horizontal grab bar on the side wall, both with 1 1/2" statute clearance, to be field secured by others with stainless steel bolts 3) 26" x 21" white HDPE fold up seat with legs, 4) One inch diameter, 18 gauge white curtain rod with receiver cups, Note: grab bars, seat and curtain rod are shipped loose, to be field installed by others, 5) Molded ledge low in the back wall, 6) 5 piece sectional design, 7) Full reinforced backing on walls, 8) Factory installed Easy Base Armor Core, 9) 1.0" COL threshold.

### OPTIONAL ACCESSORIES:

Factory Plumbing Install Option: ☐ YES ☐ NO

☐ PB Pressure Balancing Mixing Valve (ADA / ANSI)

☐ HH Hand held shower assembly with slide bar, vacuum breaker and 60" hose (ADA / ANSI)

THIS UNIT FEATURES THE OUTSIDE DIMENSION OF 62 5/8" OF OVERALL WIDTH. THIS DOES NOT ALLOW FOR FULL ENCLOSURE OF THE BOLTS AND NUTS USED TO SECURE THE BARS AND SEAT IN PLACE. THE BOLT AND NUT COMBINATION SHOULD NOT PROTRUDE MORE THAN 3/4" ON EITHER SIDE OF THE SHOWER WALLS. THIS MAY REQUIRE THE NEED TO NOTCH STUDS TO ALLOW BOLT CLEARANCE FOR A DRYWALL ENCLOSED FIRE WALL INSTALLATION. ADJUSTMENT OF THE WALL BOARD MAY BE NECESSARY TO PROVIDE CLEARANCE OF THE BOLT(S) WHILE MAINTAINING THE INTEGRITY OF THE DRYWALL ENCLOSED FIRE WALL ENCLOSURE.

NOTE: THIS UNIT WILL NOT ACCEPT A DOOR.

|  |                        |  |      |   |                      |
|--|------------------------|--|------|---|----------------------|
| Job Name   | Approved By Print Name |  | Date | COMFORT DESIGNS   |                      |
| Project No   | Approved By Signature  |  |      | Model No. XST 6232 BF 1.0 5P Package One  |                      |
| Comfort Designs<br>435 Industrial Road<br>Savannah, TN 38372<br>tel 800.443.7269<br>fax 731.925.4290<br>www.comfortdesignsbathware.com | Architect              |  |      | Drawing No. XST 6232 BF 1.0 5P WHBW WHSW HDP WCR Loose FWB Easy Base                    |                      |
|  | Engineer               |  |      | Date Issued. 6-23-14  | Drawing Rev. 4-14-17 |
|  | Rep                    |  |      | Material. Acrylic Surface   |                      |
|  | Wholesaler             |  |      | Color.  |                      |
|  | Comments               |  |      | Dimensions are in inches. Due to the nature of the materials dimensions may vary ± 1/2" |                      |
|  |                        |  |      |   |                      |