

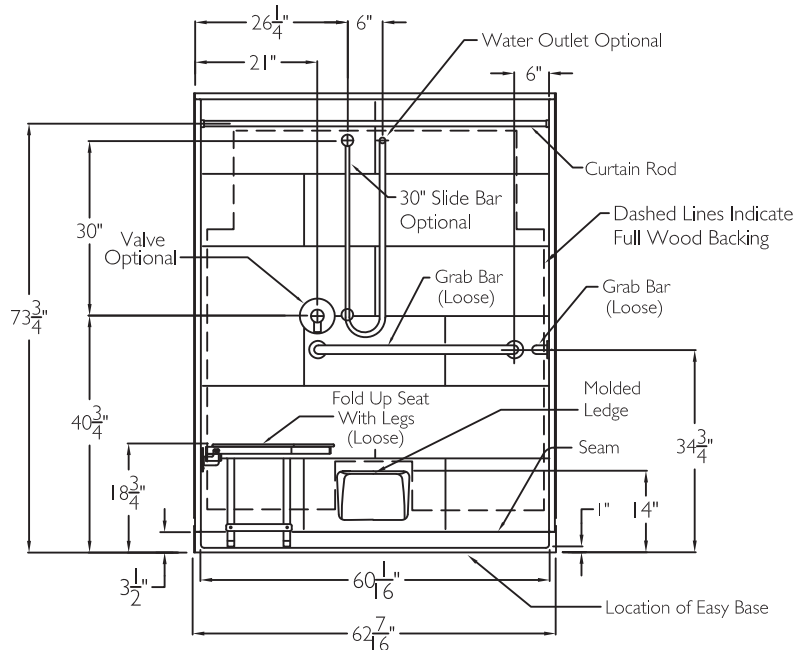
# CD Technical Data Sheet

## COMMERCIAL CODE COMPLIANT

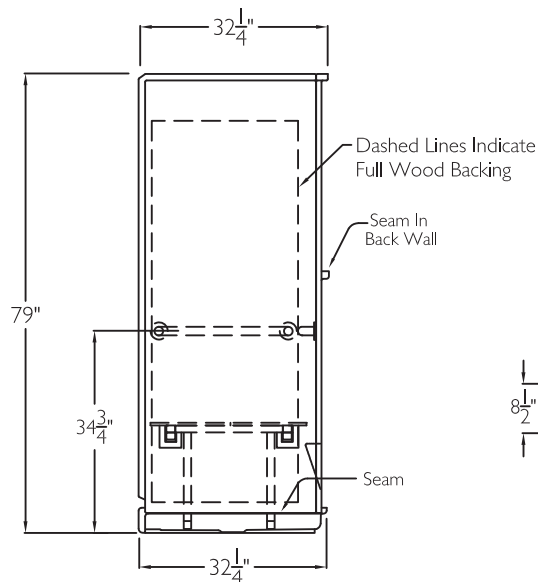
### XST6232BF 1.0 5P L/R

ADA/ANSI code compliant

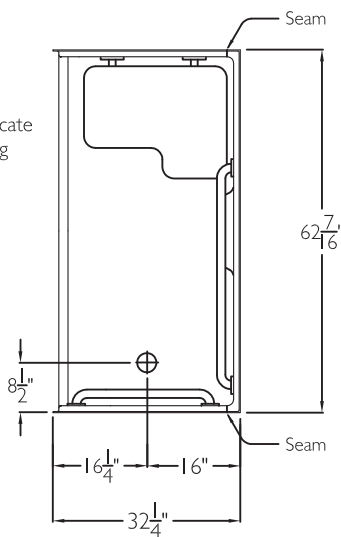
NOTE: For ADA/ANSI compliance, pressure balancing mixing valve, hand-held shower with slide bar, vacuum breaker and 60" hose must be installed per ADA/ANSI guidelines.



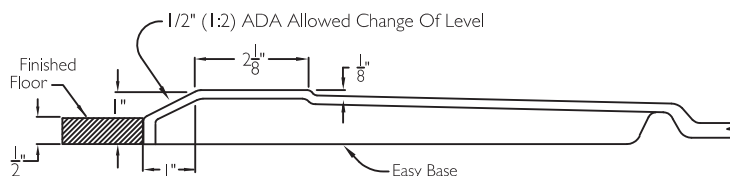
SIDE VIEW



TOP VIEW



CROSS SECTION OF THRESHOLD

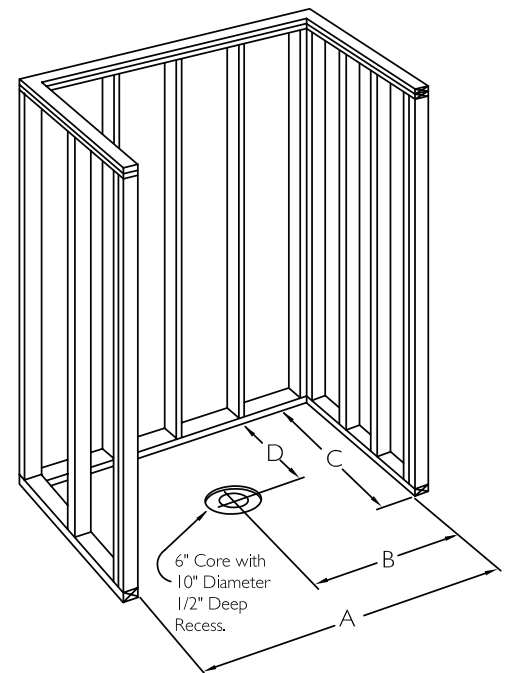


## TECHNICAL INFORMATION

OD 62.5" x 32.25" x 79"

ID 60" x 30" center point

HANDED BY Drain



## FRAMING DIMENSIONS

A 62.25" B 8.625"

C 32.25" D 16"

## ADDITIONAL CODES

CSA B45.5-11, HUD, BOCA, NAHB, IAPMOZ124-2011, Southern Building Codes. With fold-up seat and grab bar package complies with ADA and ANSI A117.1-2003.

**CODE COMPLIANT**  
Enhancing Livable Design

**cd**  
comfortdesigns

comfortdesignsbathware.com | 800.443.7269