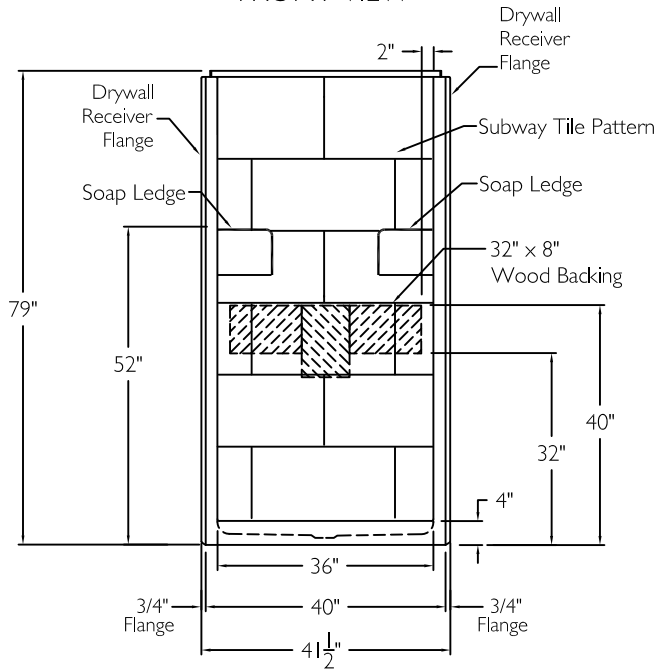
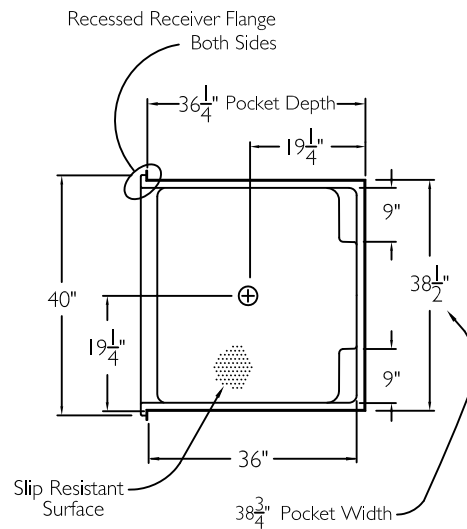


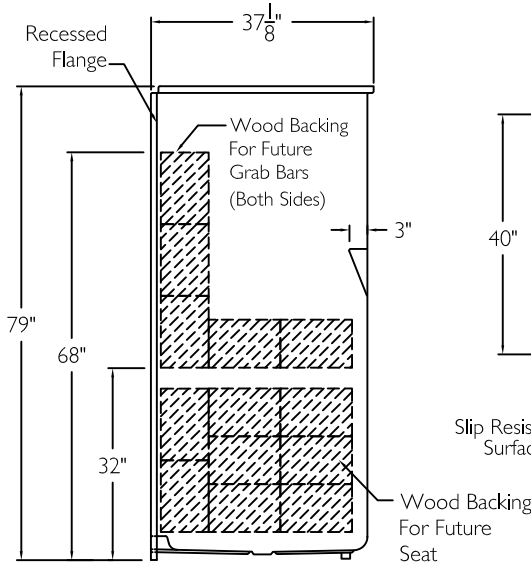
## FRONT VIEW



## TOP VIEW



## SIDE VIEW



## SUBMITTAL

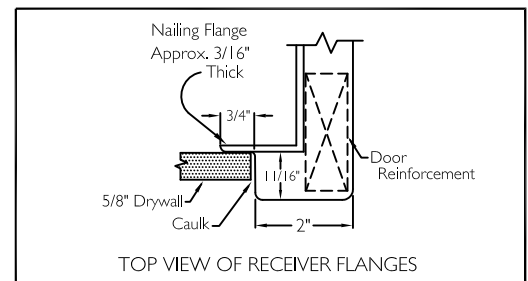
This shower enclosure shall be model XST 3838 SH 4.0 RRF center, right, or left. Finished surface shall be of a sanitary grade polyester gelcoat exhibiting a minimal thickness of 15 dry mils and a finished cured Barcoal hardness of 80-90 as tested with ASTM D-2583. Unit construction shall be of a molded reinforced fiberglass with a 15% minimum fiberglass content.

HANDED BY THE CENTER.

The unit shall have outside dimensions of 38 1/2" x 37 1/8" x 79" with a 4.0" threshold. The base shall be attached to the sump in such a manner to form an integral part with an inner and outer coating of reinforced polyester resin. The unit shall meet BOCA, ANSI Z124.1-2, Home Innovation Research Lab, UPC, CSA B45.5, ANSI Type B, and shall meet the requirements of the Southern Building Code.

The enclosure shall be equipped with the following accessories:

- 1) Wood backing on the back wall for future horizontal grab bar,
- 2) Wood backing on both side walls for future horizontal and vertical grab bars, (Future Grab Bars By Others),
- 3) Wood backing on both side walls for future fold up seat. (Future Seat By Others),
- 4) Molded corner soap ledges,
- 5) Subway tile finish on walls,
- 6) Molded recessed receiver flanges on both sides,
- 7) Center drain location,
- 8) 4.0" Threshold.



THIS UNIT FEATURES THE OUTSIDE DIMENSION OF 38 1/2" OF OVERALL WIDTH. THIS DOES NOT ALLOW FOR FULL ENCLOSURE OF THE BOLTS AND NUTS USED TO SECURE THE BARS AND SEAT IN PLACE. THE BOLT AND NUT COMBINATION SHOULD NOT PROTRUDE MORE THAN 3/4" ON EITHER SIDE OF THE SHOWER WALLS. THIS MAY REQUIRE THE NEED TO NOTCH STUDS TO ALLOW BOLT CLEARANCE FOR A DRYWALL ENCLOSED FIRE WALL INSTALLATION. ADJUSTMENT OF THE WALL BOARD MAY BE NECESSARY TO PROVIDE CLEARANCE OF THE BOLT(S) WHILE MAINTAINING THE INTEGRITY OF THE DRYWALL ENCLOSED FIRE WALL ENCLOSURE.

Job Name	Approved By Print Name	Date	COMFORT DESIGNS	
Project No	Approved By Signature		Model No. XST 3838 SH Tile 4.0 RRF ANSI Type B	
Comfort Designs 435 Industrial Road Savannah, TN 38372 tel 800.443.7269 fax 731.925.4290 www.comfortdesignsbathware.com	Architect		Drawing No. XST 3838 SH Tile 4.0 RRF ANSI Type B FBP	
	Engineer		Date Issued. 9-29-14	Drawing Rev. 11-11-14
	Rep		Material. Gelcoat	
	Wholesaler		Color.	
	Comments		Dimensions are in inches. Due to the nature of the materials dimensions may vary ± 1/2"	