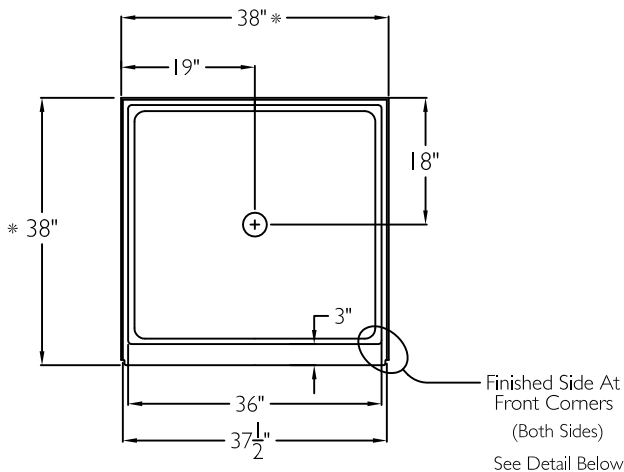
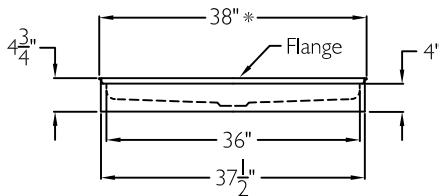


TOP VIEW

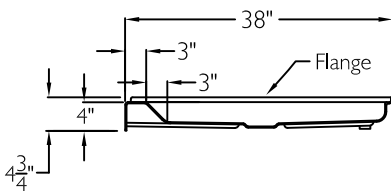


* Dimension includes 1/4" top perimeter flange.

FRONT VIEW



SIDE VIEW



SUBMITTAL

This shower enclosure shall be model XSB 3838 ANSI Type B, FHA Specification B Pan with center drain. Finished surface shall be of a sanitary grade gelcoat.

The unit shall have outside dimensions of 38" x 38" x 4 3/4".

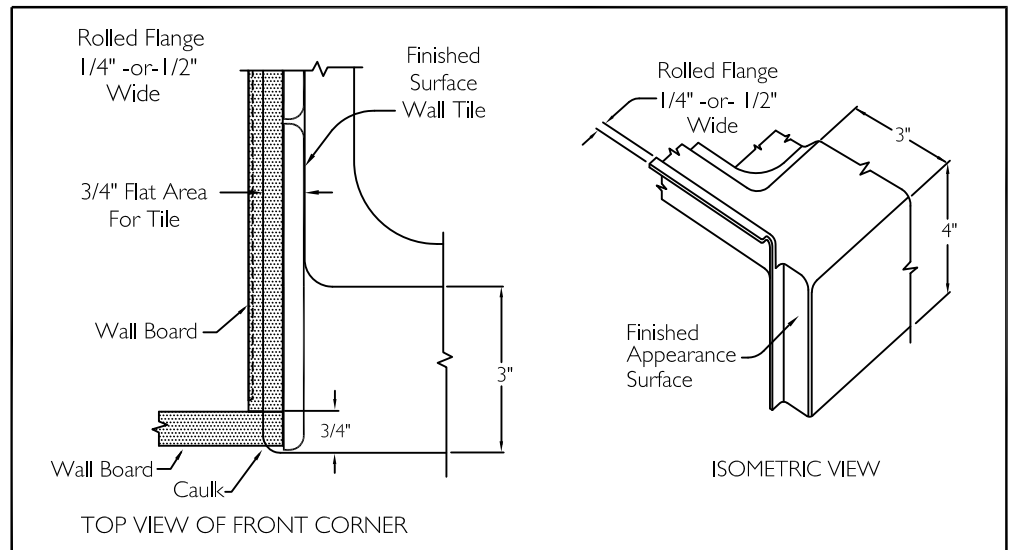
The unit shall meet ANSI Z124.1-2, BOCA, UPC, CSA, Home Innovation Research Lab, ANSI Type B, FHA Specification B, and meet the requirements of the Southern Building Code.

HANDED BY THE CENTER DRAIN

The enclosure shall be equipped with the following features:

- 1) Gelcoat Finish,
- 2) Center Drain Location,
- 3) 3/4" High Perimeter Mounting Flange, 1/4" Or 1/2" Wide,
- 4) No recessed flanges,
- 5) Finish surface on side at front (see detail below),
- 6) 4.0" Threshold.

Note: Unit available with 1/4" or 1/2" wide top perimeter flange.

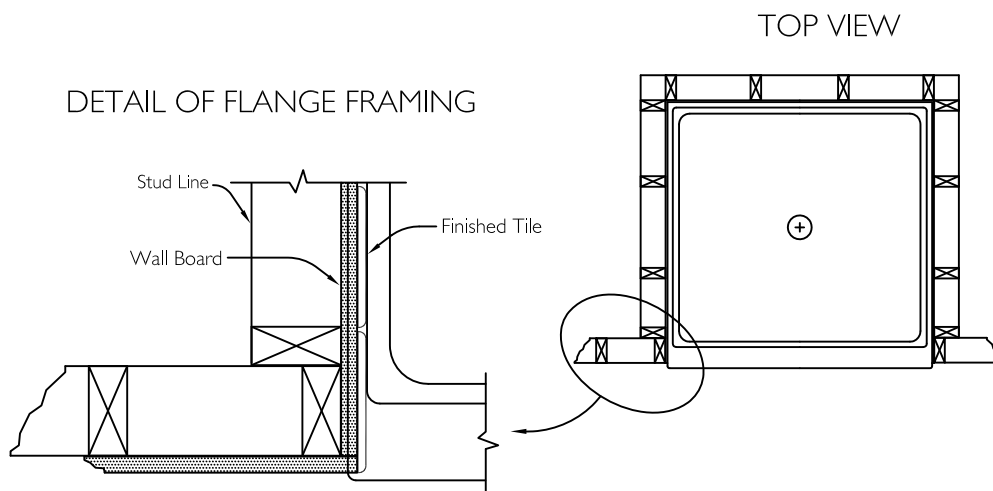


THIS UNIT FEATURES THE OUTSIDE DIMENSIONS OF 38" BY 38".
THE 38" WIDTH DIMENSION INCLUDES THE .25" ROLLED TOP FLANGE ON EACH SIDE.
FRAMING WIDTH SHOULD BE 38 1/4" WIDE. SEE PAGE 2 FOR FRAMING DETAILS.
FINISHED WALLS ABOVE THE SHOWER BASE BY OTHERS.

Job Name	Approved By Print Name		Date	COMFORT DESIGNS	
Project No	Approved By Signature			Model No. XSB 3838 4.0 ANSI Type B-FHA Spec B Pan-I No RRF	
Comfort Designs 435 Industrial Road Savannah, TN 38372 tel 800.443.7269 fax 731.925.4290 www.comfortdesignsbathware.com	Architect			Drawing No. XSB 3838 4.0 ANSI Type B-FHA Spec B Pan-I No RRF	
	Engineer			Date Issued. 5-7-12 Drawing Rev. 1-16-17	
	Rep			Material. Gelcoat	
	Wholesaler			Color.	
	Comments			Dimensions are in inches. Due to the nature of the materials dimensions may vary \pm 1/2"	

FRAMING DETAILS

XSB 3838 ANSI Type B - FHA Spec B Pan.

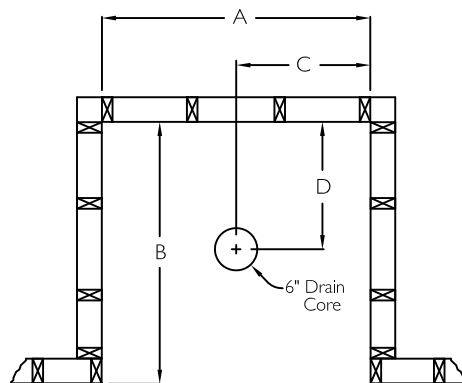


Refer to framing diagram below. Framing is shown 1/4" wider than pan to provide "wiggle room". Wall board is installed to the studs.

Wall board will sit on top of the rolled perimeter. Install recommended finished material ceramic or porcelain tile.

Finished wall material will be applied to the wall board on both sides and the back to create shower stall. Selection of finished materials may be maximum 1/2" thick to provide ANSI required minimum inside dimension of 36" width.

NOTE: Do not fill area between tile and vertical flange. This void provides a channel for water to migrate to the weep holes.



3838 ANSI B Shower is available in these configurations:

With 1/4" wide horizontal perimeter flange and no recessed flanges.

With 1/2" wide horizontal perimeter flange and no recessed flanges.

Refer to framing diagrams and dimensional matrix for proper framing enclosure size.

With 1/4" Perimeter Flange

A	B	C	D
38 1/4"	37 1/4"	19 1/8"	18"

With 1/2" Perimeter Flange

A	B	C	D
38 3/4"	37 1/2"	19 3/8"	18 1/4"

Job Name	Approved By Print Name	Date	COMFORT DESIGNS	
Project No	Approved By Signature		Model No.	XSB 3838 4.0 ANSI Type B-FHA Spec B Pan-I No RRF
Comfort Designs 435 Industrial Road Savannah, TN 38372 tel 800.443.7269 fax 731.925.4290 www.comfortdesignsbathware.com	Architect		Drawing No.	XSB 3838 4.0 ANSI Type B-FHA Spec B Pan-I No RRF
	Engineer		Date Issued.	5-7-12
	Rep		Drawing Rev.	1-16-17
	Wholesaler		Material.	Gelcoat
	Comments		Color.	
			Dimensions are in inches. Due to the nature of the materials dimensions may vary $\pm 1/2"$	