

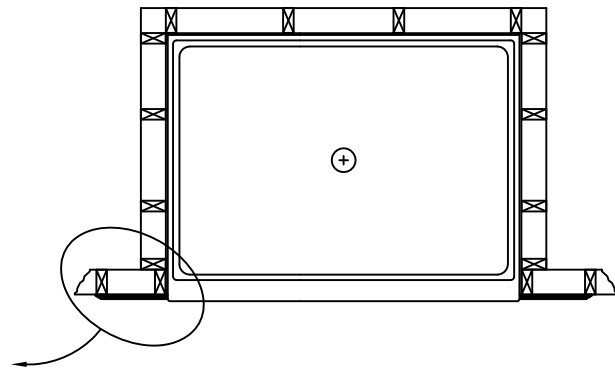
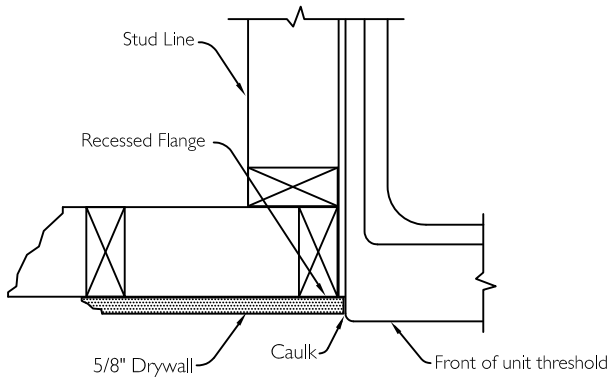
Job Name	Approved By Print Name		Date	COMFORT DESIGNS	
Project No	Approved By Signature			Model No. SSB 5038 4.0 ANSI Type B - FHA Spec B Pan-I No RRF	
Comfort Designs 435 Industrial Road Savannah, TN 38372 tel 800.443.7269 fax 731.925.4290 www.comfortdesignsbathware.com	Architect			Drawing No. SSB 5038 4.0 ANSI Type B - FHA Spec B Pan-I No RRF	
	Engineer			Date Issued. 4-20-16	Drawing Rev. I-I6-17
	Rep			Material. Solid Surface	
	Wholesaler			Color.	
	Comments			Dimensions are in inches. Due to the nature of the materials dimensions may vary $\pm 1/2"$	

## FRAMING DETAILS

SSB 5038 ANSI Type B - FHA Spec B Pan.

### TOP VIEW

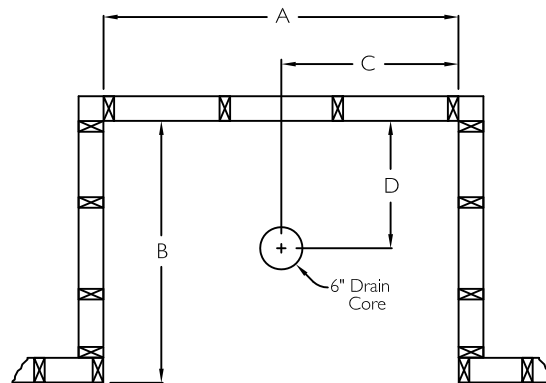
### DETAIL OF FLANGE FRAMING



5038 ANSI Type B - FHA Spec B Shower is available in these configurations:

With 1/4" wide horizontal perimeter flange and no recessed flanges.  
With 1/2" wide horizontal perimeter flange and no recessed flanges.

Refer to framing diagrams and dimensional matrix below for proper framing enclosure size.



### FRAMING WITHOUT RECESSED FLANGES

With 1/4" Perimeter Flange

A	B	C	D
50 1/4"	37 1/4"	25 1/8"	18"

With 1/2" Perimeter Flange

A	B	C	D
50 3/4"	37 1/2"	25 3/8"	18 1/4"

Job Name	Approved By Print Name	Date	COMFORT DESIGNS	
Project No	Approved By Signature		Model No.	SSB 5038 4.0 ANSI Type B - FHA Spec B Pan-I No RRF
Comfort Designs 435 Industrial Road Savannah, TN 38372 tel 800.443.7269 fax 731.925.4290 www.comfortdesignsbathware.com	Architect		Drawing No.	SSB 5038 4.0 ANSI Type B - FHA Spec B Pan-I No RRF
	Engineer		Date Issued.	4-20-16
	Rep		Drawing Rev.	I-16-17
	Wholesaler		Material.	Solid Surface
	Comments		Color.	
			Dimensions are in inches. Due to the nature of the materials dimensions may vary $\pm 1/2"$	