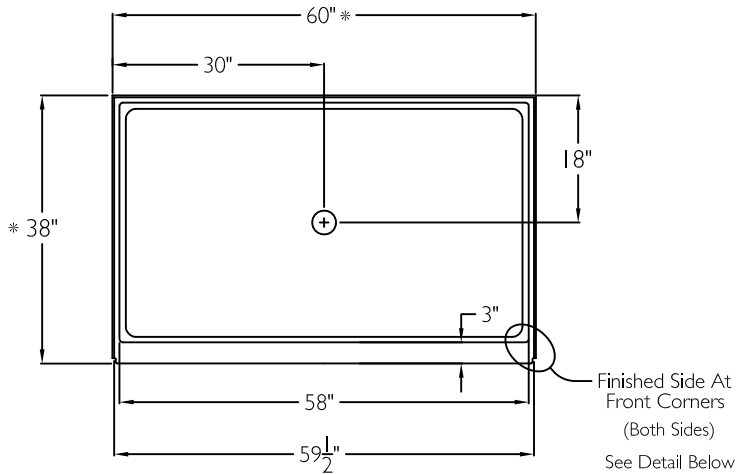
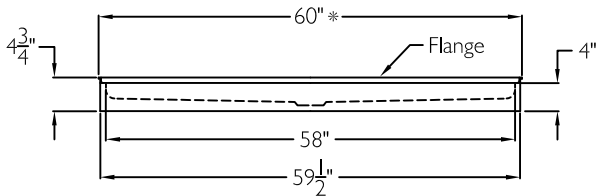


TOP VIEW

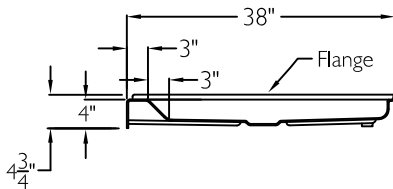


\* Dimension includes 1/4" top perimeter flange.

FRONT VIEW



SIDE VIEW



## SUBMITTAL

This shower enclosure shall be model SSB 6038 ANSI Type B, FHA Specification B Pan with center drain. Finished surface shall be of a sanitary grade solid surface exhibiting a minimal thickness of 55 dry mils and a finished cured Barcoal hardness of 80-90 as tested with ASTM D-2583. Unit construction shall be of a molded reinforced fiberglass with a 15% minimum fiberglass content.

The unit shall have outside dimensions of 60" x 38" x 4 3/4".

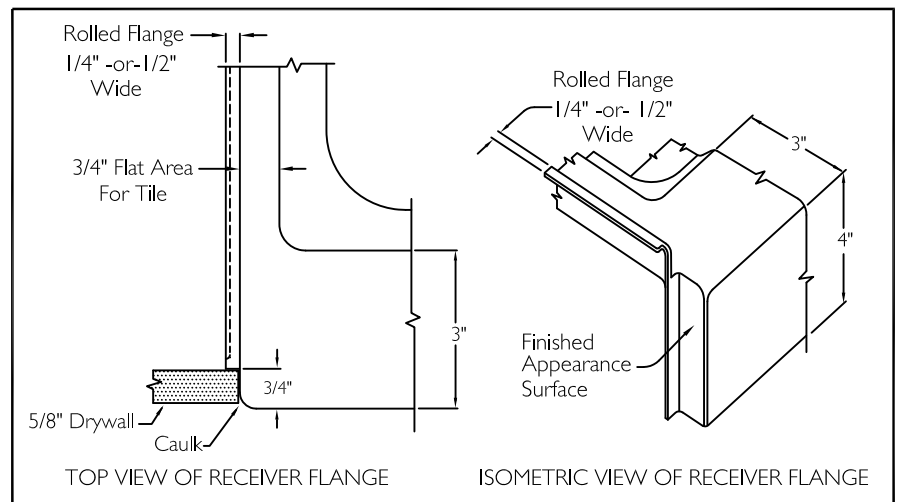
The unit shall meet ANSI Z124.1-2, BOCA, UPC, CSA, FHA Specification B, Home Innovation Research Lab, ANSI Type B, and shall meet the requirements of the Southern Building Code.

## HANDED BY THE CENTER DRAIN

The enclosure shall be equipped with the following features:

- 1) Solid Surface,
- 2) Center Drain Location,
- 3) 3/4" High Perimeter Mounting Flange, 1/4" Or 1/2" Wide,
- 4) No recessed flanges,
- 5) Finish surface on side at front (see detail below),
- 6) 4.0" Threshold.

Note: Unit available with 1/4" or 1/2" wide top perimeter flange.



THIS UNIT FEATURES THE OUTSIDE DIMENSIONS OF 60" BY 38".  
THE 60" WIDTH DIMENSION INCLUDES THE .25" ROLLED TOP FLANGE ON EACH SIDE.  
FRAMING WIDTH MUST BE AT LEAST 60 1/4" WIDE. SEE PAGE 2 FOR FRAMING DETAILS.  
FINISHED WALLS ABOVE THE SHOWER BASE BY OTHERS.

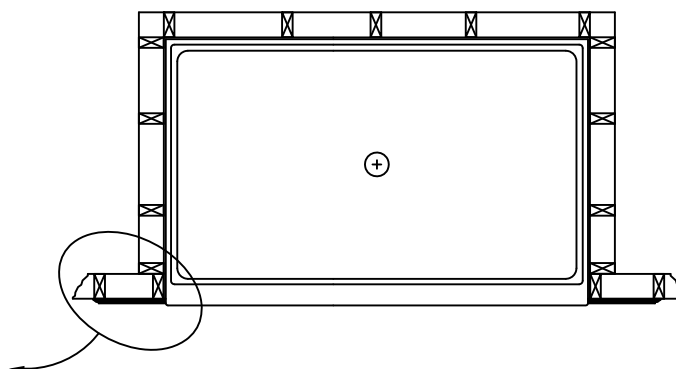
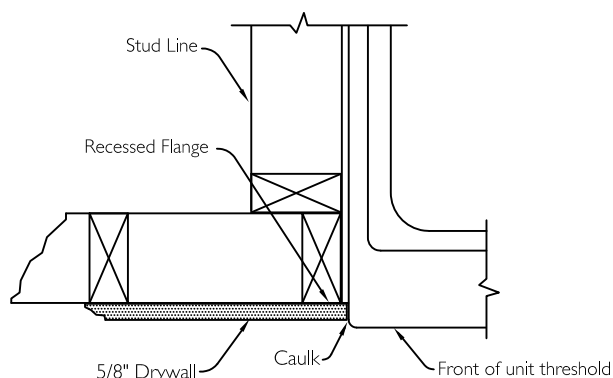
Job Name	Approved By Print Name	Date	COMFORT DESIGNS	
Project No	Approved By Signature		Model No. SSB 6038 4.0 ANSI Type B - FHA Spec B Pan-I No RRF	
Comfort Designs 435 Industrial Road Savannah, TN 38372 tel 800.443.7269 fax 731.925.4290 www.comfortdesignsbathware.com	Architect		Drawing No. SSB 6038 4.0 ANSI Type B - FHA Spec B Pan-I No RRF	
	Engineer		Date Issued. 4-21-16	Drawing Rev. 1-16-17
	Rep		Material. Solid Surface	
	Wholesaler		Color.	
	Comments		Dimensions are in inches. Due to the nature of the materials dimensions may vary $\pm 1/2"$	

## FRAMING DETAILS

SSB 6038 ANSI Type B - FHA Spec B Pan.

### TOP VIEW

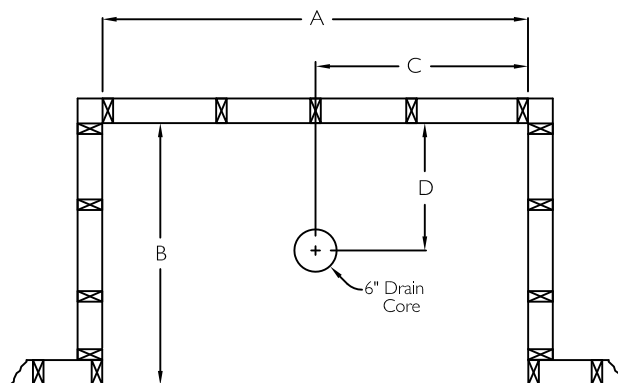
### DETAIL OF FLANGE FRAMING



6038 ANSI Type B - FHA Spec B Shower is available in these configurations:

With 1/4" wide horizontal perimeter flange and no recessed flanges.  
With 1/2" wide horizontal perimeter flange and no recessed flanges.

Refer to framing diagrams and dimensional matrix below for proper framing enclosure size.



### FRAMING WITHOUT RECESSED FLANGES

With 1/4" Perimeter Flange

A	B	C	D
60 1/4"	37 1/4"	30 1/8"	18"

With 1/2" Perimeter Flange

A	B	C	D
60 3/4"	37 1/2"	30 3/8"	18 1/4"

Job Name	Approved By Print Name	Date	COMFORT DESIGNS	
Project No	Approved By Signature		Model No.	SSB 6038 4.0 ANSI Type B - FHA Spec B Pan-I No RRF
Comfort Designs 435 Industrial Road Savannah, TN 38372 tel 800.443.7269 fax 731.925.4290 www.comfortdesignsbathware.com	Architect		Drawing No.	SSB 6038 4.0 ANSI Type B - FHA Spec B Pan-I No RRF
	Engineer		Date Issued.	4-21-16
	Rep		Drawing Rev.	1-16-17
	Wholesaler		Material.	Solid Surface
	Comments		Color.	
			Dimensions are in inches. Due to the nature of the materials dimensions may vary $\pm 1/2"$	