

TRADITIONAL SHOWER SYSTEMS SPECIFICATIONS



6K4834BG

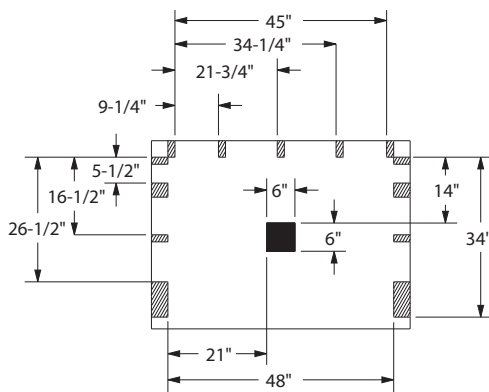
48" x 34" x 79" Shower System

- Leland Monitor® 17 Series shower components
- Pressure balance valve
- Hand shower and curved grab bars
- Low threshold shower base
- Three piece wall set with stud mount bracket system

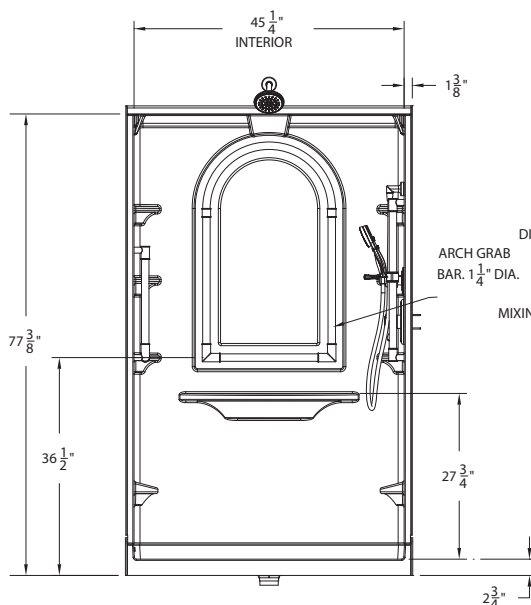
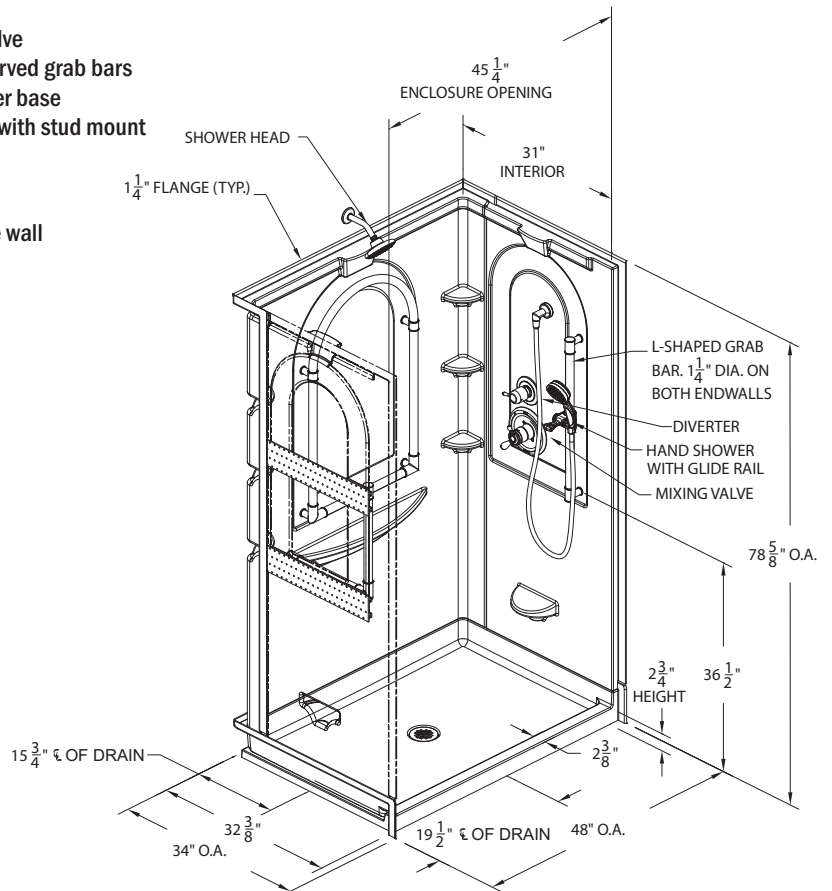
Valve: Right side wall
Hand-Held: Right side wall
Drain: Center



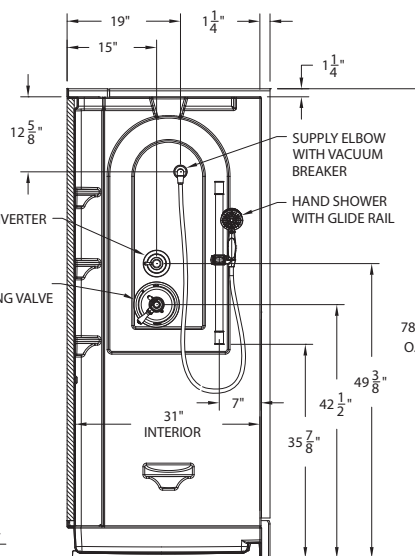
IAPMO/ANSI Z124.1.2
ASTM F446
ASTM E84; Class B



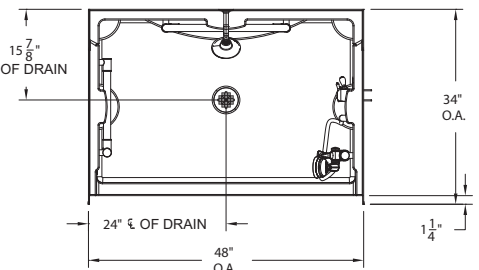
TRENCH DRAIN CUTAWAY & STUD PLACEMENT



FRONT VIEW



SIDE VIEW



TOP VIEW