

TRADITIONAL SHOWER SYSTEMS SPECIFICATIONS



6K6034BE

60" x 34" x 79" Shower System

- Grail® TempAssure® 17T Series shower components
- Hand shower and grab bars
- Zero Threshold shower base
- Three piece wall set with stud mount bracket system

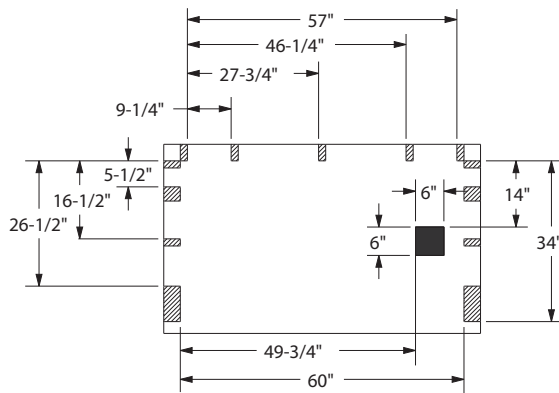
Valve: Left side wall

Hand-Held: Center back wall

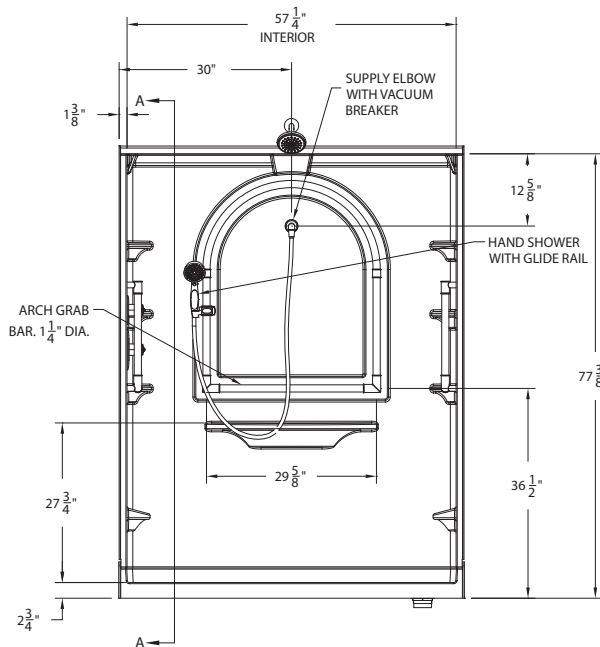
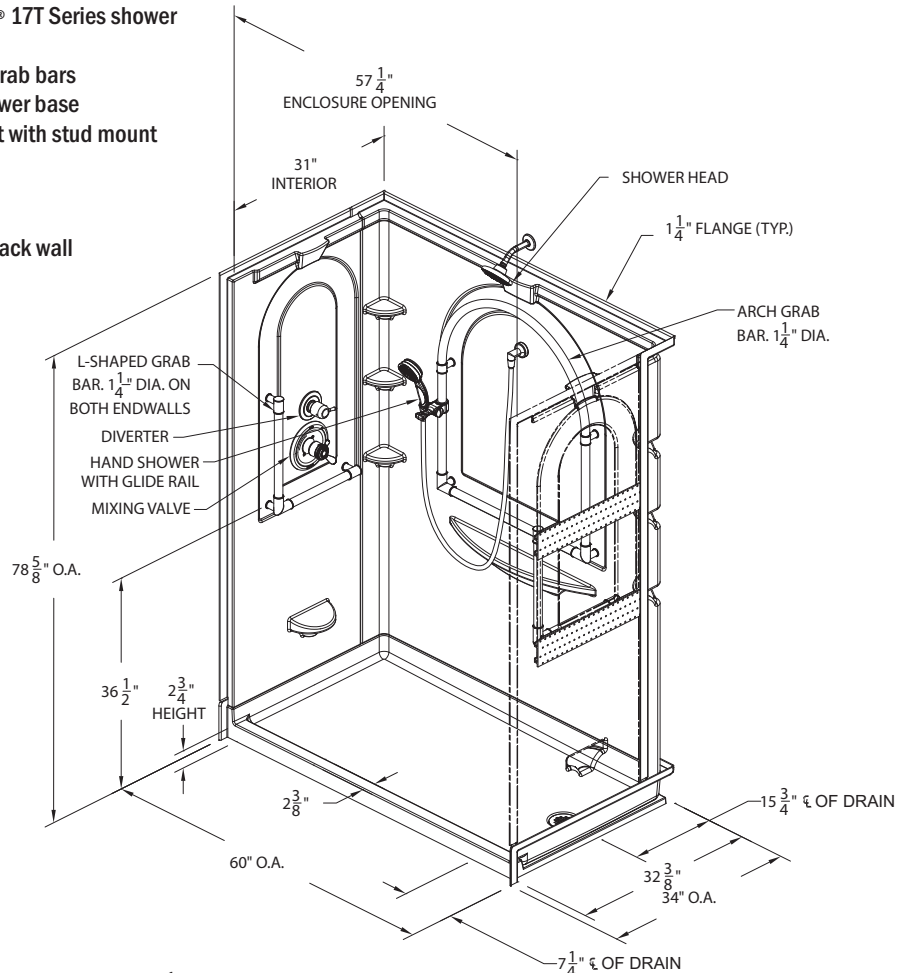
Drain: Right



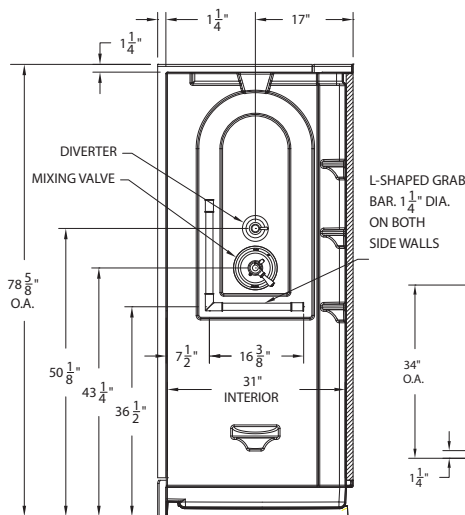
IAPMO/ANSI Z124.1.2
ASTM F446
ASTM E84; Class B



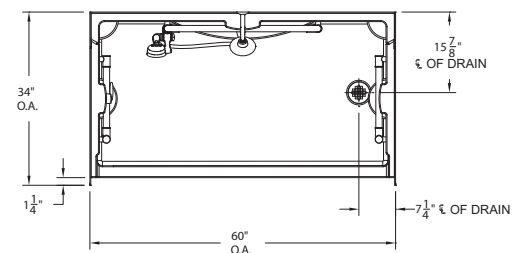
TRENCH DRAIN CUTAWAY & STUD PLACEMENT



FRONT VIEW



SIDE VIEW



TOP VIEW