

TRADITIONAL SHOWER SYSTEMS SPECIFICATIONS



6K6034BX

60" x 34" x 79" Shower System

- Leland Monitor® 17 Series shower components
- Pressure balance valve
- Hand shower and curved grab bars
- Low threshold shower base
- Three piece wall set with stud mount bracket system

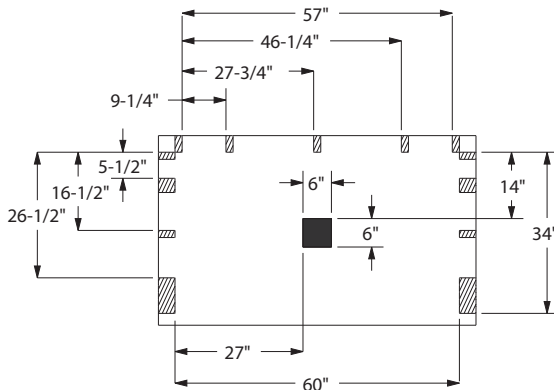
Valve: Left side wall

Hand-Held: Left side wall

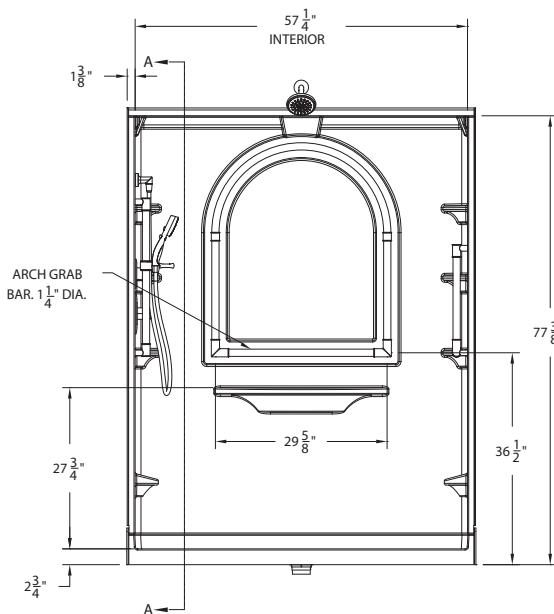
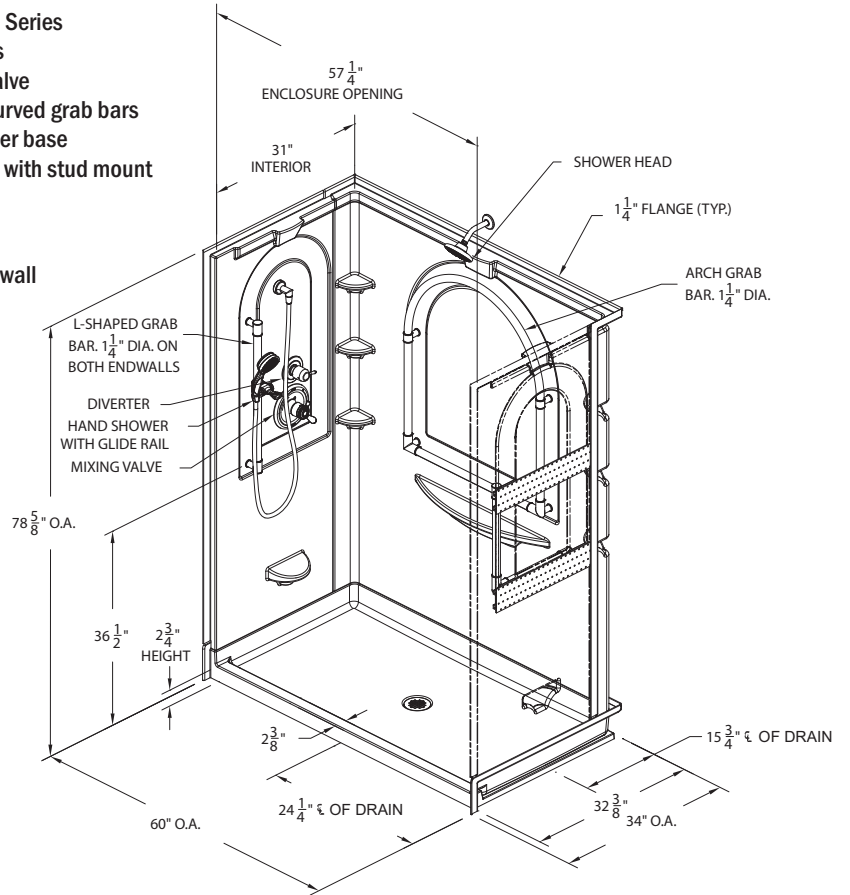
Drain: Center



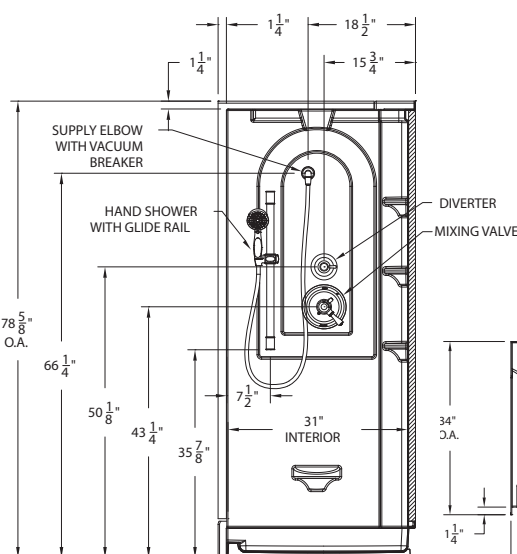
IAPMO/ANSI Z124.1.2
ASTM F446
ASTM E84; Class B



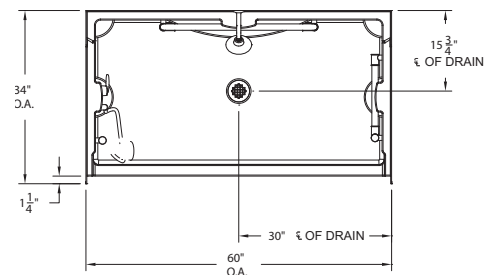
TRENCH DRAIN CUTAWAY & STUD PLACEMENT



FRONT VIEW



SIDE VIEW



TOP VIEW