

TRADITIONAL SHOWER SYSTEMS SPECIFICATIONS



6K6034DA

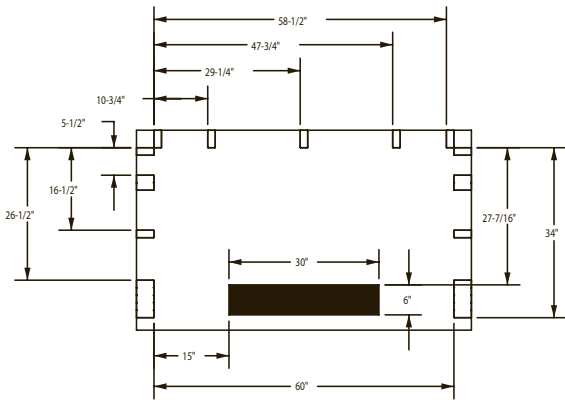
60" x 34" x 79" Shower System

- Leland Monitor® 17 Series shower components
- Pressure balance valve
- Hand shower and curved grab bars
- Zero threshold shower base
- Three piece wall set with stud mount bracket system
- Flip-up seat

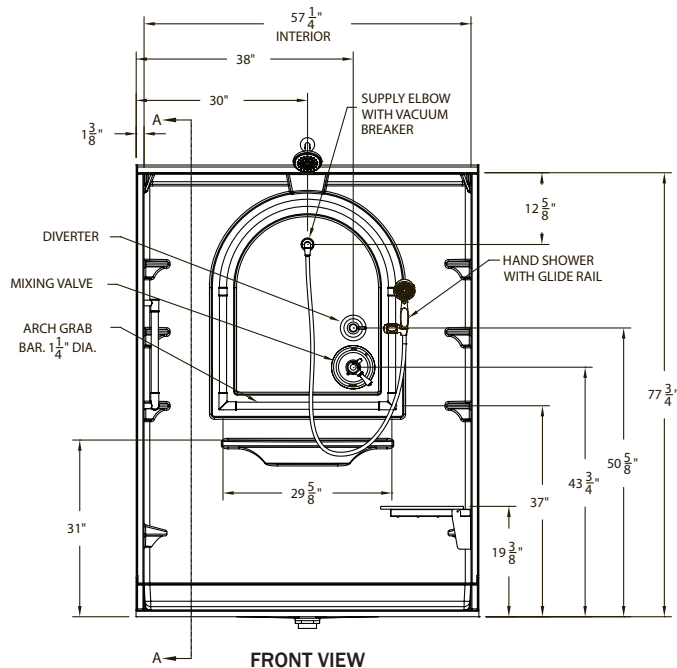
Valve: Right side of back wall
Hand-Held: Center back wall
Seat: Right side wall



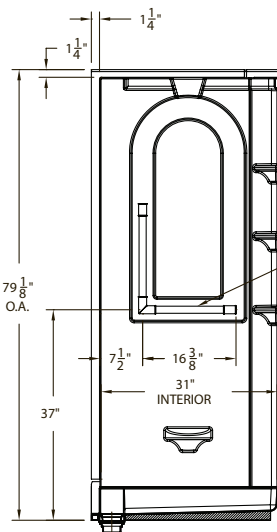
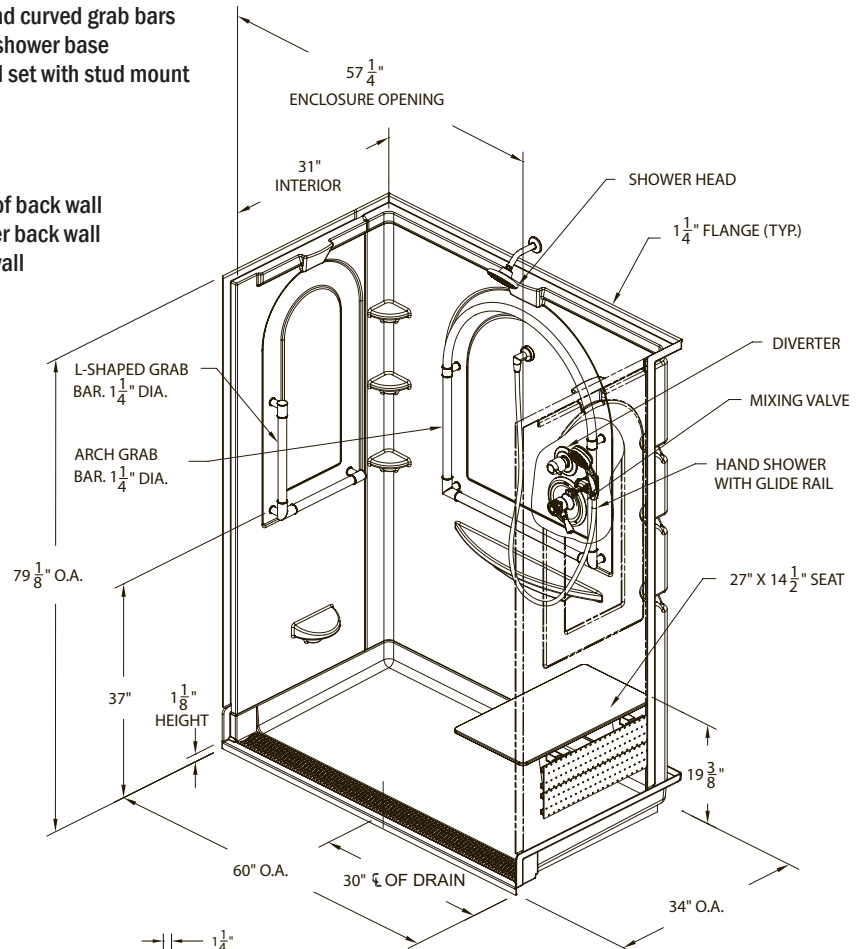
IAPMO/ANSI Z124.1.2-2005
ASTM F446-85 (2009)
ASTM F462-79 (2007)
ASTM E84-09a; Class C



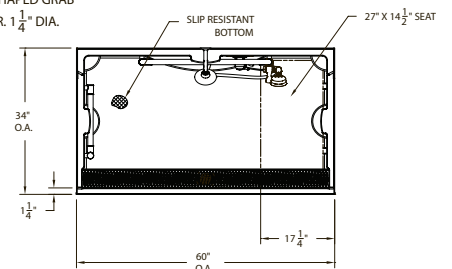
TRENCH DRAIN CUTAWAY & STUD PLACEMENT



FRONT VIEW



SIDE VIEW



TOP VIEW