

# TRADITIONAL SHOWER SYSTEMS SPECIFICATIONS



## 6K6034DC

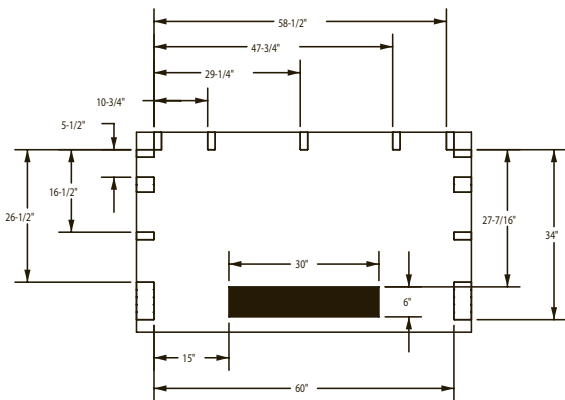
60" x 34" x 79" Shower System

- Leland Monitor® 17 Series shower components
- Pressure balance valve
- Hand shower and curved grab bars
- Zero threshold shower base
- Three piece wall set with stud mount bracket system

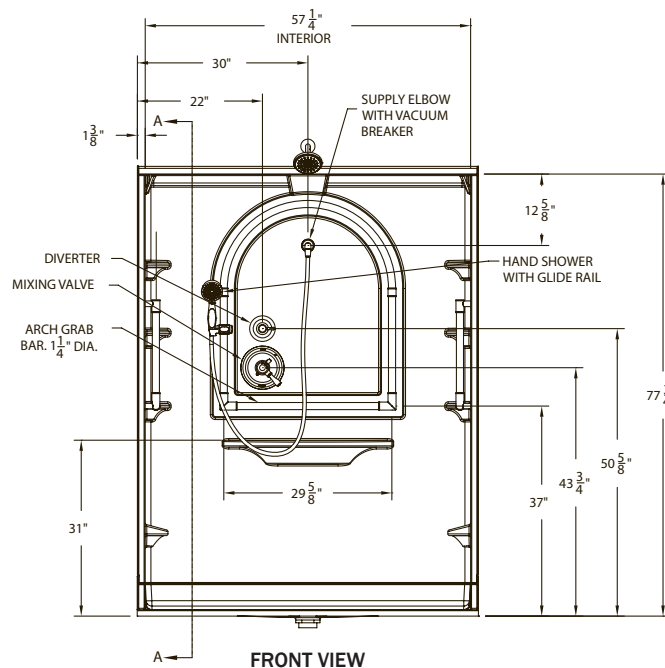
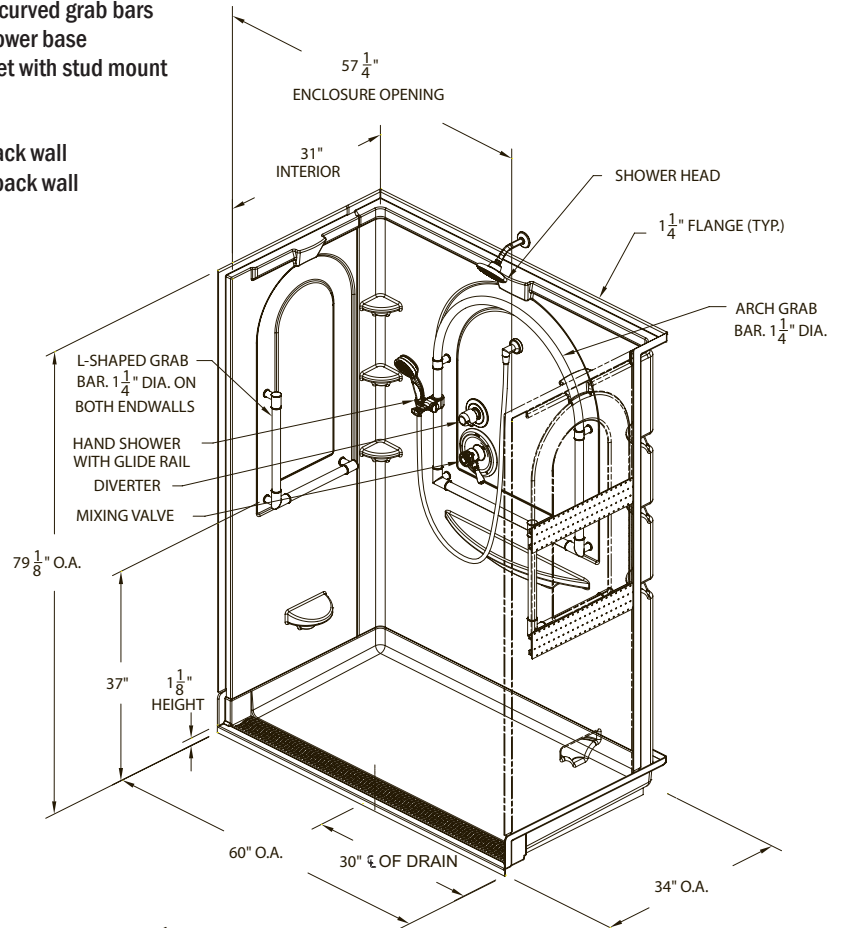
**Valve:** Left side of back wall  
**Hand-Held:** Center back wall



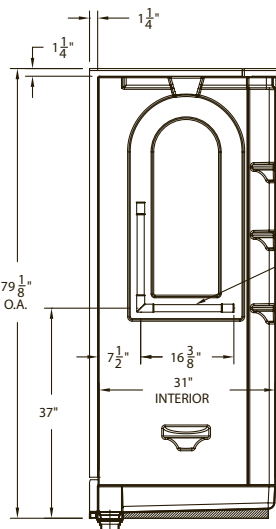
IAPMO/ANSI Z124.1.2-2005  
ASTM F446-85 (2009)  
ASTM F462-79 (2007)  
ASTM E84-09a; Class C



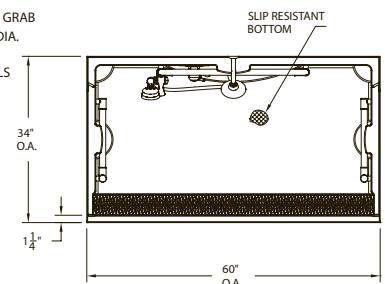
**TRENCH DRAIN CUTAWAY & STUD PLACEMENT**



**FRONT VIEW**



**SIDE VIEW**



**TOP VIEW**