

CONTEMPORARY SHOWER SYSTEMS SPECIFICATIONS



6K6339AC

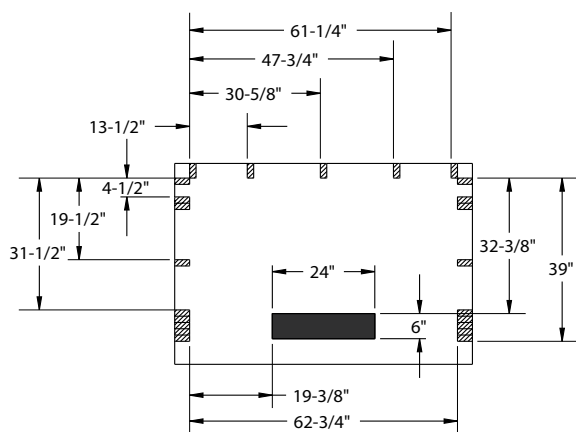
63" x 39" x 79" Shower System

- Grail® TempAssure® 17T Series shower components
- Hand shower and grab bars
- Zero Threshold shower base
- Three piece wall set with stud mount bracket system

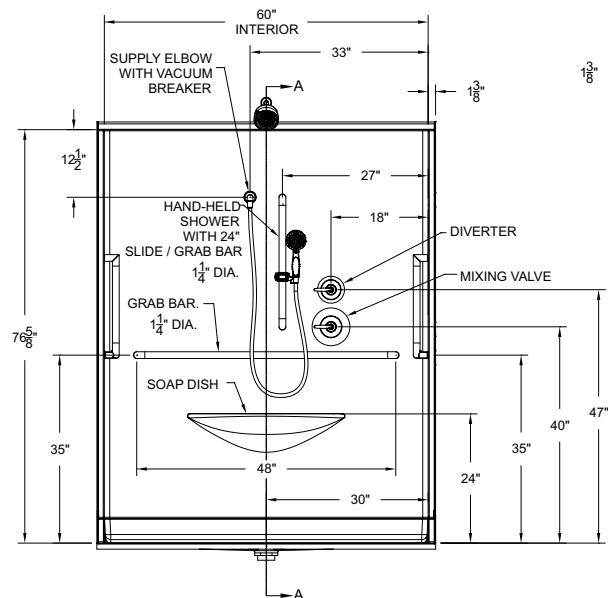
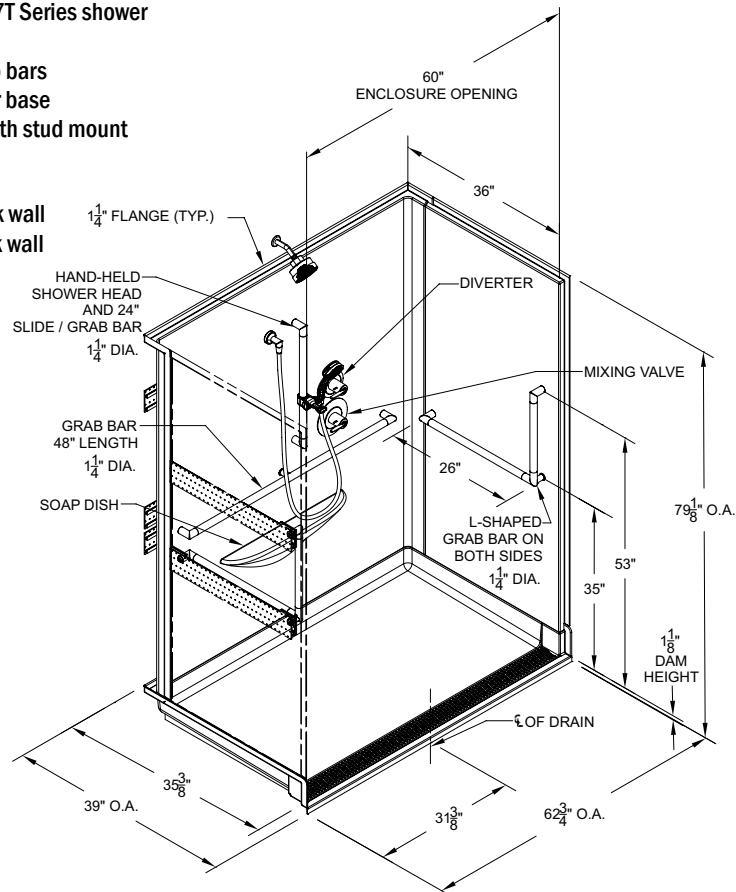
Valve: Right side of back wall
Hand-Held: Center back wall



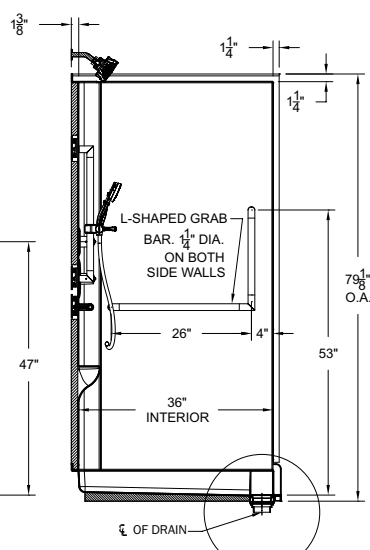
ICC/ANSI A117.1
ASTM F462
IAPMO/ANSI Z124.1.2
ASTM E84; Class B



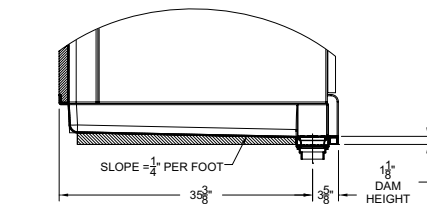
TRENCH DRAIN CUTAWAY & STUD PLACEMENT



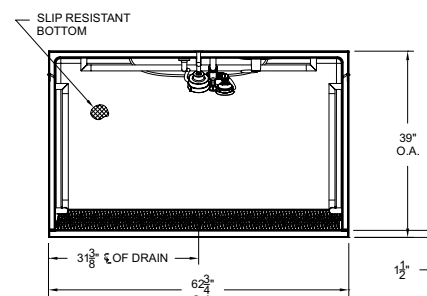
FRONT VIEW



SIDE VIEW



DETAIL VIEW



TOP VIEW