

# CONTEMPORARY SHOWER SYSTEMS SPECIFICATIONS



## 6K6339AG

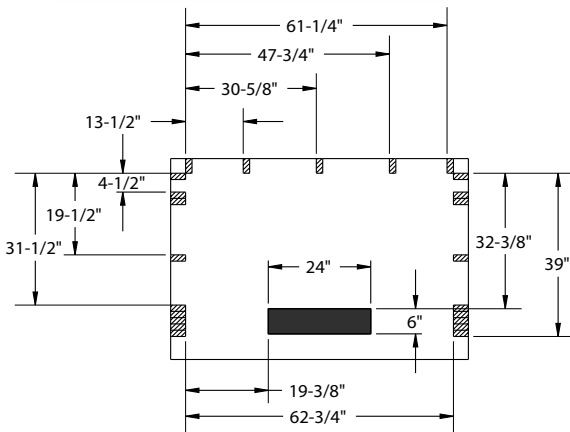
63" x 39" x 79" Shower System

- Grail® TempAssure® 17T Series shower components
- Hand shower and grab bars
- Zero Threshold shower base
- Three piece wall set with stud mount bracket system
- Flip-up seat

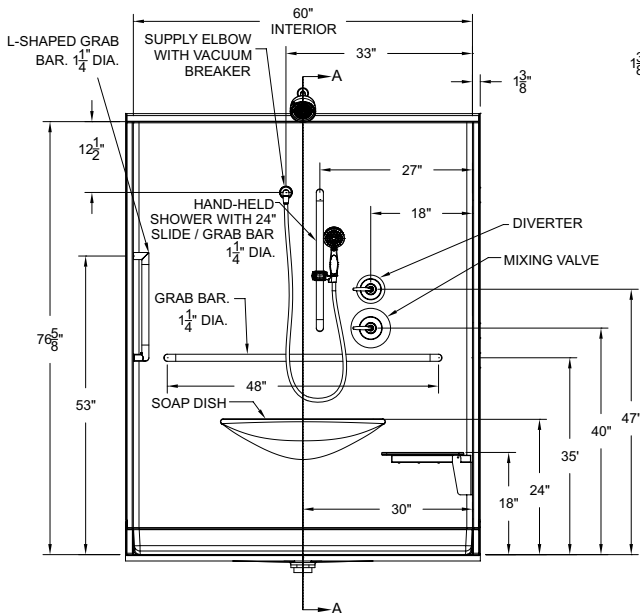
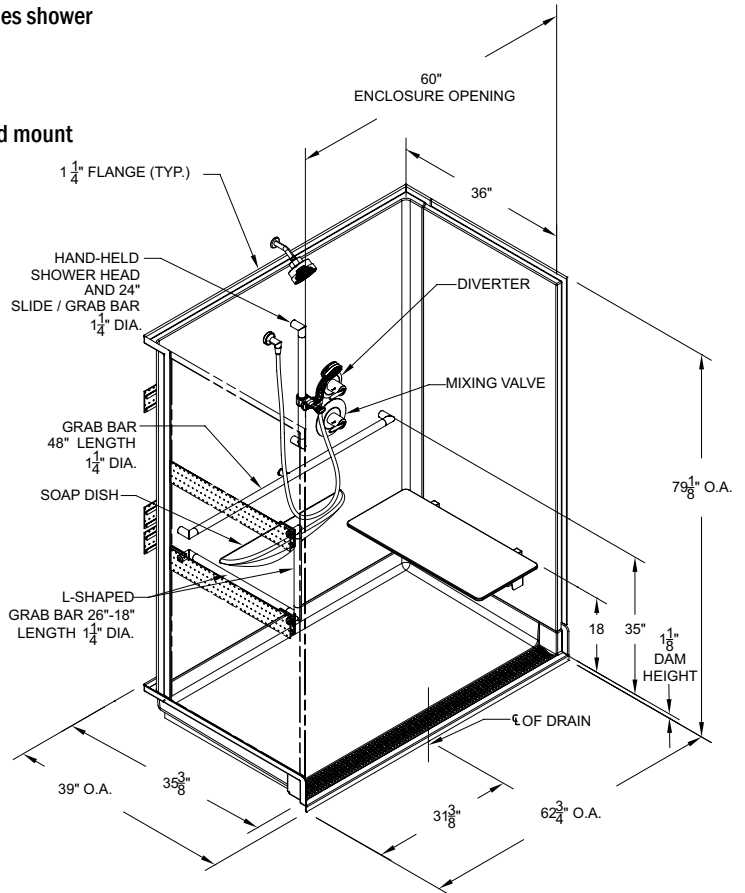
**Valve:** Right side of back wall  
**Hand-Held:** Center back wall



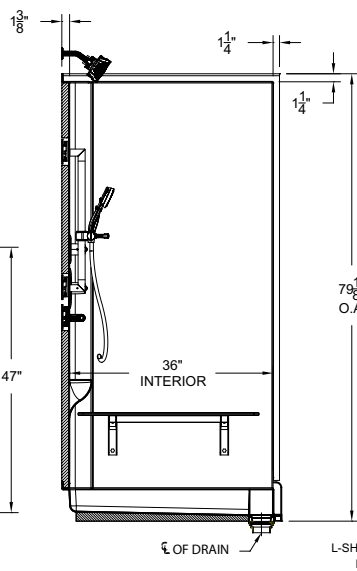
ICC/ANSI A117.1  
ASTM F462  
IAPMO/ANSI Z124.1.2  
ASTM E84; Class B



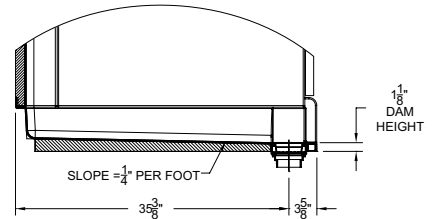
**TRENCH DRAIN CUTAWAY & STUD PLACEMENT**



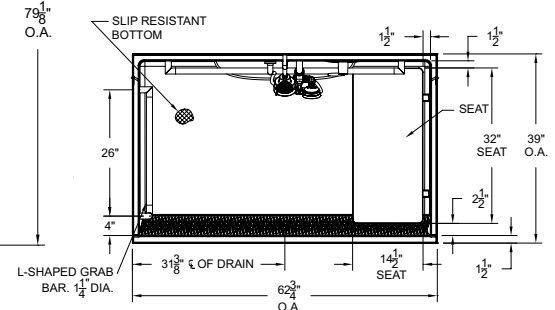
**FRONT VIEW**



**SECTION A-A**  
**SIDE VIEW**



**DETAIL VIEW**



**TOP VIEW**