



Hardwire Operated - Single Hole Deck Mount Lavatory Faucet - Surface Mount Control Box

590TPA0150

Description

This high-quality faucet offers a flow rate of 0.5 gpm (1.9 liters per minute), delivering a consistent laminar spray. Its innovative Proximity® Sensing Technology enables touchless operation, promoting convenience and minimizing the spread of germs. Powered by a hardwire operation with 24 VAC, the faucet is not only efficient but also durable. With a sleek chrome finish, deck mount installation, and a cast hi-rise spout type, this faucet combines functionality with modern aesthetics. The control box, featuring a surface mount box (available only as a complete model), houses the solenoid and controller, completing a comprehensive and sophisticated solution for any setting.

Specification

- Flow Rate: 0.5 gpm (1.9 L/min)
- Spray Type: Laminar
- Sensor Type: Proximity® Sensing Technology
- Power Supply: Hardwire Operated (24 VAC)
- Finish: Chrome
- Mounting Type: Deck Mount
- Spout Type: Cast Hi-Rise
- Control Box: 0 = Surface Mount Box (available as complete model ONLY)
- Solenoid and Controller in Surface Mount Housing

Features

- Hands-free Operation - Allows for touchless operation, promoting hygiene and convenience
- Proximity® Sensing Technology - No visible sensor, the spout is the sensor
- Adjustable Sensing Range and Timeout - Customize sensing range and timeout settings based on specific preferences and needs
- Serviceable Filter Screen - Equipped with a conveniently serviceable filter screen located upstream of the solenoid valve
- Single Hole Installation

Required Accessories

- 063271A - AC Filter for up to 5 Proximity® Faucets
- 063267A - AC Filter & Transformer 20VA, 120/24Vac for up to 5 Proximity® Faucets
- 060704A - Transformer 20VA, 120/24Vac for up to 5 Units
- 060771A - Transformer 40VA, 120/24Vac for up to 10 Units
- R2570-MIXLF or R3270-MIXLF - Thermostatic Mixing Valve Required for Surface Mount Box

Optional Accessories

- 061159A - 4" (102 mm) Cover Plate
- 061160A - 8" (203 mm) Cover Plate
- 061256A - 36" (910 mm) Sensor Extension Cable
- 063268A - Battery Backup Assembly for Surface Mount Box
- 060651A - 3 Position Switch



Complies With

- ASME A112.18.1/CSA B125.1
- ICC/ANSI A117.1
- Verified compliant with 0.25% weighted average Pb content regulations



(Contact Delta Representative for State and/or Local Approvals)

Operation

- Hands-Free Operation - No visible sensor, the spout is the sensor
-Water flows when sensing is activated - Water flow stops promptly upon deactivation of sensing
- Adjustable Auto Shut-off - The auto shut-off feature is adjustable, with a factory setting of 45 seconds
- Adjustable Sensing Distance - Sensing distance can be customized from 3" to 15" (76 to 381 mm) - The factory setting is 3" (76 mm)
- Metering Mode - Offers selectable flow times ranging from 7 seconds to 4 minutes - Factory setting is off
- Periodic Rinse Feature - Time for periodic rinse is adjustable in 6-hour increments, up to 2 days - Selectable rinsing lengths range from 10 to 180 seconds - Factory setting is off
- Single Tempered Water Supply Requirement - Ensures optimal operation by necessitating a single tempered water supply
- Maximum combination of 5 faucets can be connected to 1 AC Filter

Notes

- Designed to accommodate routine 180°F (82°C) disinfection cycles lasting up to 10 minutes
- Use only Delta® supplied cable sets. Using non-Delta® cables, cutting or splitting any components will void the warranty
- Compatibility: Proximity® models are not suitable for use on enamel-covered metal sinks
- Use 2-conductor 18 AWG wire for all electrical connections
- Use Delta® Commercial approved AC filters and transformers

NOTICE Dimensions are for reference only. Measurements may vary $\pm 0.25"$ (6 mm).

Max. flow rates are at 60 psi (414 kPa).

WaterSense® is a registered trademark of the U.S. Environmental Protection Agency.

Delta Faucet Company reserves the right (1) to make changes in specifications and materials, and (2) to change or discontinue models, both without notice or obligation. See current full-line price book for finish options and product availability.

Masco Canada Limited
350 South Edgeware Rd, St Thomas, Ontario, Canada N5P 4L1
1-800-387-8277

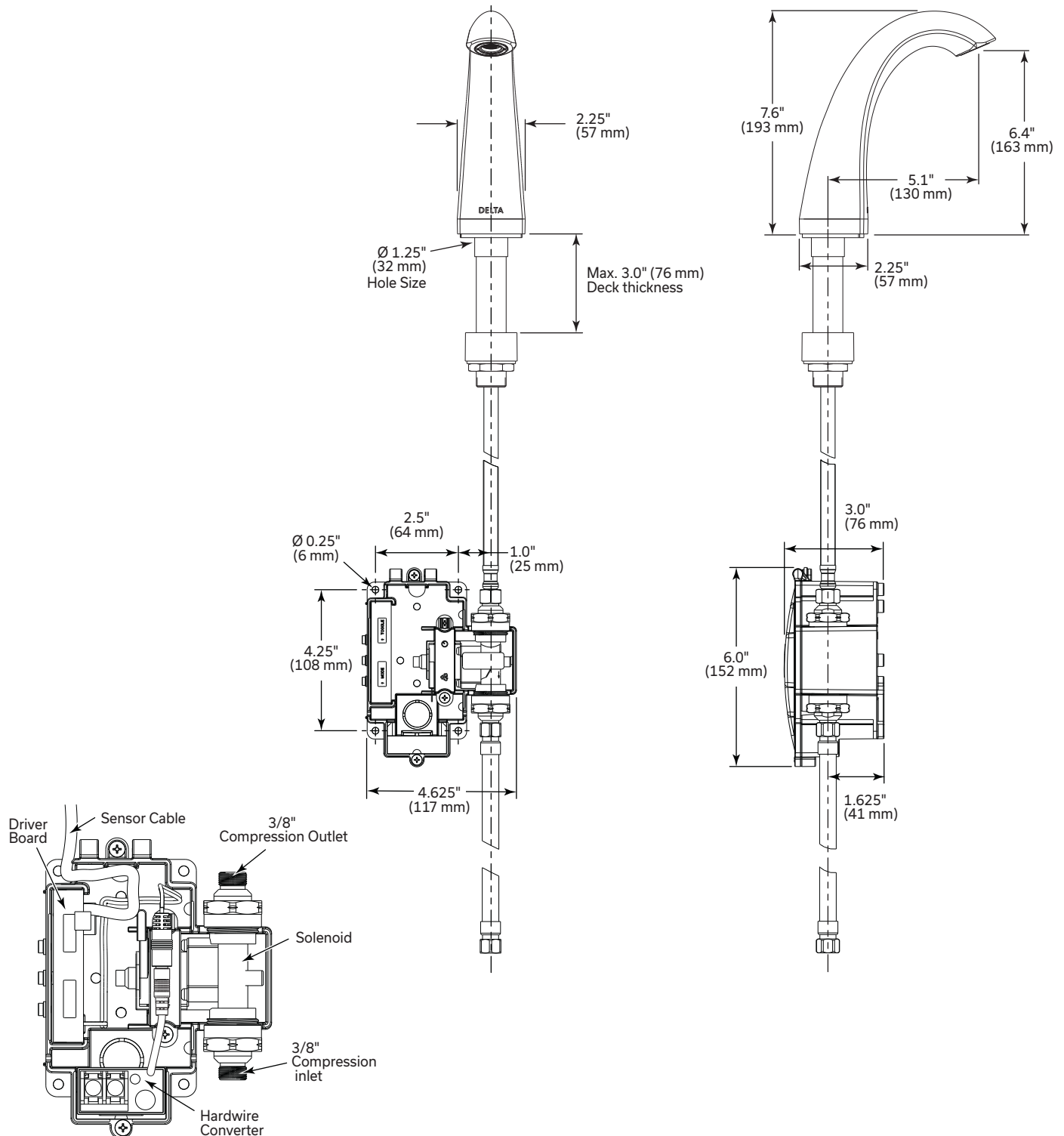
590TPA0150

This spec was produced on April 30, 2024.



Hardwire Operated - Single Hole Deck Mount Lavatory Faucet - Surface Mount Control Box

590TPA0150



NOTICE Dimensions are for reference only. Measurements may vary $\pm 0.25"$ (6 mm).

Max. flow rates are at 60 psi (414 kPa).

WaterSense® is a registered trademark of the U.S. Environmental Protection Agency.

Delta Faucet Company reserves the right (1) to make changes in specifications and materials, and (2) to change or discontinue models, both without notice or obligation. See current full-line price book for finish options and product availability.

Masco Canada Limited
350 South Edgeware Rd, St Thomas, Ontario, Canada N5P 4L1
1-800-387-8277

590TPA0150

This spec was produced on April 30, 2024.