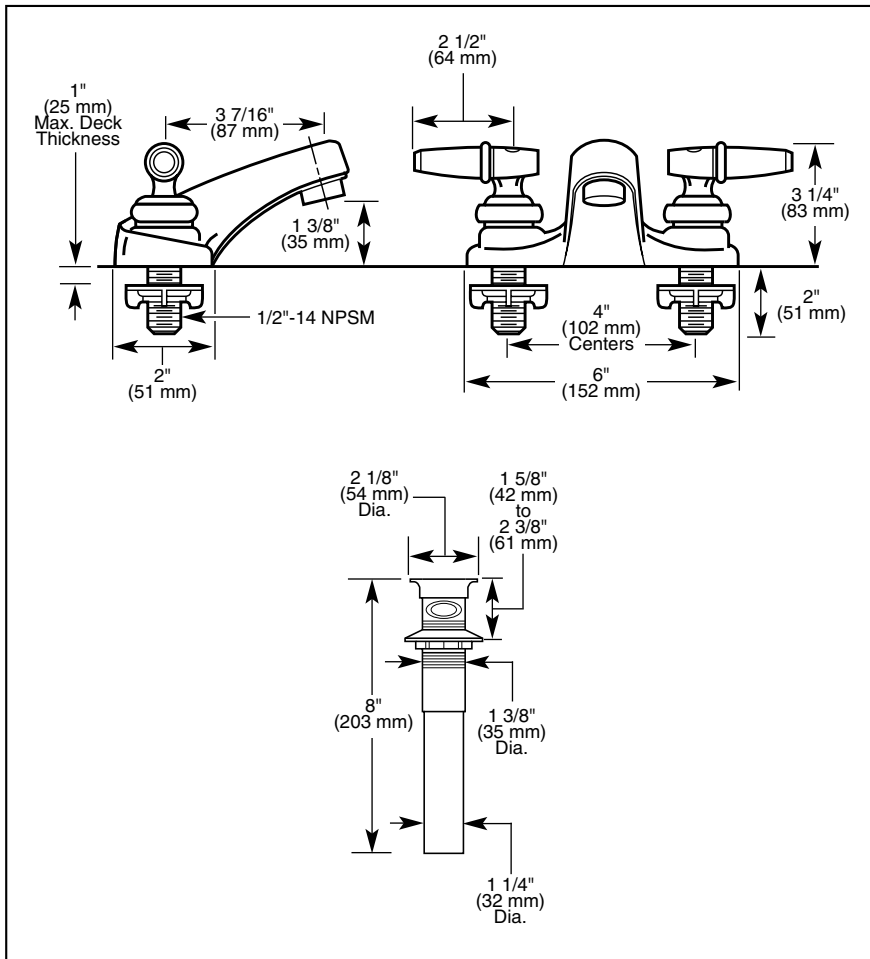


Submitted Model No.: _____

Specific Features: _____



LAVATORY FAUCETS

- Two Handle
- Deck Mount
- 2 Hole Sink Applications
- 4" (102 mm) Centerset

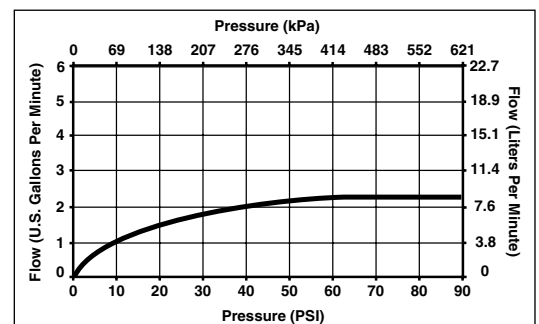




COMPLIES WITH:

- ASME A112.18.1
- CSA B125
- Indicates ADA compliance to CABO/ANSI A117.1
- IAPMO Listed
- CSA Certified

STANDARD SPECIFICATIONS:

- Two handle lavatory deck faucets for exposed mounting on two hole sinks.
- 4" (102 mm) centerset.
- Solid brass fabricated body.
- 3 7/16" (87 mm) long spout.
- No lift rod hole.
- Vandal resistant brass lever handles. Red/blue colored graphics indicate hot/cold temperature.
- Control mechanism shall be of the rotating cylinder type with stainless steel plate and 1/4 turn stops. Replaceable non-metallic seats operate in stainless steel lined sockets.
- Hot and cold stems are interchangeable.
- 1/2"-14 NPSM threaded male inlet shanks.
- Vandal resistant aerator or spray outlet.



Standard Features	2523-HDF	2523-LGHDF
Washerless	◆	◆
4" (102 mm) Centerset	◆	◆
Two Hole Installation	◆	◆
Three Hole Installation	◆	◆
3 7/16" (87 mm) Long Spout	◆	◆
No Lift Rod Hole	◆	◆
2.2 gpm (8.3 L/min) Vandal Resistant Aerator	◆	◆
Vandal Resistant Brass Lever Handles with Red/Blue Indicators		
1/4 Turn Handle Stops	◆	◆
1/2"-14 NPSM Threaded Male Inlet Shanks	◆	◆
Metal Grid Strainer	◆	
Chrome Finish	◆	◆



Indianapolis, Indiana 46280
 A Division of Masco Corporation of Indiana
 © 2002 Masco Corporation of Indiana