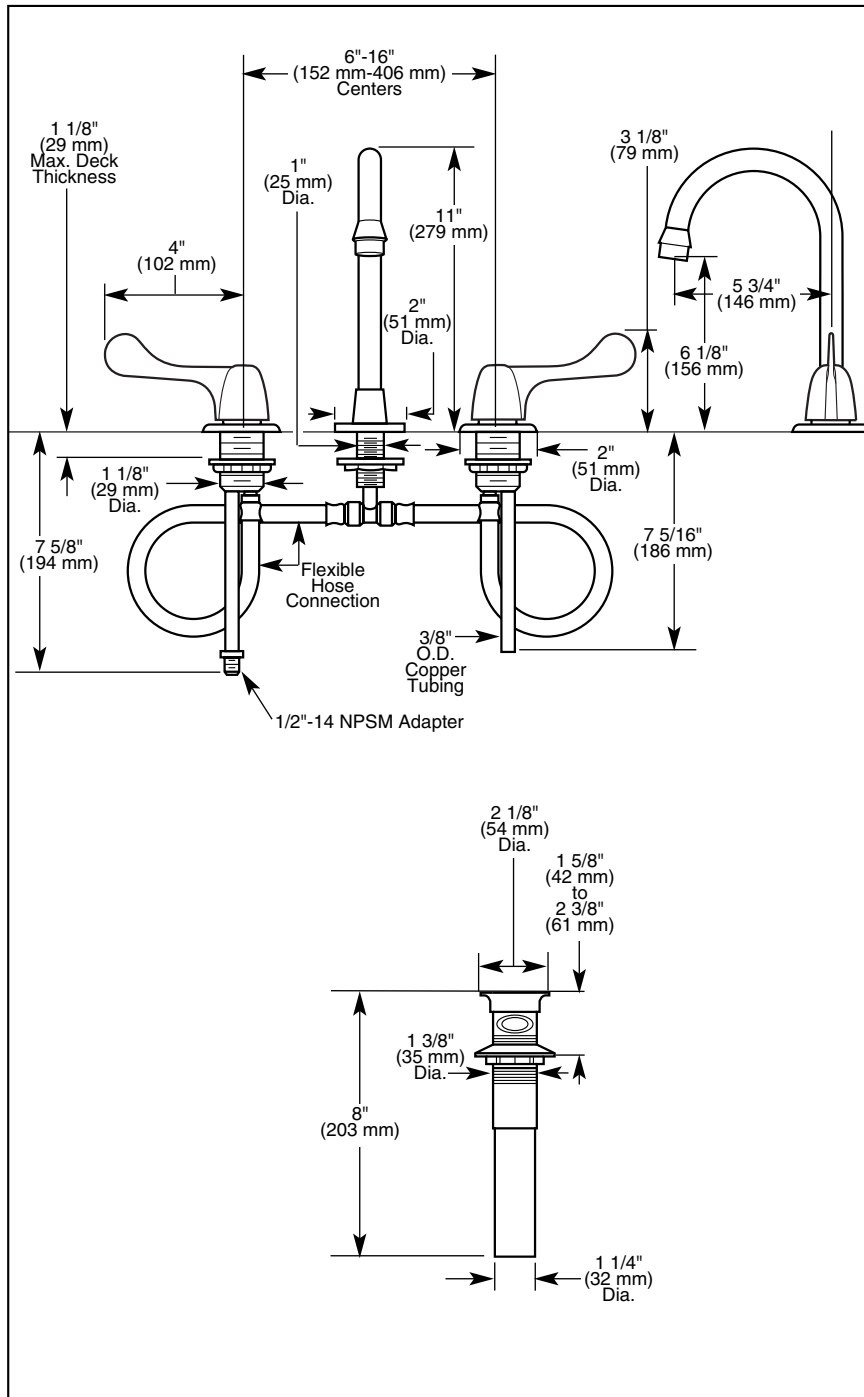


# LAVATORY FAUCETS

- Two Handle
- Widespread
- Three Hole Sink Applications
- 6"-16" (152 mm-406 mm) Centers

Submitted Model No.: \_\_\_\_\_

Specific Features: \_\_\_\_\_

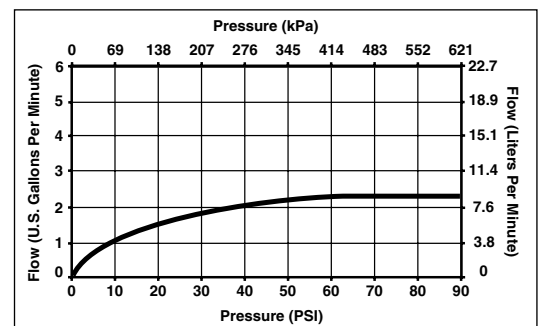


## COMPLIES WITH:

- ASME A112.18.1
- CSA B125
- Indicates ADA compliance to CABO/ANSI A117.1
- IAPMO Listed
- CSA Certified

## STANDARD SPECIFICATIONS:

- Two handle lavatory faucets for concealed mounting on three hole sinks.
- Solid brass fabricated end valves and spout body.
- Widespread 6"-16" (152 mm-406 mm) centers.
- 5 3/4" (146 mm) long, 11" (279 mm) high rigid gooseneck spout.
- Metal wrist blade handles. Vandal resistant red/blue screws indicate hot/cold temperature.
- Control mechanism shall be of the rotating cylinder type with stainless steel plate and 1/4 turn stops. Replaceable non-metallic seats operate in stainless steel lined sockets.
- Hot and cold stems are interchangeable.
- 2.2 gpm (8.3 L/min) laminar flow outlet.
- 3/8" O.D. copper supply tube inlets with 1/2"-14 NPSM adapters.



Delta reserves the right (1) to make changes in specifications and materials, and (2) to change or discontinue models, both without notice or obligation. Dimensions are for reference only.

Standard Features	3579-WFHDF	3579-WFLGHDF
Washerless	◆	◆
Three Hole Installation	◆	◆
6"-16" (152 mm-406 mm) Widespread Centers	◆	◆
5 3/4" (146 mm) Long, 11" (279 mm) High Rigid Gooseneck Spout	◆	◆
2.2 gpm (8.3 L/min) Laminar Flow Outlet	◆	◆
Vandal Resistant Wrist Blade Handles with Red/Blue Indicators	◆	◆
1/4 Turn Handle Stops	◆	◆
3/8" O.D. Copper Tube Inlets with 1/2"-14 NPSM Adapters	◆	◆
Metal Grid Strainer	◆	
Chrome Finish	◆	◆

**Available Options for Field Conversion:**

- Vandal resistant aerator with wrench - 2.2 gpm @ 60 psi (8.3L/min @ 414 kPa). Chrome plated. Order RP246.
- Vandal resistant laminar flow spray outlet with wrench - 2.2 gpm @ 60 psi (8.3L/min @ 414 kPa). Chrome plated. Order RP21966.
- Vandal resistant spray outlet with wrench - .5 gpm (1.9L/min). Chrome plated. Order RP31704.



Indianapolis, Indiana 46280  
 A Division of Masco Corporation of Indiana  
 © 2002 Masco Corporation of Indiana