

16957-▲SD-DST

Submitted Model No.:

Specific Features:



## KITCHEN FAUCETS

- Valdosta™ Collection
- Single Handle Pull-Out
- DIAMOND Seal® Technology
- MagnaTite® Magnetic Docking
- Touch-Clean® sprayhead

### STANDARD SPECIFICATIONS:

- Max flow rate of 1.8 gpm @ 60 PSI (6.8 L/min @ 414 kPa) in spray and standard aerated mode.
- Max flow rate of 2.2 gpm @ 60 PSI (8.3 L/min @ 414 kPa) in aerated mode using Multi-Flow™ feature.
- Single handle kitchen faucets for exposed mounting on 1, 2, 3 and 4 hole sinks.
- Control mechanism shall be the diamond coated ceramic cartridge.
- 3/8" O.D. straight, staggered PEX supply tubes - 30" (762 mm) and 31 1/2" (800 mm) long.
- Spout is connected to valve body with a 53" (1346 mm) long hose.
- 10 3/8" (264 mm) high, 9 7/8" (251 mm) long spout nestled in metal hub assembly, swings 120°.
- Red/blue graphics on handle button to indicate hot/cold temperature.
- Pull-out spout operates in an aerated stream or spray mode via an easy push button.
- Soap dispenser bottle holds up to 8 oz.
- Centermount or 8" (203 mm) centers with optional 10 1/2" (267 mm) long escutcheon included.
- Lever handle shall return to neutral position when valve is turned off.
- Standard 3/8" (10 mm) compression gasket fittings.
- Integral double check valves in spout.

### WARRANTY

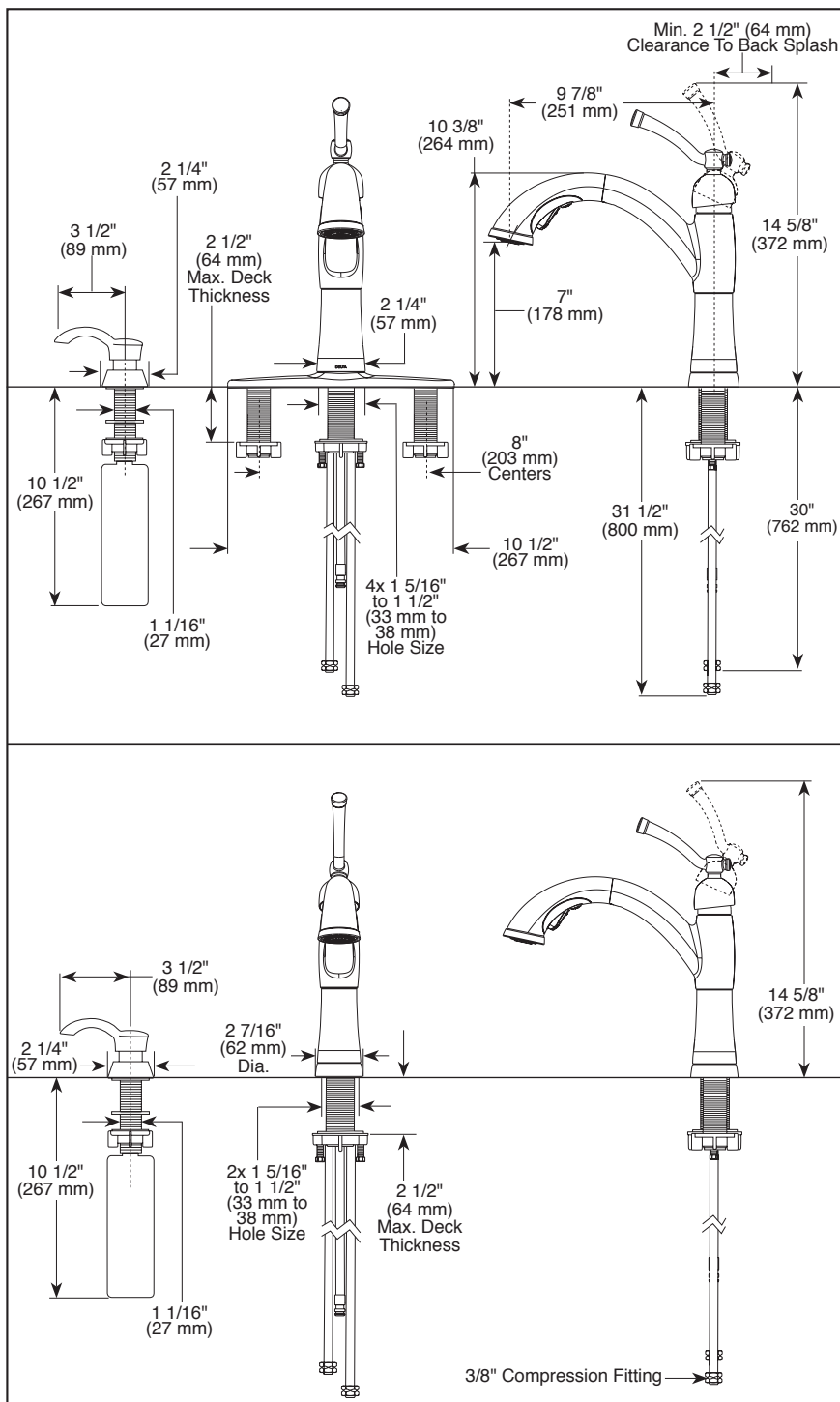
- Lifetime limited warranty on parts (other than electronic parts and batteries) and finishes; or, for commercial users, for 5 years from date of purchase.
- 5 year limited warranty on electronic parts (other than batteries); or, for commercial users, for 1 year from the date of purchase. No warranty is provided on batteries.

### COMPLIES WITH:

- ASME A112.18.1 / CSA B125.1
- ASME A112.18.6
- Indicates compliance to ICC/ANSI A117.1
- Verified compliant with .25% weighted average Pb content regulations.



55 E. 111th Street, Indianapolis, Indiana 46280  
350 South Edgeware Road, St. Thomas, ON N5P 4L1  
© 2015 Masco Corporation of Indiana



### ▲ Designate Proper Finish Suffix

Delta reserves the right (1) to make changes in specifications and materials, and (2) to change or discontinue models, both without notice or obligation. Dimensions are for reference only. See current full-line price book or [www.deltafaucet.com](http://www.deltafaucet.com) for finish options and product availability.

DSP-K-16957-SD-DST Rev. A