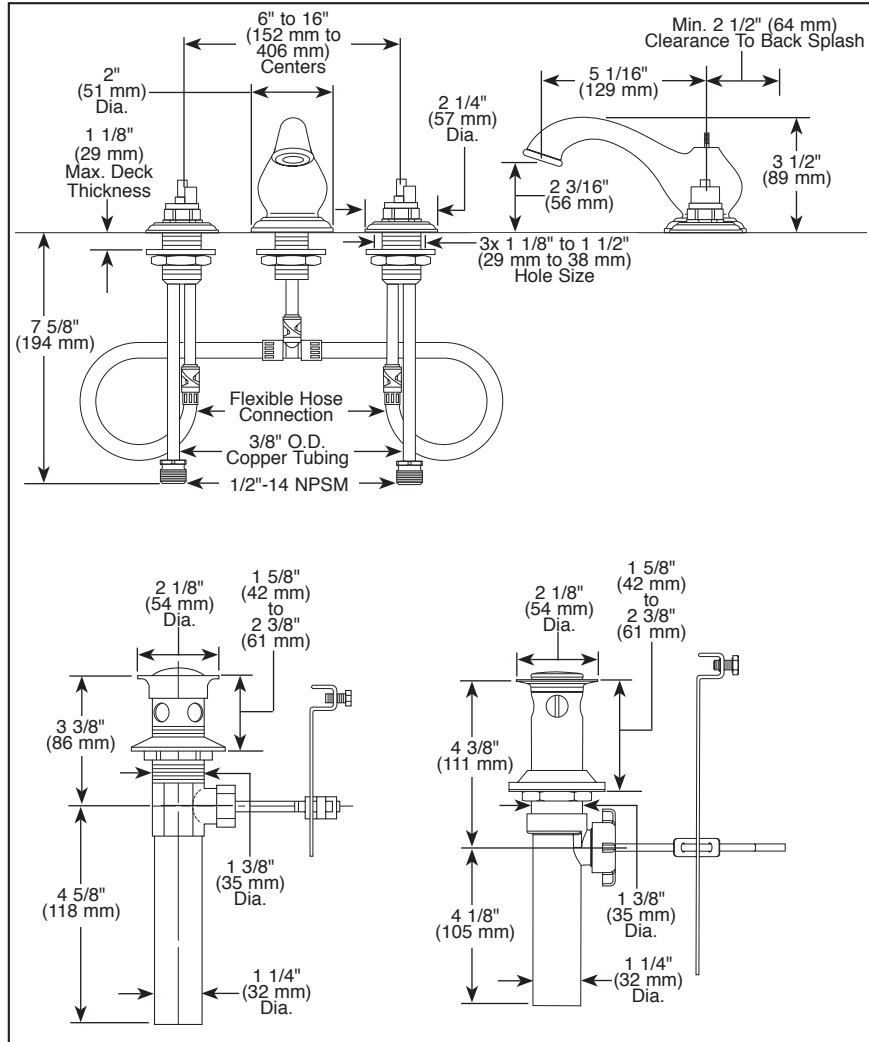


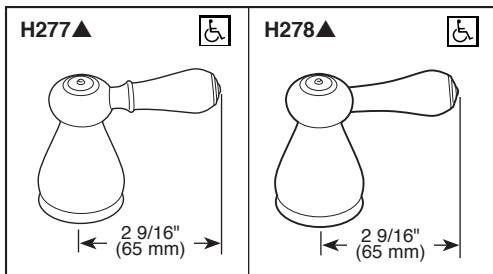
Submitted Model No.: _____

Specific Features: _____



▲ Designate proper finish suffix

Available LHP Handle Options



Delta reserves the right (1) to make changes in specifications and materials, and (2) to change or discontinue models, both without notice or obligation. Dimensions are for reference only. See current full-line price book or www.deltafaucet.com for finish options and product availability.

DSP-L-3578-LHP Rev. F



LAVATORY FAUCETS

- Leland® Series
- Two Handle Widespread

FEATURES:

- Quick-Snap® Installation

STANDARD SPECIFICATIONS:

- Maximum 1.5 gpm @ 60 PSI, 5.7 L/Min @ 414 kPa
- Three hole mount
- Washer, seat/spring
- LHP - Less Handle Program. See handle options below.
- Note: Standard mounting deck thickness can be extended 1" with RP10612.
- Models with "LHP" suffix include metal drain with pop-up type drain fitting with plated flange and stopper cap.
- Models without "LHP" suffix include polypropylene pop-up type drain fitting with plated metal flange and stopper cap.

WARRANTY

- Lifetime limited warranty on parts (other than electronic parts and batteries) and finishes: or, for commercial users, for 5 years from date of purchase.
- 5 year limited warranty on electronic parts (other than batteries); or, for commercial users, for 1 year from the date of purchase. No warranty is provided on batteries.



COMPLIES WITH:

- ASME A112.18.1 / CSA B125.1
- ASME A112.18.2 / CSA B125.2
- Indicates compliance to ICC/ANSI A117.1
- EPA WaterSense®
- "LF" models verified compliant with .25% weighted average Pb content regulations.



55 E. 111th Street, Indianapolis, Indiana 46280
 350 South Edgeware Road, St. Thomas, ON N5P 4L1
 © 2015 Masco Corporation of Indiana