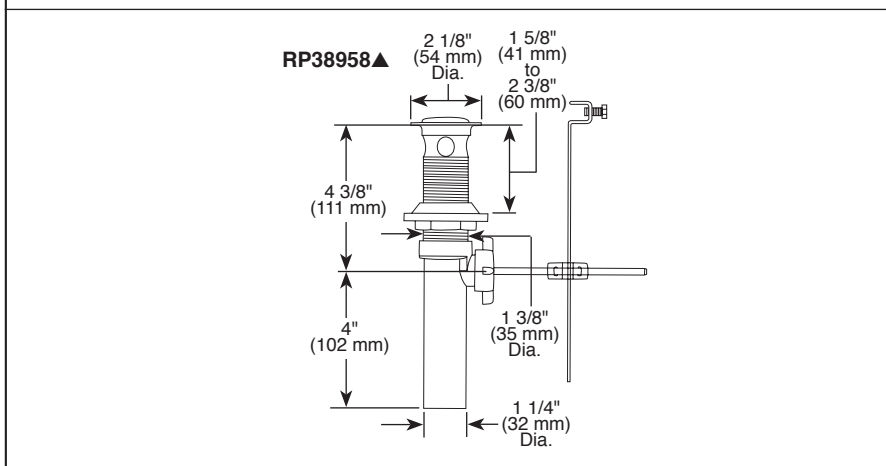
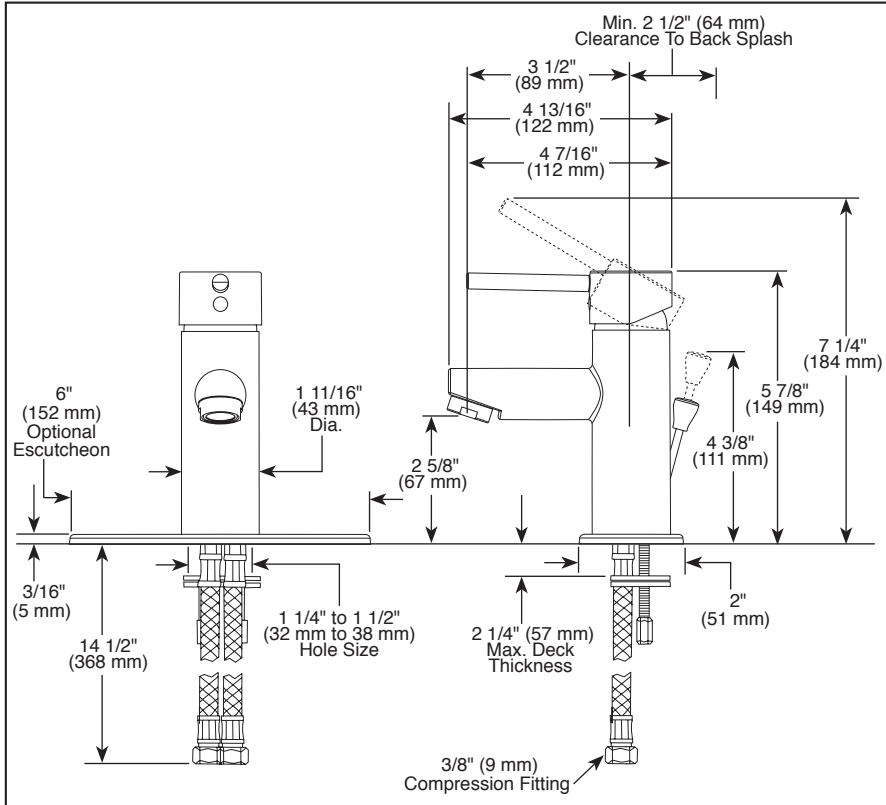


Submitted Model No.: _____

Specific Features: _____



▲ Designate Proper Finish Suffix



LAVATORY FAUCETS

- Contemporary Round
- Single Handle Deck Mount

STANDARD SPECIFICATIONS:

- 1 or 3 hole mount (6" escutcheon plate sold separately for 3 hole installation (RP78359)).
- Solid brass body.
- Control mechanism is the ceramic disc cartridge with temperature limiter.
- Red/blue indicator markings.
- Control handle shall return to neutral position when valve is turned off.
- Maximum 1.2 gpm @ 60 psi, 4.5 L/min @ 414 kPa.
- GPM indicates max. 1.0 gpm @ 60 psi, 3.8 L/min @ 414 kPa.
- HGM indicates max. 0.5 gpm @ 60 psi, 1.9 L/min @ 414 kPa.
- 1/4" threaded stud mounting.
- 3/8" compression fittings with flexible supply hoses 14 1/2" (368 mm) long.
- Models have 50/50 pop-up type fitting with plated flange and stopper.

WARRANTY

- Lifetime limited warranty on parts (other than electronic parts and batteries) and finishes: or, for commercial users, for 5 years from date of purchase.
- 5 year limited warranty on electronic parts (other than batteries); or, for commercial users, for 1 year from the date of purchase. No warranty is provided on batteries.



COMPLIES WITH:

- ASME A112.18.1 / CSA B125.1
- ASME A112.18.2 / CSA B125.2
- ASME A112.18.6

Indicates compliance to ICC/ANSI A117.1

- * EPA WaterSense®
- Verified compliant with .25% weighted average Pb content regulations.



55 E. 111th Street, Indianapolis, Indiana 46280
350 South Edgeware Road, St. Thomas, Ontario Canada N5P 4L1
© 2016 Masco Corporation of Indiana