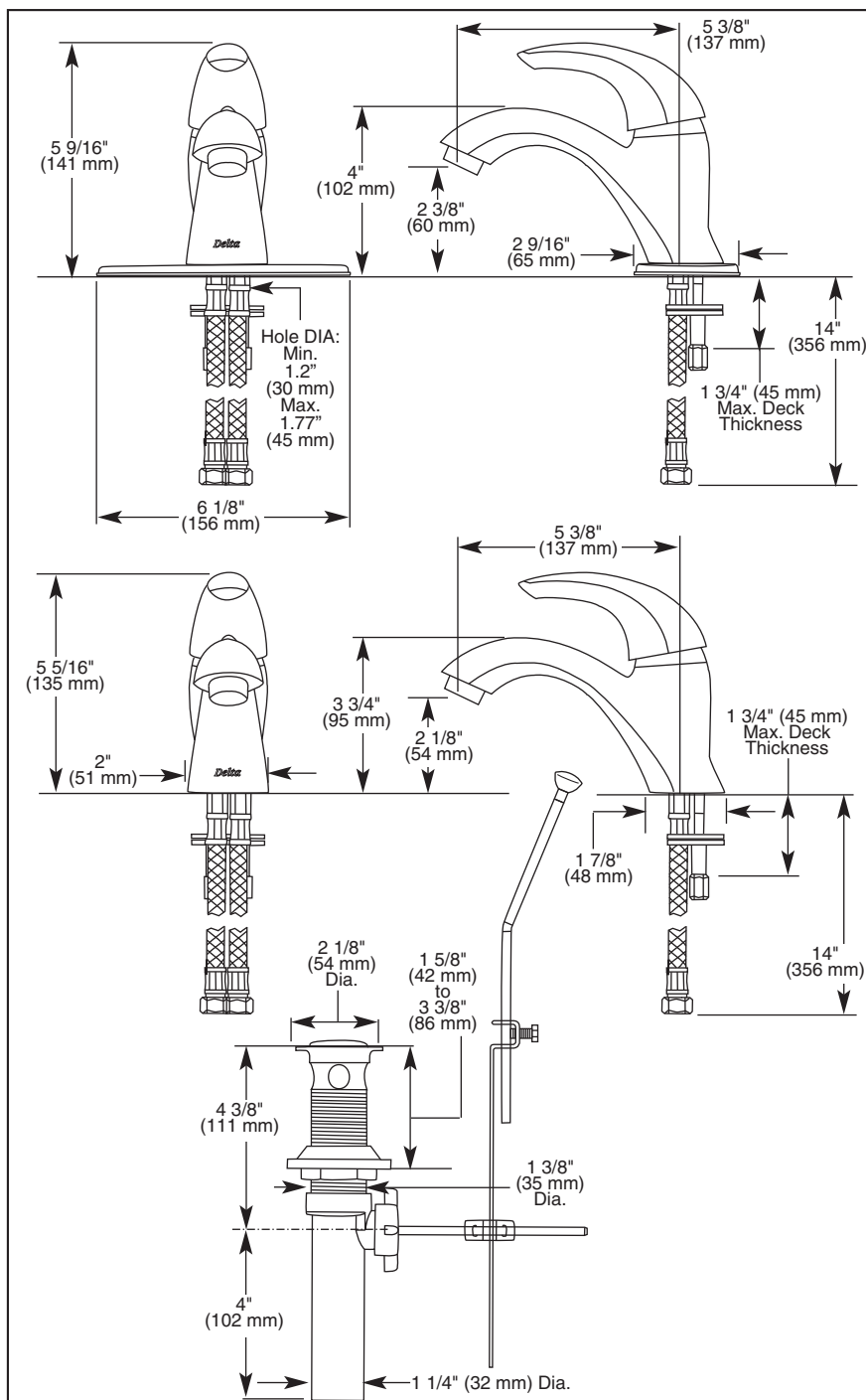


Submitted Model No.: \_\_\_\_\_

Specific Features: \_\_\_\_\_



Delta reserves the right (1) to make changes in specifications and materials, and (2) to change or discontinue models, both without notice or obligation. Dimensions are for reference only. See current full-line price book or [www.specselectronline.com](http://www.specselectronline.com) for finish options and product availability.

1.D.12



## LAVATORY FAUCETS

- C-Spout Series
- Single Handle Deck Mount
- 1 or 3 Hole Sink Applications

### STANDARD SPECIFICATIONS:

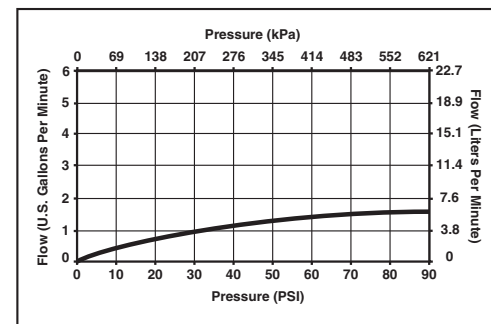
- Solid brass fabricated body.
- Single hole mount or 4" (102mm) centerset with optional included escutcheon.
- 5 3/8" (137 mm) long, 5 9/16" (141 mm) high rigid spout.
- 14" (356 mm) flex supplies with 3/8" (10mm) compression fittings (hot and cold).
- Red/Blue graphics on handle button indicate hot/cold temperature.
- 50/50 pop-up has metal flange with plastic drain.
- Ceramic cartridge with high temperature rotational limit stop.

### WARRANTY

- Lifetime Faucet and Finish Limited Warranty to the original consumer purchaser to be free from defects in material and workmanship.
- 5 Year Limited Warranty for usage in all industrial, commercial and business applications.

### COMPLIES WITH:

- ASME A112.18.1 / CSA B125.1
- Indicates ADA compliance to ICC/ANSI A117.1
- IAPMO Listed
- CSA Certified
- EPA WaterSense



55 E. 111th Street, Indianapolis, IN 46280  
395 Matheson Blvd. E., Mississauga, ON L4Z 2H2  
© 2006 Masco Corporation of Indiana

DSP-L-583 REV. C