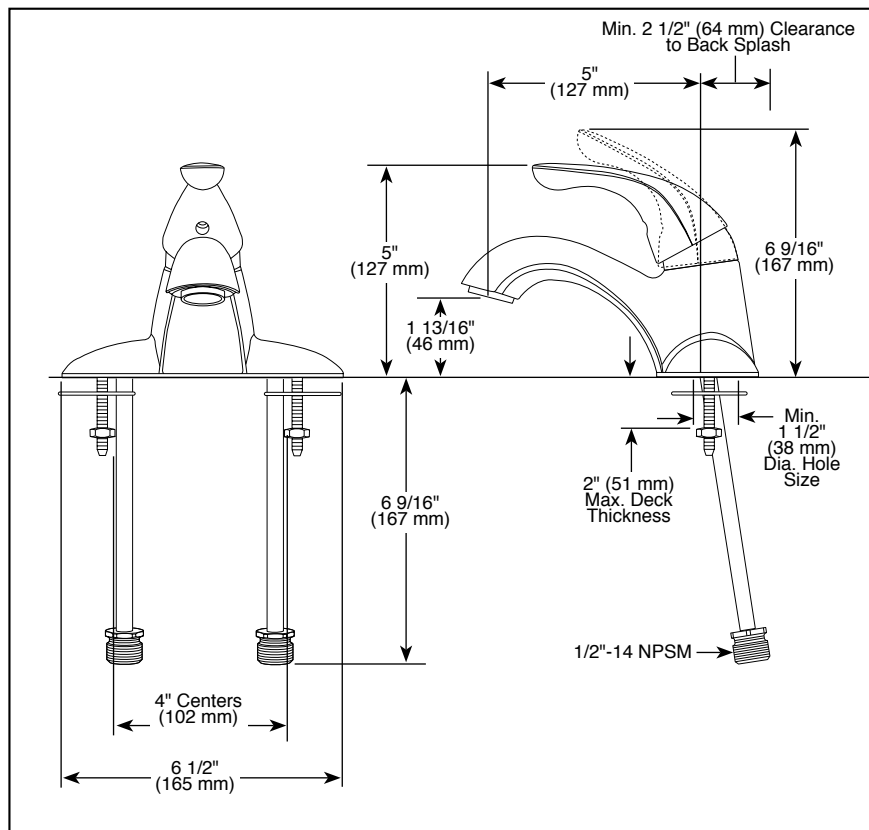
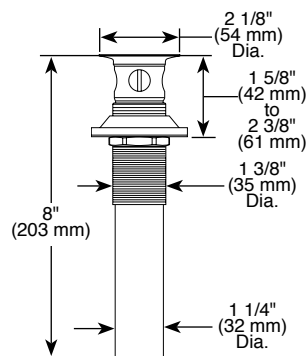


Submitted Model No.:

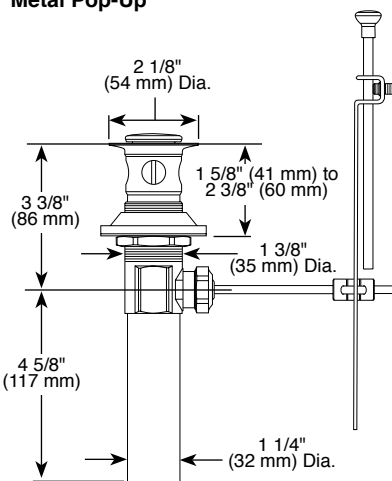
Specific Features:



#### Metal Grid Strainer



#### Metal Pop-Up



# DELTA<sup>®</sup> COMMERCIAL LAVATORY FAUCETS

- Single Handle
- 2 and 3 Hole Sink Applications
- 4" (102 mm) Centerset

#### STANDARD SPECIFICATIONS:

- Single handle lavatory deck faucets (for exposed mounting on two and three hole sinks).
- 4" (102 mm) centerset.
- Solid brass fabricated body.
- 5" (127 mm) spout.
- Vandal resistant lever handle. Red/blue colored graphics indicate hot/cold temperature.
- Control mechanism is the diamond embedded ceramic disc cartridge.
- Control handle shall return to the neutral position when valve is turned off.
- Adjustable handle limit stop.
- 3/8" O.D. copper supply tubes - 5 13/16" (148 mm) long with 1/2"-14 NPSM adapters.
- Models have 1/4" threaded mounting studs.
- Available options for field conversion:  
6" (152 mm) long elbow handle-red/blue colored graphics indicate hot/cold temperature. Order RP54687.
- Vandal resistant aerator or spray outlet.
- Metal grid strainer (523).
- Metal pop-up drain (520).
- Lift rod hole (520).
- Maximum 1.5 gpm @ 60 psi, 5.7 L/min @ 414 kPa.  
HGM (models only) max. 0.5 gpm @ 60 psi, 1.9 L/min @ 414 kPa.  
TGM (models only) max. 0.35 gpm @ 60 psi, 1.3 L/min @ 414 kPa.

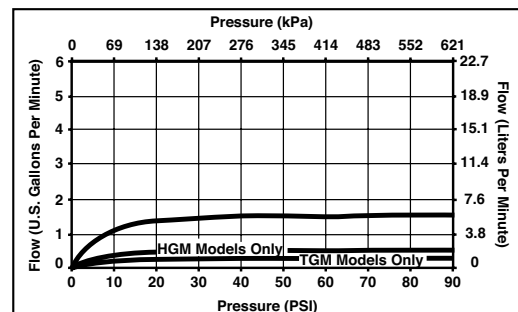
#### WARRANTY

- Lifetime Faucet and Finish Limited Warranty to the original consumer purchaser to be free from defects in material and workmanship.
- 5 Year Limited Warranty for usage in all industrial, commercial and business applications.



#### COMPLIES WITH:

- ASME A112.18.1 / CSA B125.1
- ASME A112.18.2 / CSA B125.2
- Indicates compliance to ICC/ANSI A117.1
- EPA WaterSense<sup>®</sup>
- Verified compliant with .25% weighted average Pb content regulations.



**DELTA<sup>®</sup>**  
FAUCET COMPANY

55 E. 111th Street, Indianapolis, Indiana 46280  
350 South Edgeware Road, St. Thomas, ON N5P 4L1  
© 2012 Masco Corporation of Indiana

Delta reserves the right (1) to make changes in specifications and materials, and (2) to change or discontinue models, both without notice or obligation. Dimensions are for reference only. See current full-line price book or [www.specselect.com](http://www.specselect.com) for finish options and product availability.