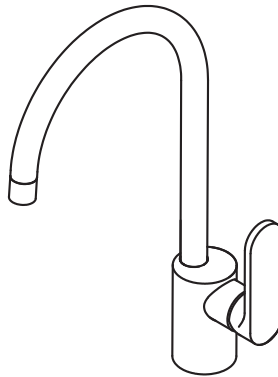


INSTALLATION INSTRUCTIONS

Isle® Single Lever Kitchen Faucet

Model D35409000

Thank you for selecting DXV. To ensure that your installation proceeds smoothly, please read these instructions carefully before you begin.



DXV

RECOMMENDED TOOLS AND MATERIALS

Most of the procedures require the use of common tools and materials, which are available from hardware and plumbing supply stores. It is essential that the tools and materials be on hand before work is begun.



Adjustable Wrench



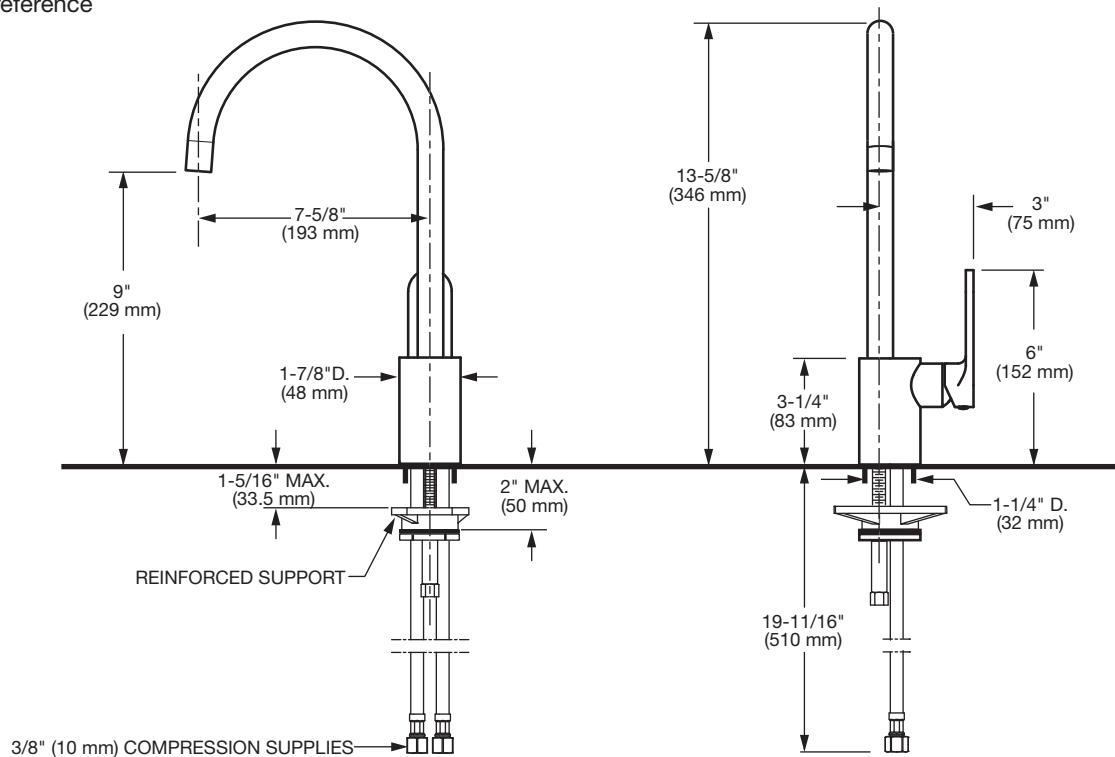
Channel Locks



Flat Blade Screwdriver

ROUGHING-IN DIMENSIONS:

- For reference



In the United States:

DXV
One Centennial Avenue
Piscataway, New Jersey 08855
Attention: Director of Customer Care

For residents of the United States, warranty information may also be obtained by calling the following toll free number: (800) 227-2734
www.DXV.com

In Canada:

DXV
5900 Avebury Road
Mississauga, Ontario
L5R 3M3
Canada

Toll Free: 1-800-387-0369
Local: 905-306-1093
Fax: 1-800-395-1498
www.DXV.ca

In Mexico:

DXV
Via Morelos 330
Col. Santa Clara Coatitla
Ecatepec, Estado de México 55540

Toll Free: 01-800-8391200
www.DXV.mx

1 INSTALL FAUCET

CAUTION Turn off hot and cold water supplies before beginning.

- Seat SEAL (1) into under side of FAUCET BASE (2). **Fig. A.**
- Feed FAUCET SUPPLIES (3), and MOUNTING STUD (4) through the mounting hole of mounting surface. **Fig. A.**
- From below, install SUPPORT PLATE (8), GASKET (7) with RETAINING WASHER (5) onto MOUNTING STUD (4). Install MOUNTING NUT (6) onto MOUNTING STUD (4). **Fig. B.**
- Adjust Faucet so that it is centered. Tighten MOUNTING NUT (6) to complete faucet mounting. **Fig. B.**

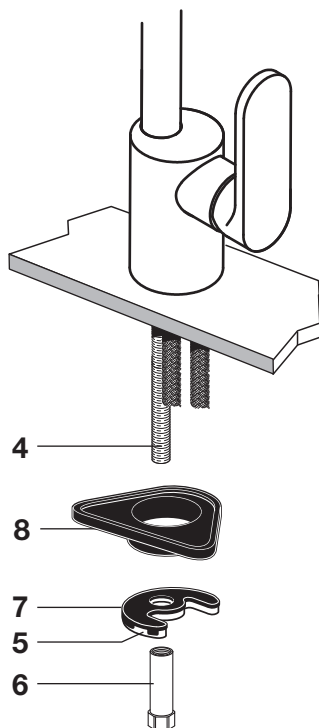
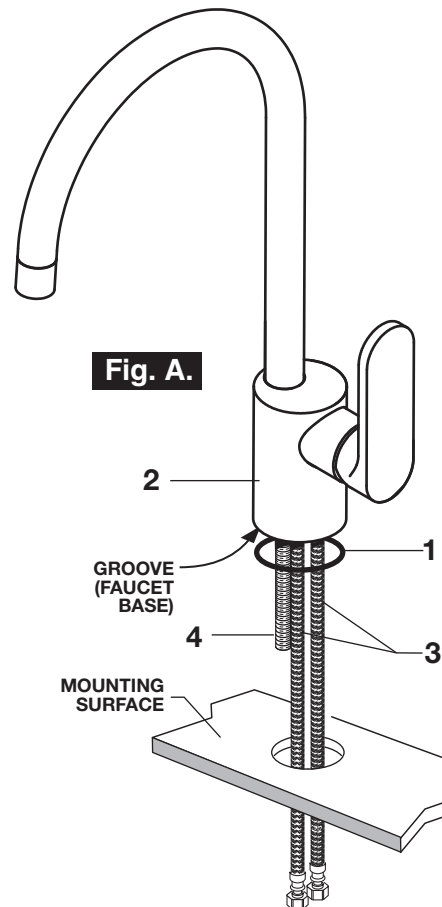


Fig. B.

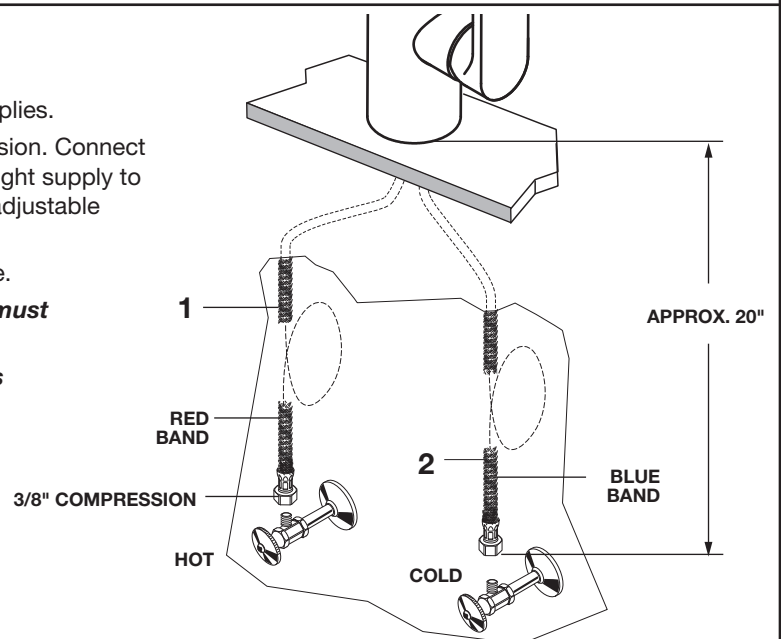


2 MAKE WATER SUPPLY CONNECTIONS

- Connect FLEXIBLE SUPPLIES (1, 2) directly to wall supplies.
- Connection on fitting supplies are 3/8" (8 mm) compression. Connect left SUPPLY (1) to Hot (Marked with a Red Stripe) and right supply to COLD (2) wall supply (Marked with a Blue Stripe). Use adjustable wrench to tighten connections. Do not over tighten.
- Faucet supplies are 20" (508 mm) long from faucet base.

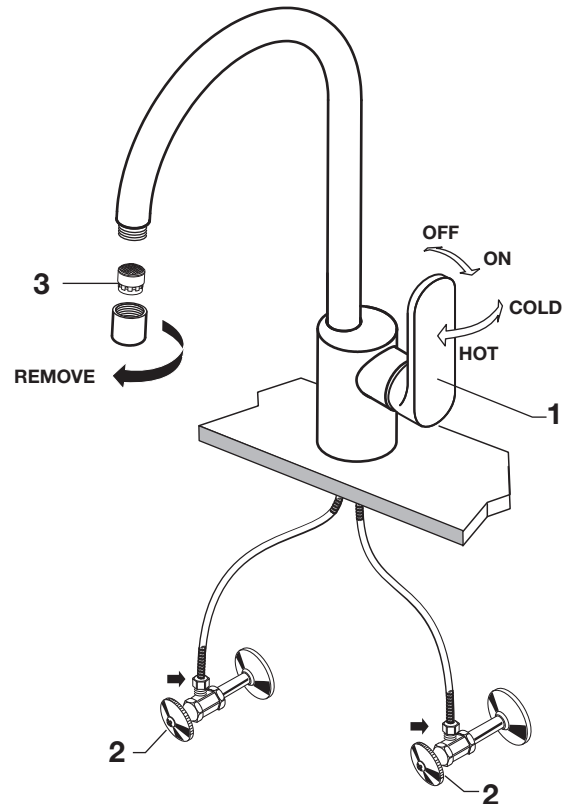
Note: If additional supply length is required, installer must purchase additional parts separately.

Important: If SUPPLY HOSES (1, 2) are to long, loop as illustrated to avoid kinking.



3 TEST INSTALLED FAUCET

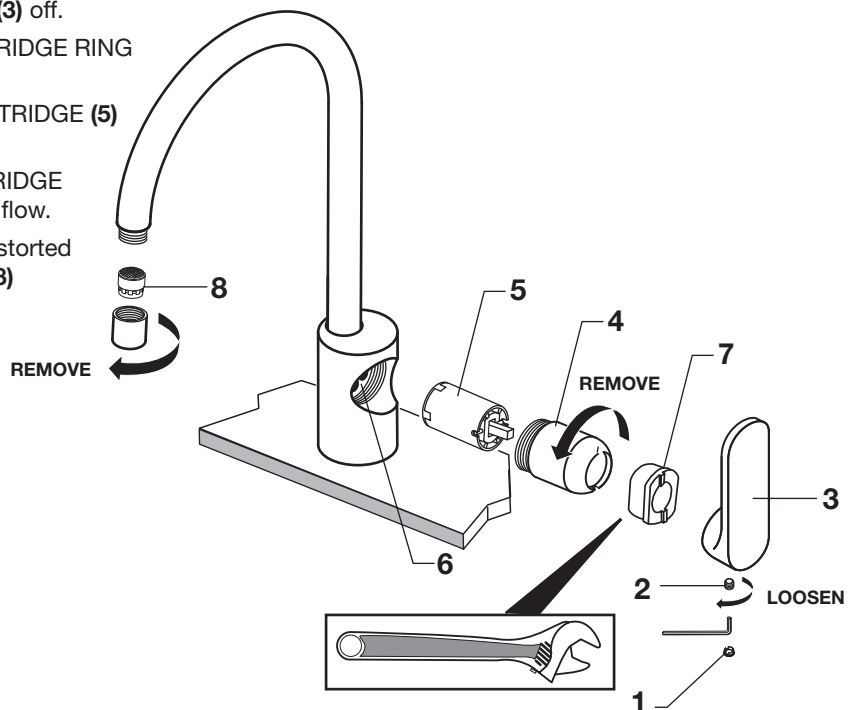
- With HANDLE (1) in OFF position, turn on WATER SUPPLIES (2) and check all connections for leaks. ➡
- Remove AERATOR (3).
- Operate HANDLE (1) to flush water lines thoroughly.
- Replace AERATOR (3).



4 SERVICE

Clogged CARTRIDGE outlets or inlets may cause reduced flow. To clean, first turn off water supply then:

- Pull out INDEX BUTTON (1). Loosen HANDLE SCREW (2) with 2.5 mm Hex Wrench, then pull HANDLE (3) off.
- Unthread CARTRIDGE COVER (4) with CARTRIDGE RING NUT KEY (7) supplied with faucet.
- Remove CARTRIDGE (5). Clean inlets of CARTRIDGE (5) and MANIFOLD (6).
- Reassemble CARTRIDGE (5). Replace CARTRIDGE COVER (4) and HANDLE (3) assembly, check flow.
- AERATOR (8) may accumulate dirt causing distorted and reduced water flow. Remove AERATOR (8) and rinse clean and replace.



DXV

Isle® Single Control Kitchen Faucet

MODEL NUMBER

D35409000

Replace the “YYY” with
appropriate finish code

POLISHED CHROME	100
ULTRA STEEL	355

