

# ELKAY®

## INSTALLATION & USE MANUAL

### Elkay ezH2O® Built-in Non-Filtered Vandal Resistant Mechanical Bottle Filling Station with Brass Drain



#### INSTALLER

**CAUTION:**

Review these instructions before beginning installation. Be sure that installation conforms to all plumbing, electrical and other applicable codes.

**WARNING:**

When installation is complete, ensure these instructions are left in the plastic bag provided inside the installed unit for future reference.

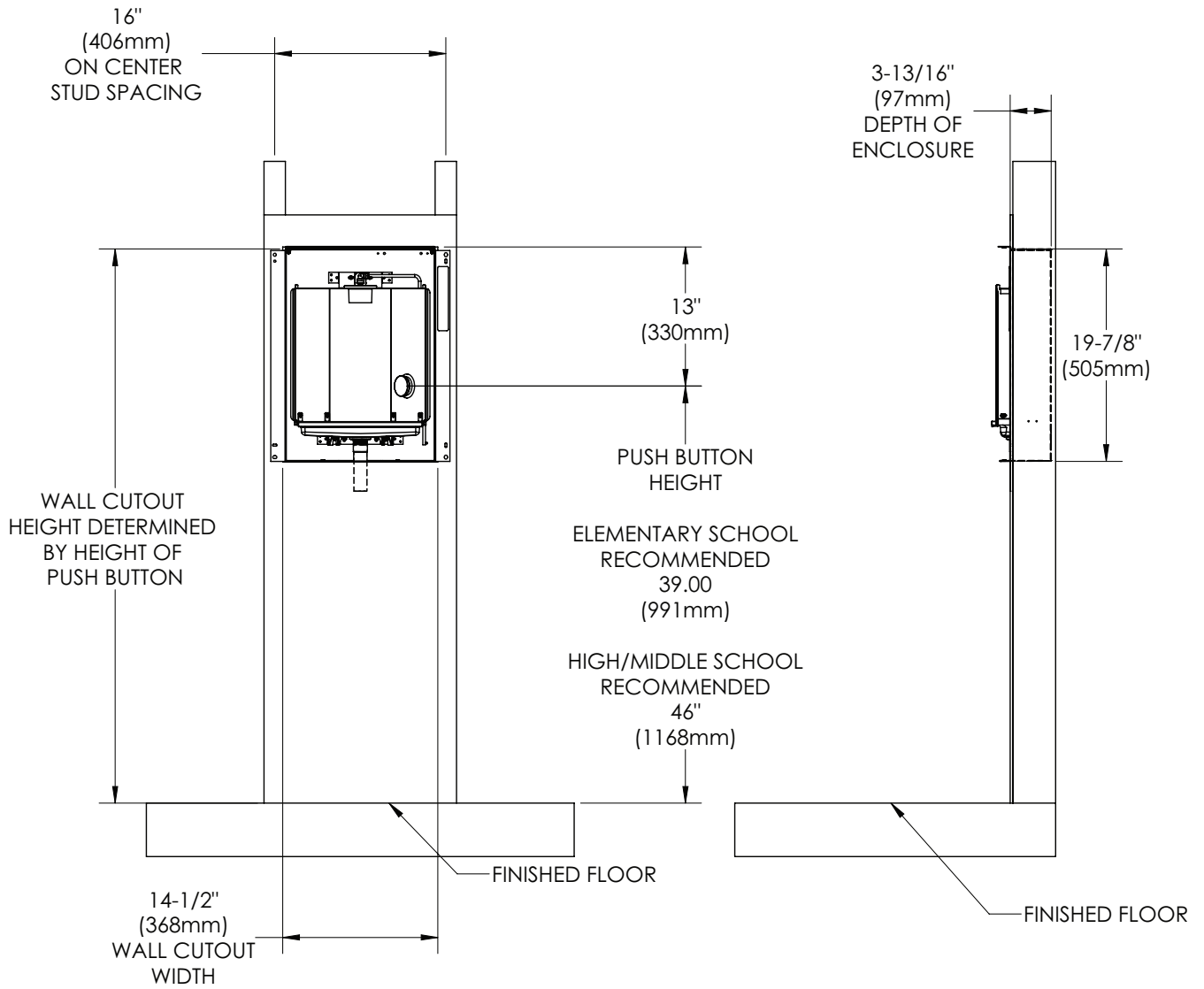
**WARNING:**

Service to be performed by authorized service personnel only.

**NOTE:** It is common practice to ground electrical hardware such as telephones, computers and other devices to available water lines. This can, however, cause electrical feedback in the plumbing circuit, which results in an “electrolysis” effect occurring in the fountain. This may result in water which has a metallic taste to it or has a noticeable increase in the metallic content of the water.

When inspecting plumbing circuit, remember the line may be grounded some distance from the installation, and may occur outside the building or area in which the unit is being installed.

This condition can be avoided (in most cases) by using recommended materials during installation. Any drain fittings provided by the installer should be made of **plastic** which will electronically isolate the fountain from the remainder of the building’s plumbing circuits.



**Figure 1 - Rough-in Dimensions**

**REQUIRED TOOLS AND MATERIALS**

These tables show special tools and/or additional materials (not provided) which are necessary to complete installation of these units:

**TOOLS REQUIRED**

Tool	Used For
Tape Measure	Locate the mounting opening.
Wall Cutting Tool	Remove section of wall to insert unit.
Level	Proper mounting into the wall cavity.
Phillips Screw Driver	Remove electrical box cover.
Various Plumber's Hand Tools	Connecting unit's plumbing to the household water source and waste drain.
3/32" Allen Wrench	Remove the front covers.

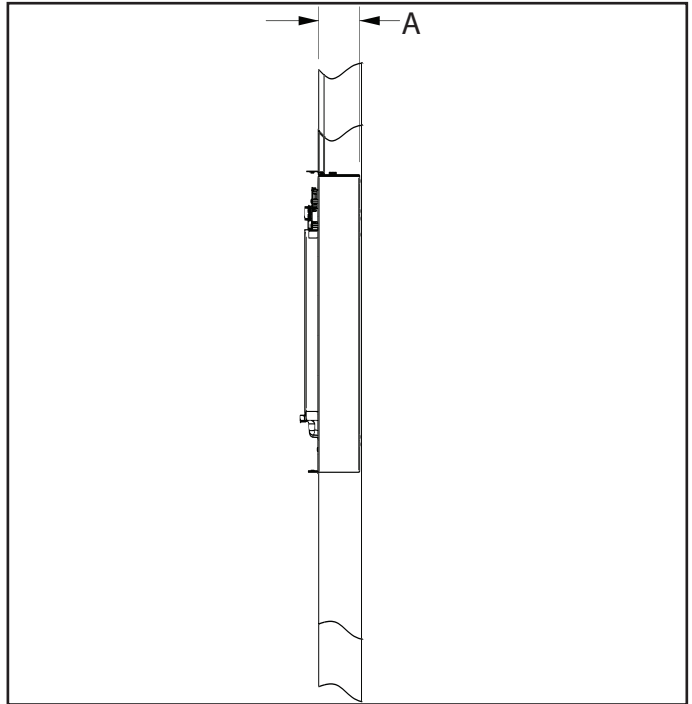
**PARTS REQUIRED NOT INCLUDED**

Description	Qty.
#8 Flathead Screws 1-1/4" long.	8
<b>Water</b>	
3/8" flexible water tubing (copper or plastic) (insulated).	—
Quarter-turn shut off valve at the location of the water source.	1
1/4" copper or plastic tubing if a remote filter is installed (insulated)	15 feet or less
<b>Optional Catch Basin Drain</b>	
1-1/4" P-trap and related parts.	—
Plumbers Putty	—

**Critical Depth Check**

1. **Make** sure the wall cavity is deep enough to house the water dispenser (dimension A).

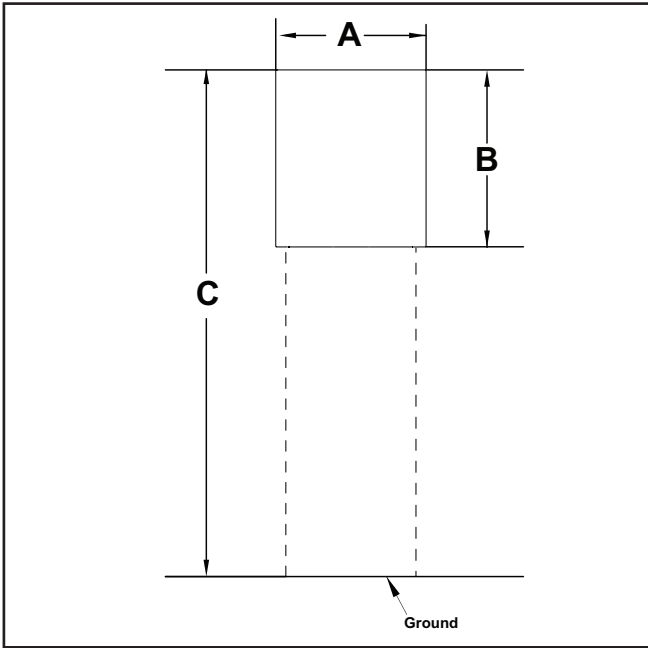
Dimension A is a minimum requirement.



**Water Dispenser**

A) 3-7/8" (97mm) deep

**Cutting Size and Mounting Dimensions**



**Recommended Dimensions**

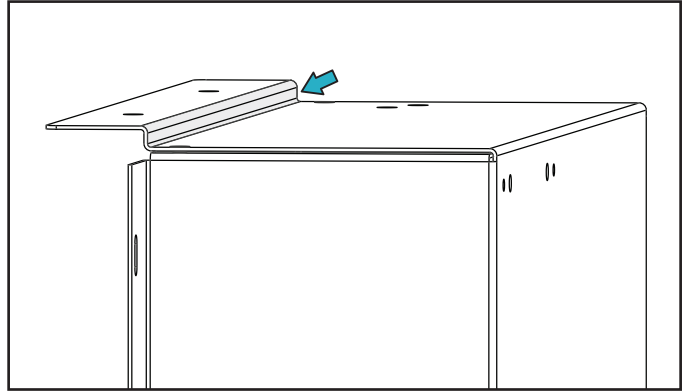
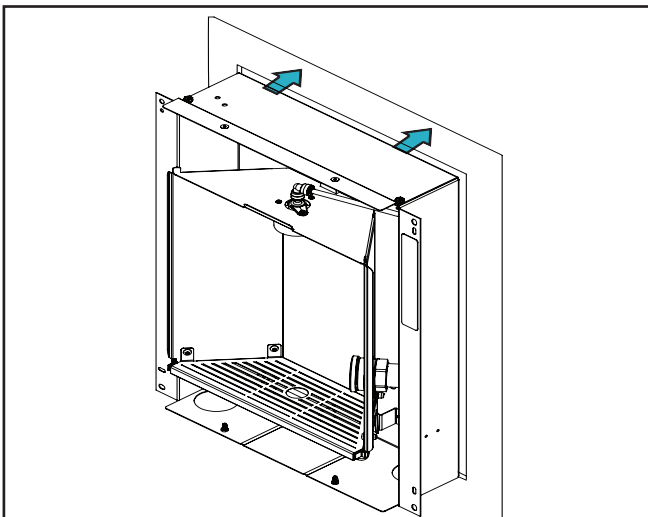
**A** - Unit width opening should be 14-1/2" (368 mm) wide

**B** - Unit height opening should be 19-7/8" (505 mm) high

**C** - Optional cut from bottom of water dispenser to floor for plumbing and electrical access.

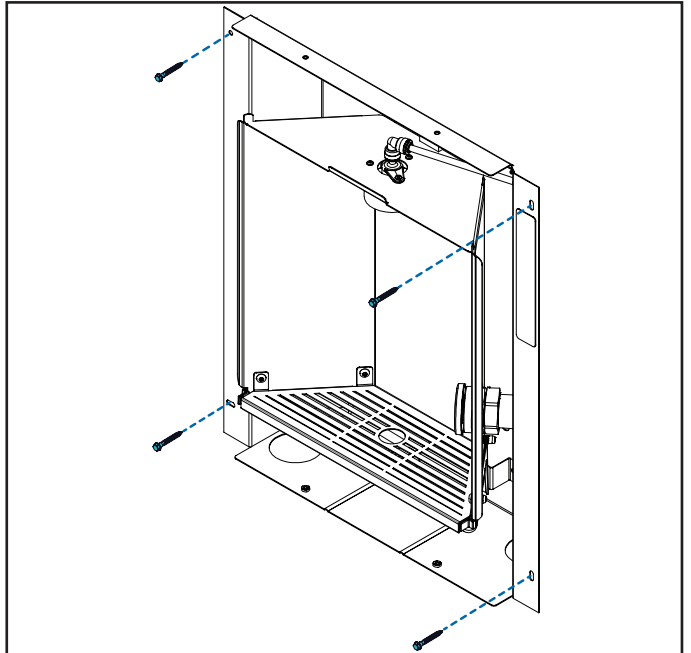
**Water Dispenser Installation**

1. Cut the opening into the wall using the recommended mounting dimensions as a guide. (See above figure cutting size and mounting dimensions).
2. Place the unit into the wall cavity and slide it up against the drywall at the top of the opening. The unit is designed with 1/4" overlap to conceal any irregularities at the top of the wall opening.



**Note:** A 1/4 inch offset helps conceal any irregularities at the top of the wall opening.

3. Using a bubble level, straighten the water dispenser and attach it to the wall studs using four #8 flathead screws.



1. **Make** water supply connections. Install a shut-off valve and union connection to building water-supply (valve and union not provided). Turn on water supply and flush the line throughly.

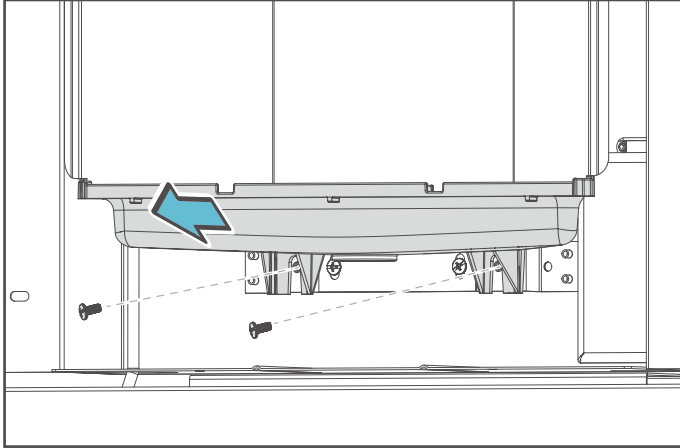
**Caution: DO NOT SOLDER** tubes inserted into the strainer as damage to the o-rings may result.

## Connecting Catch Basin Waste Drain

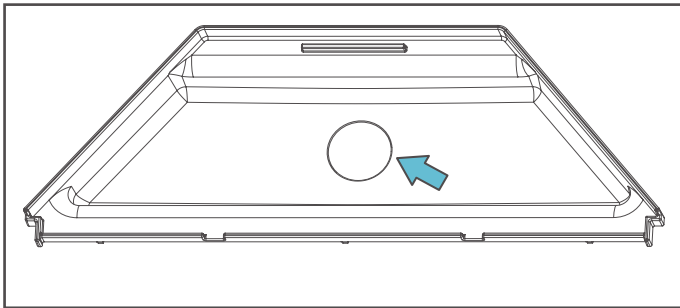
Installing the drain is highly recommended to prevent basin overflow.

The following steps cover the installation of the drain.

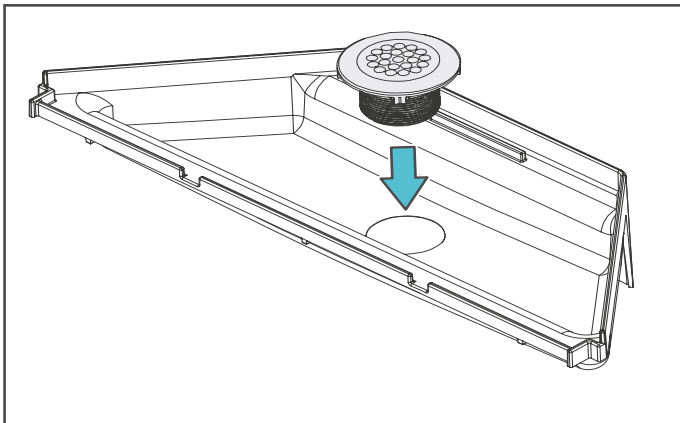
1. Remove the two screws attaching the drain basin to the water dispenser. Remove the drain basin.



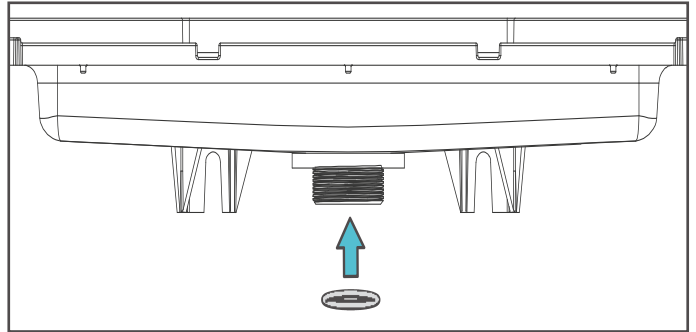
2. Place the drain basin on a flat, hard surface, such as a piece of sacrificial wood. Carefully drill a hole in the basin using a 1-3/8" hole saw using the centering-dimple as a guide to center the hole saw.



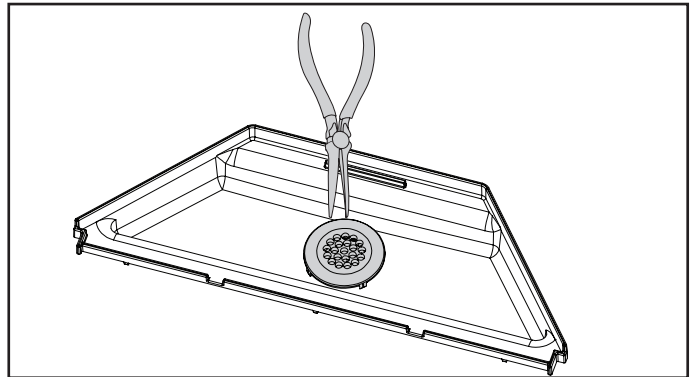
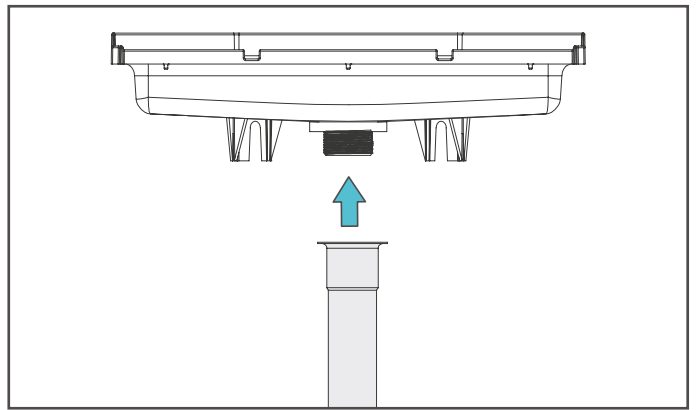
3. Trial fit the strainer. If the strainer does not fit, carefully open the size of the hole.



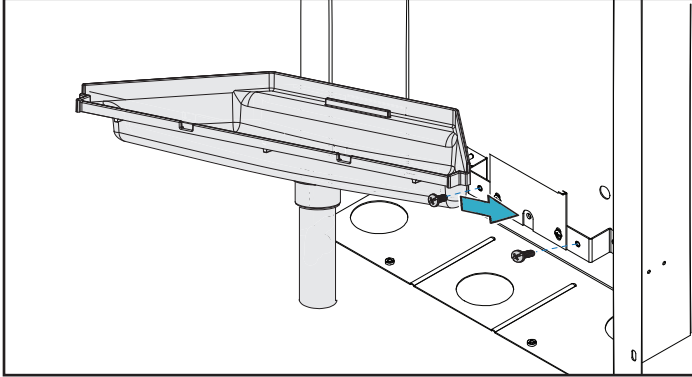
4. Install the O-ring over the strainer threads.



5. Thread the strainer into the drain adapter. Needle-nose pliers can be used to hold the drain adapter from the top while tightening. Ensure that the connection creates a watertight seal.



7. Place the drain basin back into the water dispenser and reinstall the two screws.



8. Connect the drain into the household waste drain pipe.

If the p-trap is located inside a sealed walled, it must have permanently-glued joints. If the p-trap is in an accessible location, a standard non-glued p-trap is acceptable.

**Install the water dispenser's front cover.**

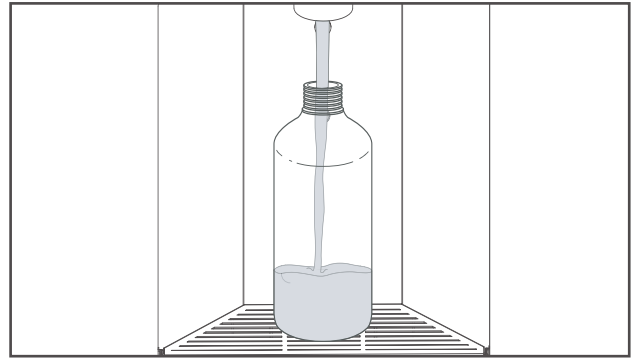
9. Line up the front panel with the dispenser frame and attach using the flathead screws and a 3/32" hex wrench.
10. Install the metal grate cover using the 4 Screws.

**Note:** Always consult local plumbing codes prior to installation.

These products are designed to operate on 20-105 PSI supply line pressure. If inlet pressure is above 105 PSI, a pressure regulator must be installed in the supply line.

**Caution:** Any damage caused by connecting these products to a supply line with pressure lower than 20 PSI or higher than 105 PSI IS NOT covered under warranty.

Verify proper dispensing from the bottle filler by placing a cup, under the water dispenser spout and press the button and verify water dispenses. Note: the first initial dispenses might have air in the line which may cause a sputter. This will be eliminated once all air is purged from the line. A steady stream of water assures all air is removed. Check for leaks.

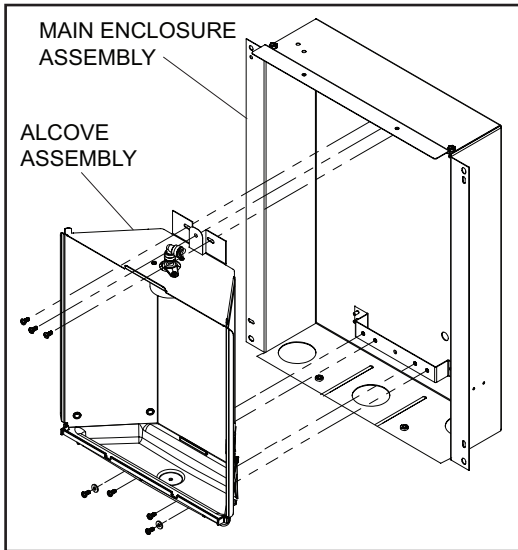


Once the installation is complete, the water has been turned on, and any trapped air has been bled from the system re-check for any water leaks.

**REPLACEMENT PART LIST**

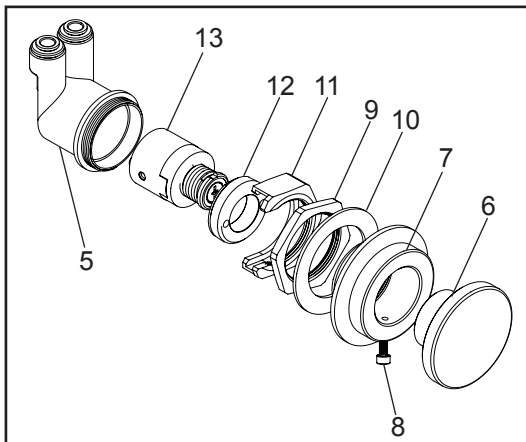
ITEM NO.	PART NO.	DESCRIPTION
NS	98546C	Kit - Aerator Replacement
NS	1000004698	Fitting - Hose to Trap
1	2000001260	Kit - Alcove
2	1000005392	Kit - Drain
3	56331C	Connector
4	70793C	Elbow 1/4 O.D. X 90
5	50985C	Regulator Holder
6	45960C	Push Button
7	45663C	Push Button Sleeve
8	75672C	Screw - Cap #6-32 X 5/16
9	40045C	Hex Nut
10	28308C	Washer - Spacer 2.00 OD
11	45736C	Nut - Reg Mount
12	10031C	1-1/8-24 Retaining Nut
13	66822C	Regulator Assy. (1.0GPM)

NS = NOT SHOWN



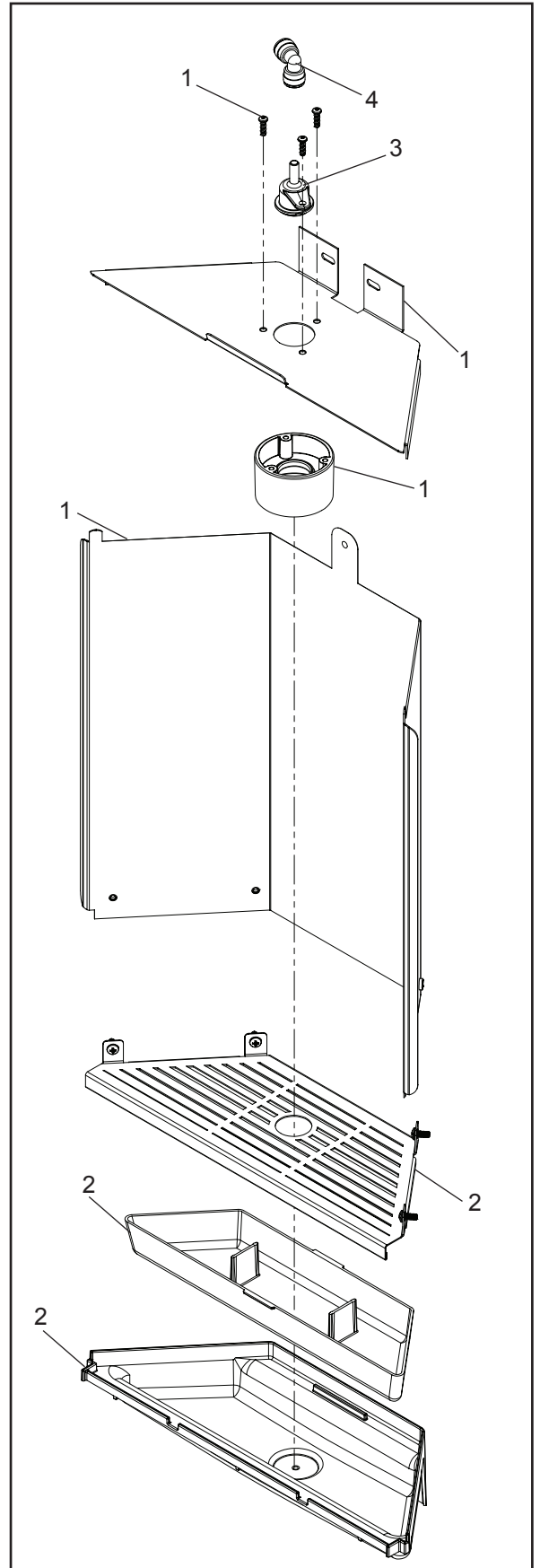
**Figure 2**

**Main Enclosure and Alcove Assembly**



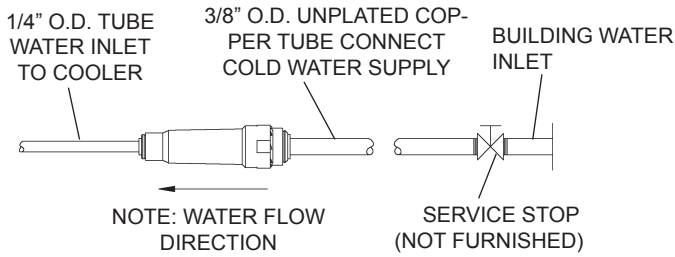
**Figure 4**

**Bottle Filler Push Button Assembly**

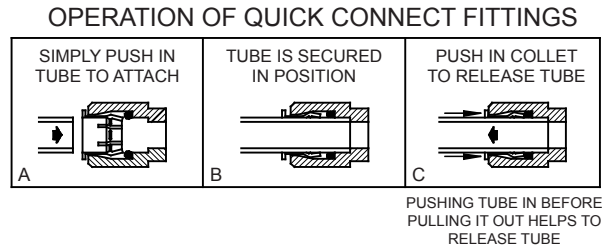


**Figure 3**

**Alcove Assembly**



**Figure 5 – Water Supply Connections**



**Figure 6 – Quick Connect Fittings**

**Installation Package**

The components for installation are packed in one box.

Additional materials, as noted in the Parts List, are also shipped in these boxes.

**TROUBLESHOOTING & MAINTENANCE**

**Orifice Assembly:** Mineral deposits on orifice can cause water flow to spurt or not regulate. Mineral deposits may be removed from the orifice by poking with a small round file not over 1/8" diameter, or using a small diameter wire.

**CAUTION: DO NOT** file or cut orifice material.

**Actuation of Quick Connect Water Fittings:** Cooler is provided with lead-free connectors which utilize an o-ring water seal. To remove tubing from the fitting, relieve water pressure, push in on the gray collar while pulling on the tubing. (See Fig. 6) To insert tubing, push tube straight into fitting until it reaches a positive stop (approximately 3/4").

FOR PARTS, CONTACT YOUR LOCAL DISTRIBUTOR OR CALL 1.800.834.4816  
REPAIR SERVICE INFORMATION TOLL FREE NUMBER 1.800.260.6640

ELKAY MANUFACTURING COMPANY • 1333 BUTTERFIELD ROAD SUITE 200 DOWNERS GROVE, IL 60515 • 630.574.8484 • www.elkay.com