

ELKAY®**INSTALLATION & USE MANUAL****SWIRLFLO® Fountains with Vandal Resistant Bubblers
and Vandal Resistant Water Dispenser**

EZLSSN-EDFPBMV117K



LZLSSN-EDFPBMV117K

(Shown with optional ACCESS12X38-5 access panel.)

INSTALLER**CAUTION:**

Review these instructions before beginning installation. Be sure that installation conforms to all plumbing, electrical and other applicable codes.

**WARNING:**

When installation is complete, ensure these instructions are left in the plastic bag provided inside the installed unit for future reference.

**WARNING:**

Service to be performed by authorized service personnel only.

NOTE: It is common practice to ground electrical hardware such as telephones, computers and other devices to available water lines. This can, however, cause electrical feedback in the plumbing circuit, which results in an “electrolysis” effect occurring in the fountain. This may result in water which has a metallic taste to it or has a noticeable increase in the metallic content of the water.

When inspecting plumbing circuit, remember the line may be grounded some distance from the installation, and may occur outside the building or area in which the unit is being installed.

This condition can be avoided (in most cases) by using recommended materials during installation. Any drain fittings provided by the installer should be made of **plastic** which will *electronically isolate* the fountain from the remainder of the building’s plumbing circuits.

Patent zurn-elkay.com/patents

⚠ WARNING: Cancer and Reproductive Harm - www.P65Warnings.ca.gov

⚠ ADVERTENCIA: Cáncer y daño reproductivo - www.P65Warnings.ca.gov

⚠ AVERTISSEMENT: Cancer et effets néfastes sur la reproduction - www.P65Warnings.ca.gov

These products are designed to operate on 20 psi to 105 psi supply line pressure. Simultaneous operation of both bubblers on bi-level unit may not be possible depending on water supply pressure. If simultaneous operation is desired, please ensure a minimum of 50 psi supply

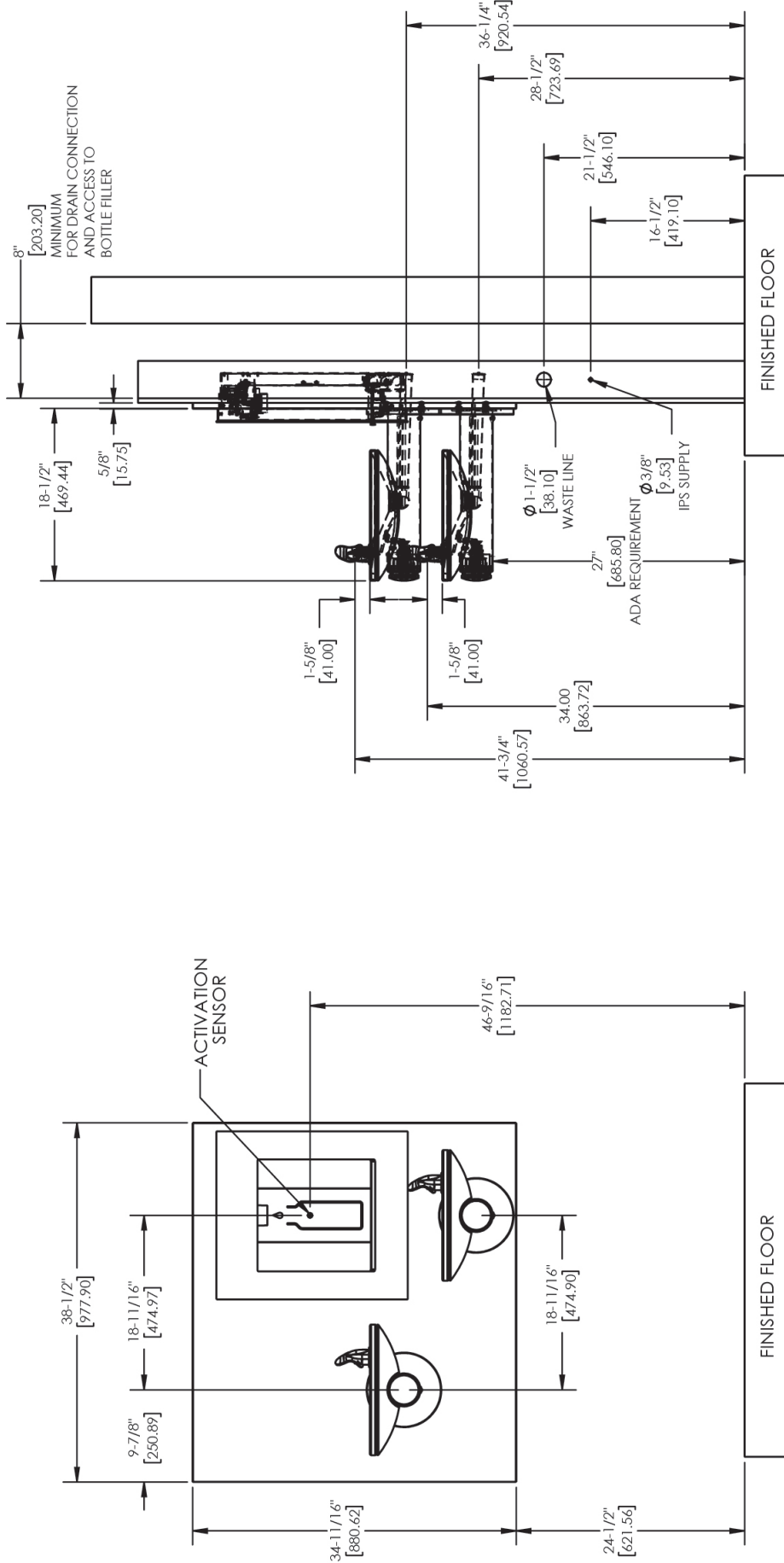


Figure 1 - Rough-in Dimensions

****NEW INSTALLATIONS MUST USE GROUND FAULT CIRCUIT INTERRUPTER *GFCI)**

REQUIRED TOOLS AND MATERIALS

These tables show special tools and/or additional materials (not provided) which are necessary to complete installation of these units:

Special Tools		
Item	Description	Quantity
	NONE	

Additional Materials Not Included		
Item	Description	Quantity
1	Unplated copper inlet pipe	1
2	Service Stop	1
3	90° 1-1/4" Drain Line	1
4	1-1/4" Tee Drain Line	1

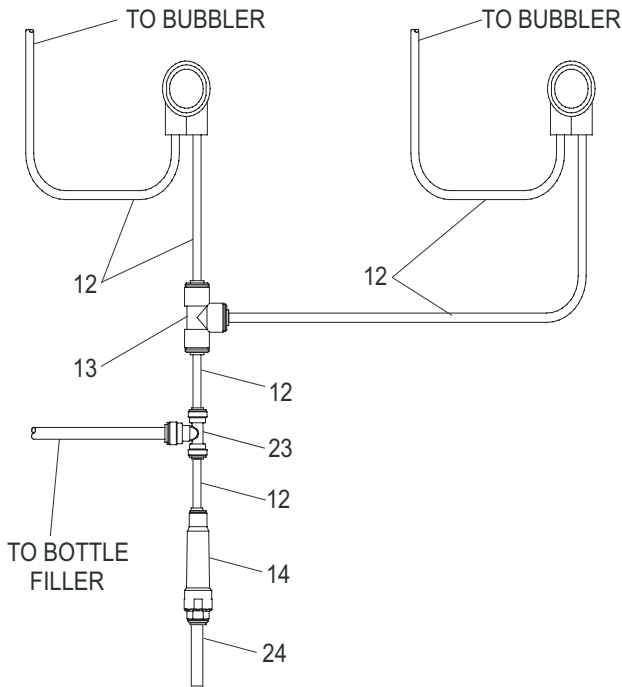


Figure 2 - EZLSSN-EDFPBMV117K Tube Routing

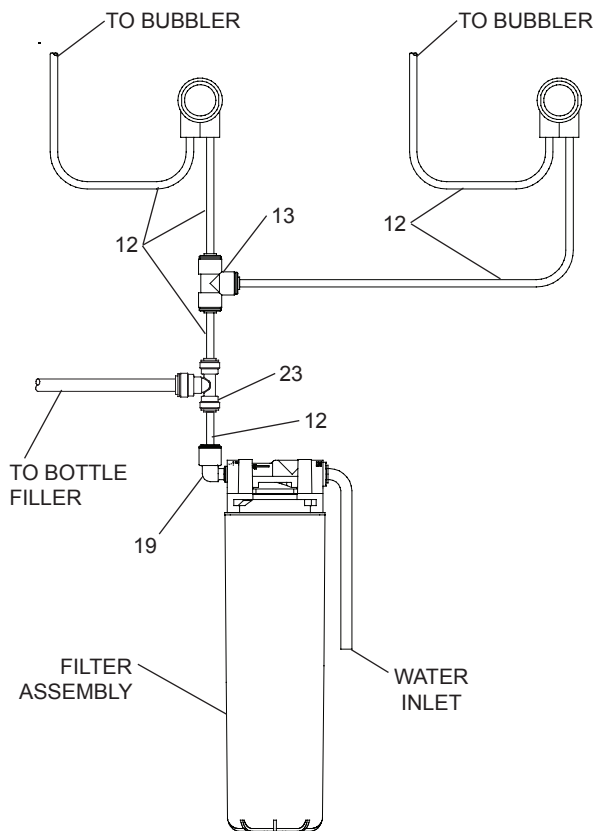


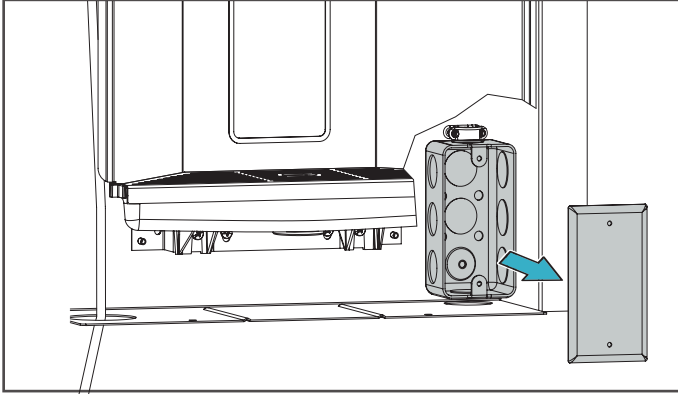
Figure 3 - LZLSSN-EDFPBMV117K Tube Routing

1. **Make** water supply connections. Install a shut-off valve and union connection to building water supply (valve and union not provided). Turn on water supply and flush the line thoroughly.

Caution: DO NOT SOLDER tubes inserted into the strainer or filter head as damage to the o-rings may result.

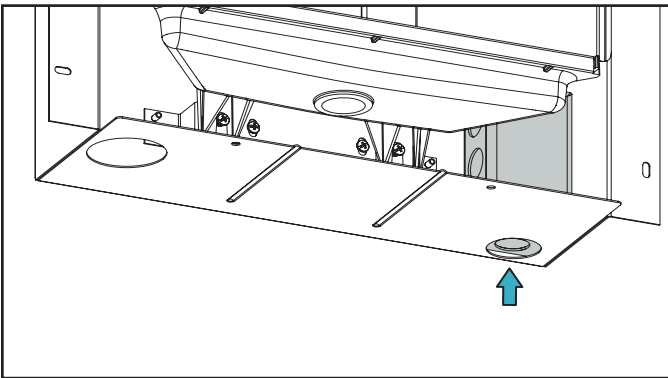
2. **Install** mounting frame (instructions supplied with mounting frame).
3. **(For LZLSSN-EDFPBMV117K)** Install the filter head to the bracket, then install filter bracket on mounting frame (Fig. 3), plumb from the filter outlet using the 1/4" elbow, poly tubing and 1/4 x 1/4 x 1/4" tee, install filter.
- 3a. **(For EZLSSN-EDFPBMV117K)** Install 1/4" tee, copper tubing and strainer per (Fig. 2).
4. **Install** supplied 4" poly tubing and armaflex to the outlet of the previously installed tee or strainer. Connect supplied 1/4 x 1/4 x 1/4 tee to the 4" poly tubing.
5. **Hang** main panel on mounting frame hanger. Make sure the poly tube do not get pinched between the panel & mounting frame. Ensure the panel engages at the top. Align fountain holes with mounting frame holes.
6. **Remove** protective coating from main panel.
7. **Installing water Dispenser** Place the unit into the stainless panel and frame. Align the holes in the water dispenser with the nuts in the panel. Attach the dispenser to the panel using four (4) supplied 1/4 x 20 screws.

8. **Locate** the electrical gang box, at the lower right-hand corner of the water dispenser and remove the cover.



CAUTION: Follow all safety practices and industry regulations and standards when connecting any electrical device. A minimum 15 AMP GFCI Circuit Breaker is required for safe installation.

9. **Connect** a 115 VAC, 60Hz power supply to the water dispenser. Route the wiring through the wall into the bottom of the electrical gang box.
- Route the appropriate electrical wiring through a wiring clamp into the gang box.



- Tighten the wiring clamp to prevent the wire from being pulled out of the gang box.
- Connect black wire to supplied voltage line (black) wire and the white wire to neutral.
- Use installer provided wire nuts to insulate the connections.
- If required by code a green grounding screw can be used to connect a grounding wire inside the gang box.
- Reinstall the gang box cover.

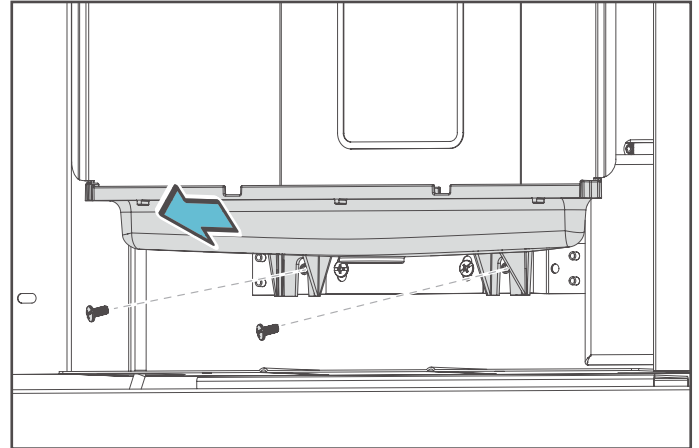
Note: Do not use a cord with a three prong plug to power this unit.

Connecting Catch Basin Waste Drain

Installing the drain is highly recommended to prevent basin overflow.

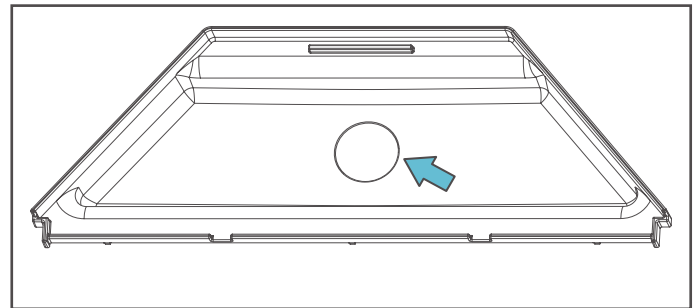
The following steps cover the installation of the drain.

- Remove the two screws attaching the drain basin to the water dispenser. Remove the drain basin.

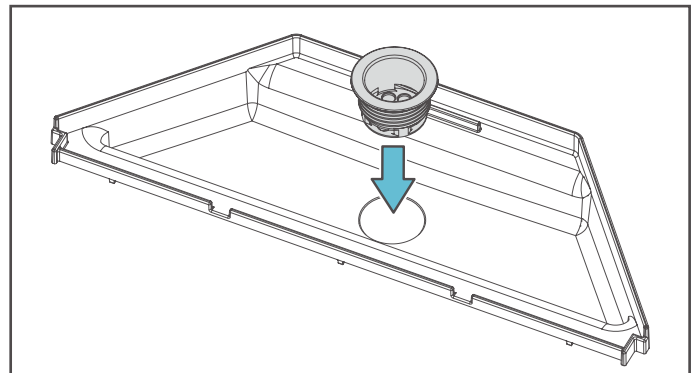


- Place the drain basin on a flat, hard surface, such as a piece of sacrificial wood. Carefully drill a hole in the basin using a 1" hole saw using the centering-dimple as a guide to center the hole saw.

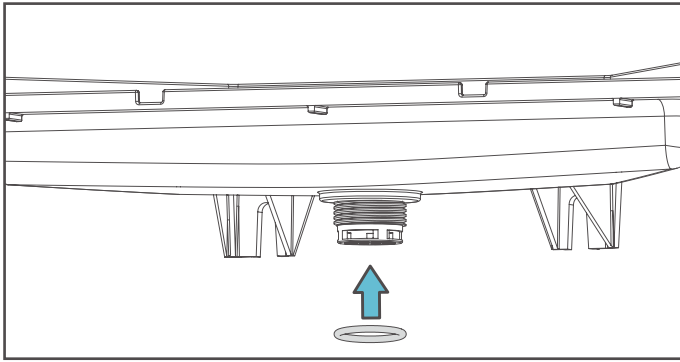
Note: Do not use a 1-1/8" hole saw as this will make the opening too large.



- Trial fit the strainer. If the strainer does not fit, carefully open the size of the hole. If it fits well, place a small amount of plumbers putty around the lip of the strainer flange and insert it into the hole.

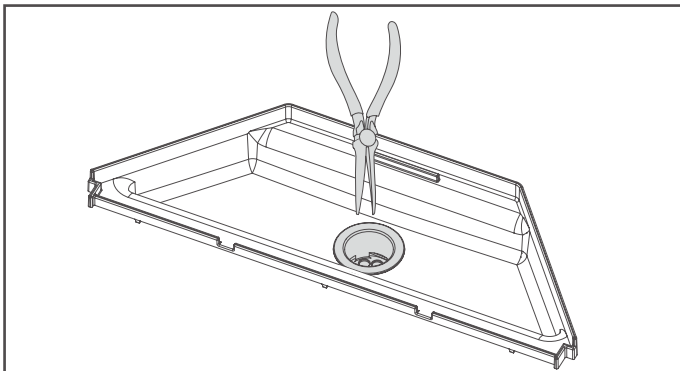
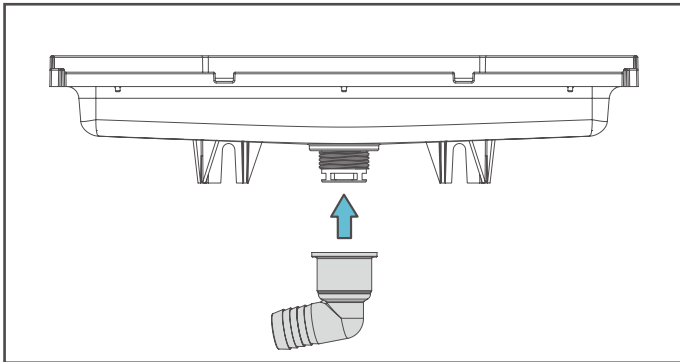


4. Install the O-ring over the strainer threads.

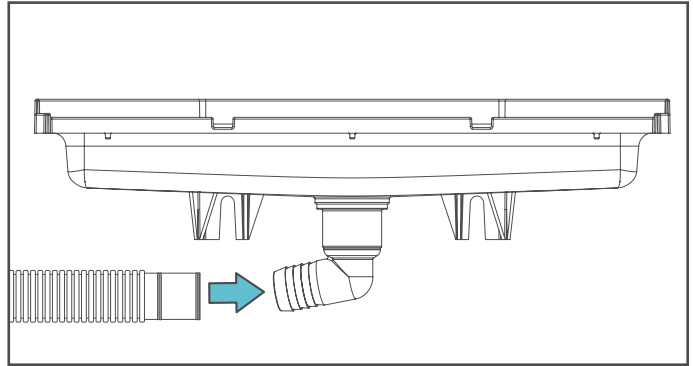


5. Thread the strainer into the drain adapter. Needle-nose pliers can be used to hold the drain adapter from the top while tightening. Ensure that the connection creates a watertight seal. The drain adapter must be facing to the left.

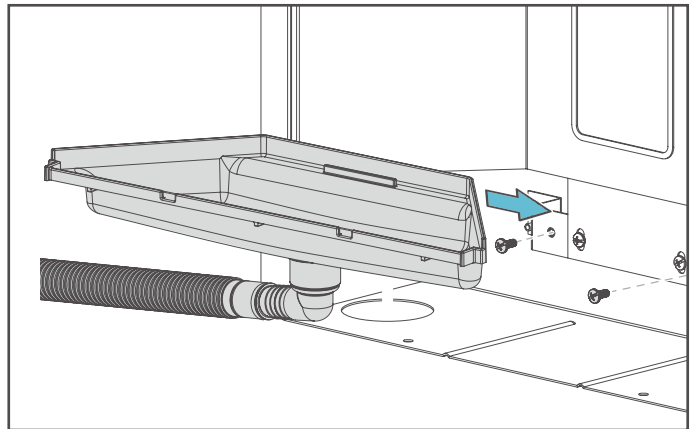
Note: *Twisting the strainer instead of the drain adapter can compromise the seal created by the plumber's putty.*



6. Attach one end of the 3/4 inch flexible drain hose to the 3/4 inch barbed drain adapter connection using the supplied hose clamp. The supplied flexible drain is 13 inches long. If a longer drain hose is required, it must be installer-supplied.



7. Place the drain basin back into the water dispenser and reinstall the two screws.



8. Connect the drain adapter into the household waste drain pipe.

If the p-trap is located inside a sealed walled, it must have permanently-glued joints. If the p-trap is in an accessible location, a standard non-glued p-trap is acceptable.

Install the water dispenser's front cover.

9. Line up the front panel with the dispenser frame and attach using the flathead screws and a 3/32" hex wrench.

10. Install the metal grate cover using the 4 Screws.

Note: *Always consult local plumbing codes prior to installation.*

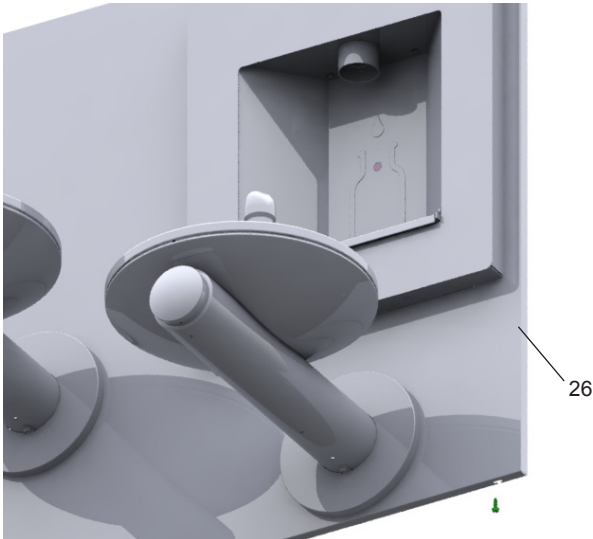
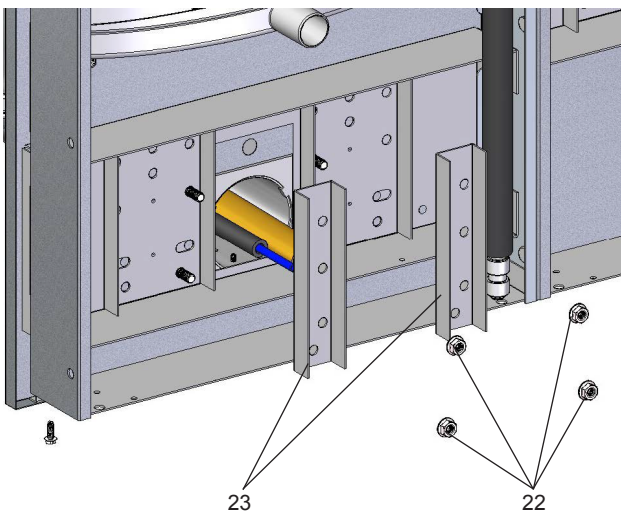
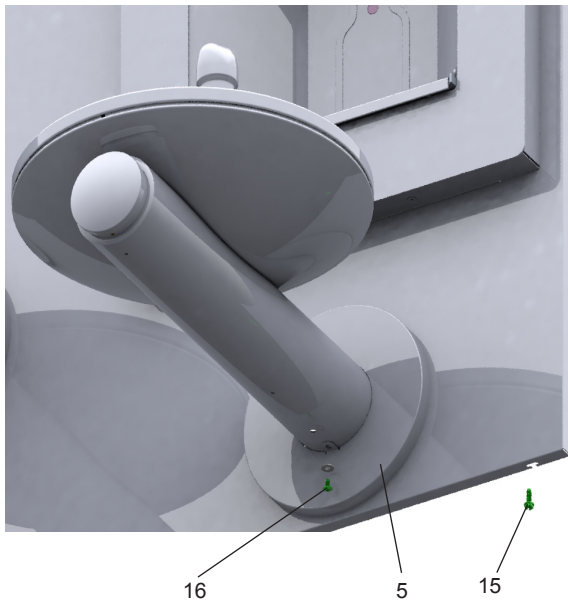


Figure 4 - Upper Panel Installation

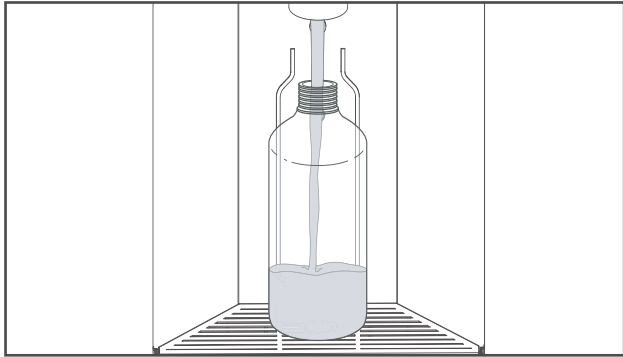


View From Rear

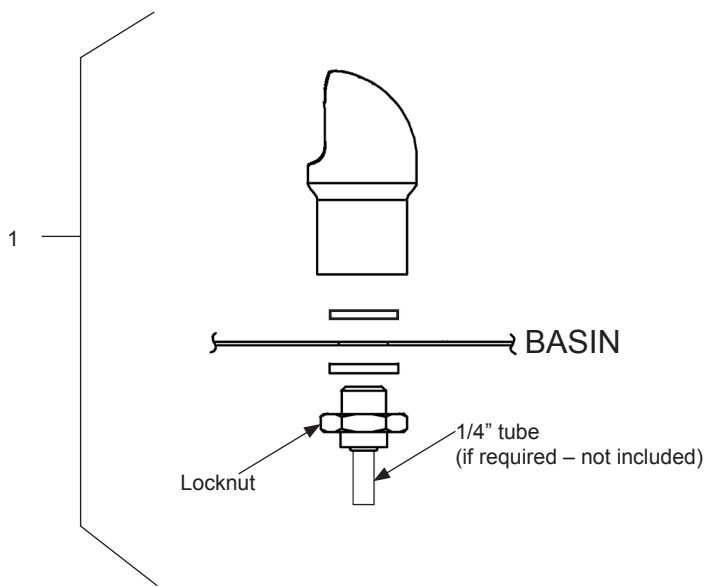
Figure 5 - Fountain Installation

10. **Install** fountains with (8) 5/16-18 HHMS & (8) 5/16-18 nuts (provided). Connect the 1/4" water lines from each fountain to the remaining openings on the tee (cut lines to fit as needed).
11. **Attach** waste tubes (1-1/4" O.D.) to 1-1/4" O.D. slip trap. Trap on the bottle filler side must be 1-1/2" O.D. (provided by others).
12. **Make** final water supply connections.
13. **These** products are designed to operate on 20-105 PSI supply line pressure. If inlet pressure is above 105 PSI, a pressure regulator must be installed in the supply line.

Caution: Any damage caused by connecting these products to a supply line with pressure lower than 20 PSI or higher than 105 PSI IS NOT covered under warranty.
14. **Verify** proper dispensing from the bottle filler by placing a cup, hand or any opaque object in front of sensor area and verify water dispenses. **Note:** the first initial dispenses might have air in the line which may cause a sputter. This will be eliminated once all air is purged from the line. A steady stream of water assures all air is removed. The sensor has a 13 second maximum ON time. It may be necessary to step away from the beam a few times to purge all air. Check for leaks.
15. **Check** stream height from bubbler. Stream height is factory set for 35 PSI supply. If supply pressure varies greatly from this, remove push button (Item 7 - Fig. 9) and adjust the screw on the regulator (Item 8 - Fig. 9). To remove push button, remove setscrew from bottom of sleeve (Item 19). Insert a small punch in screw hole and push up while grasping the push button and pull forward removing the push button. Clockwise adjustment will raise stream height and counterclockwise movement will lower stream height. For best adjustment stream should hit basin approximately 6-1/2" from the bubbler. Reassemble the push button by pushing in on button until the push button catches in the sleeve. Reinstall the setscrew (Item 19 in the sleeve).
16. **Install** the cover plates.
17. **Install** the bottom panel, tighten screws (Fig. 4).
18. **Optional:** Mount optional panels. Slide tongue of panel under edge of already installed panel. Tighten screws.



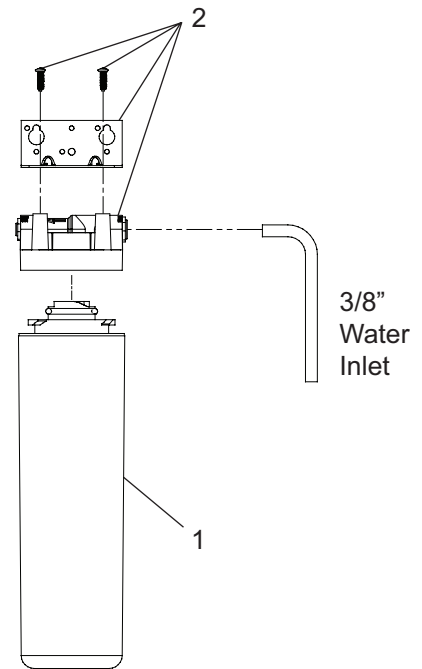
Once the installation is complete, the water has been turned on, and any trapped air has been bled from the system re-check for any water leaks.



VANDAL-RESISTANT BUBBLER DETAIL

NOTE:
When installing replacement bubbler and pedestal, tighten locknut only to hold parts snug in position. **Do Not overtighten.**

Figure 6 - Bubbler Details



**Filter Head Assembly
used after 01/01/2021**

Figure 7

WATERSENTRY® PLUS FILTER PARTS LIST (See Fig. 7)		
ITEM NO.	PART NO.	DESCRIPTION
1	51300C	Filter Assy-3000 Gal.
2	51469C	Assy-Filter & Brkt includes Fitr Head/ Mtg Brkt/John Guest Fittings/Screws

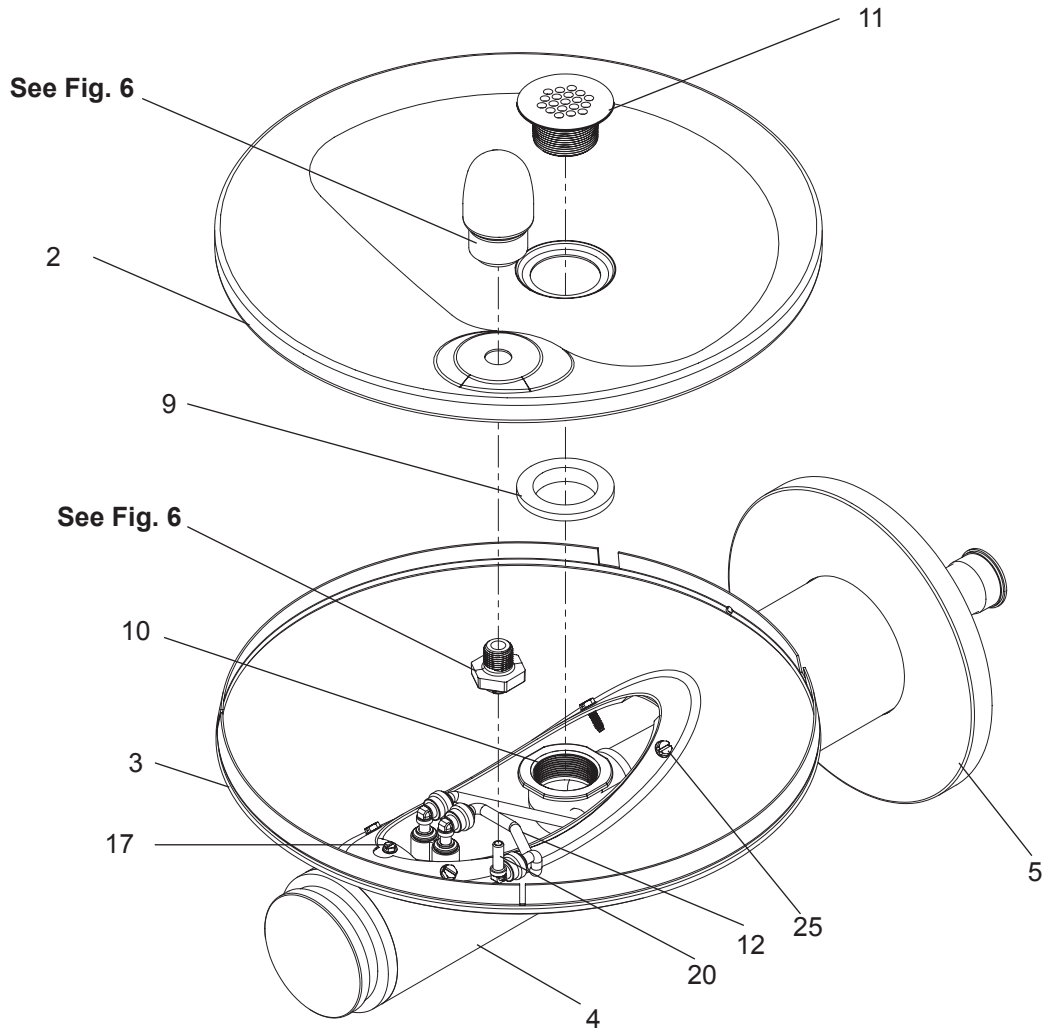


Figure 8 - Fountain Body Assembly

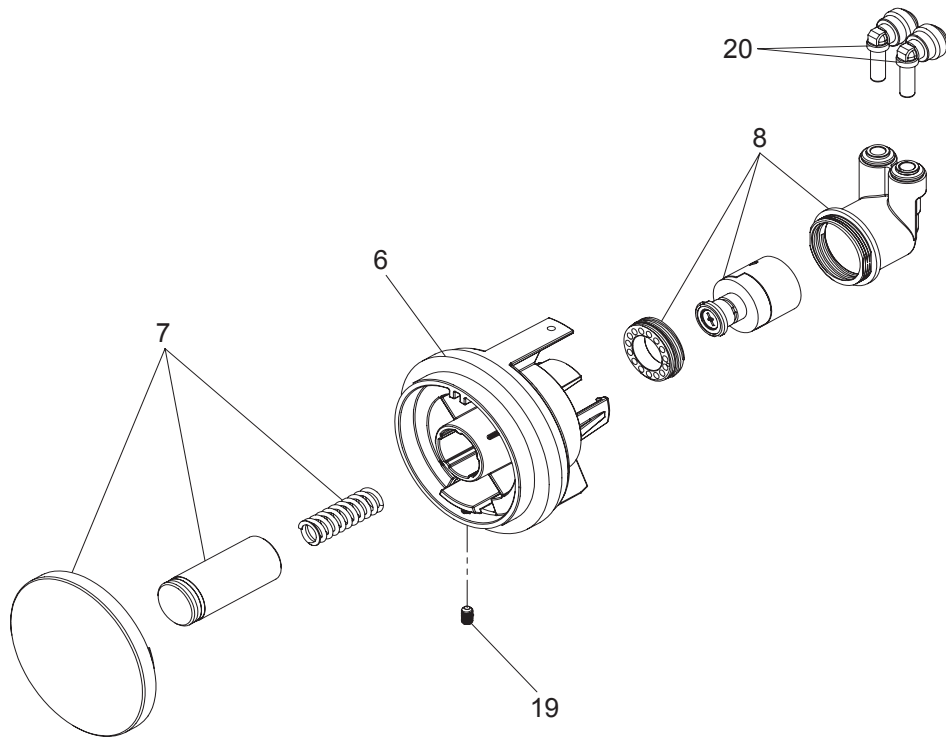


Figure 9 - Push Button Assembly

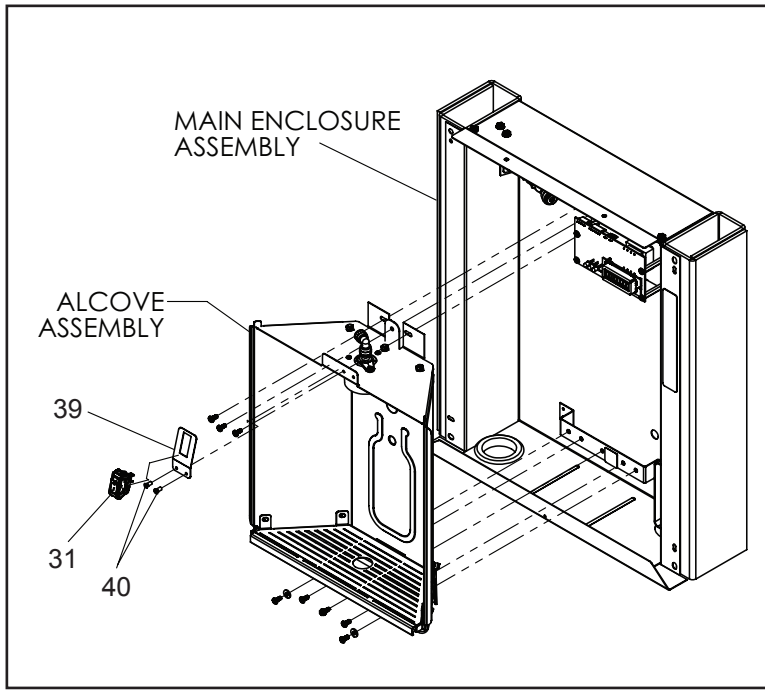


Figure 10

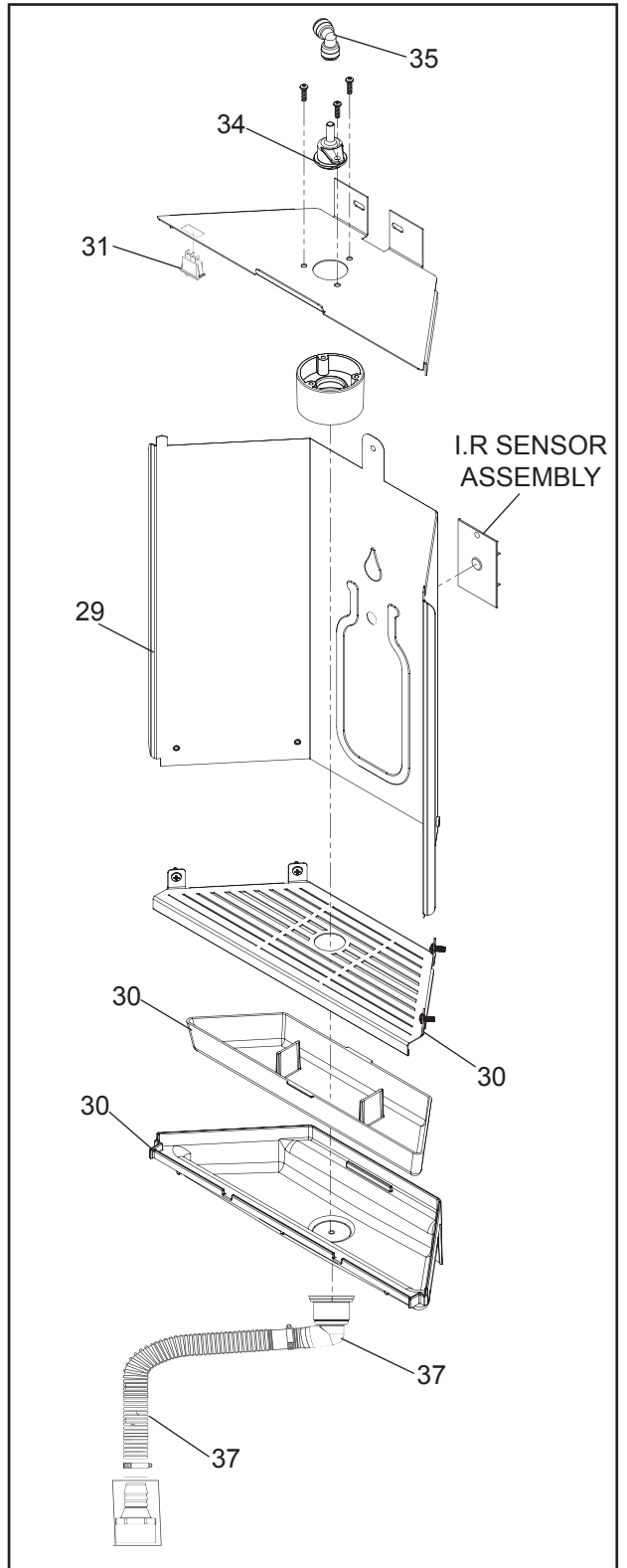
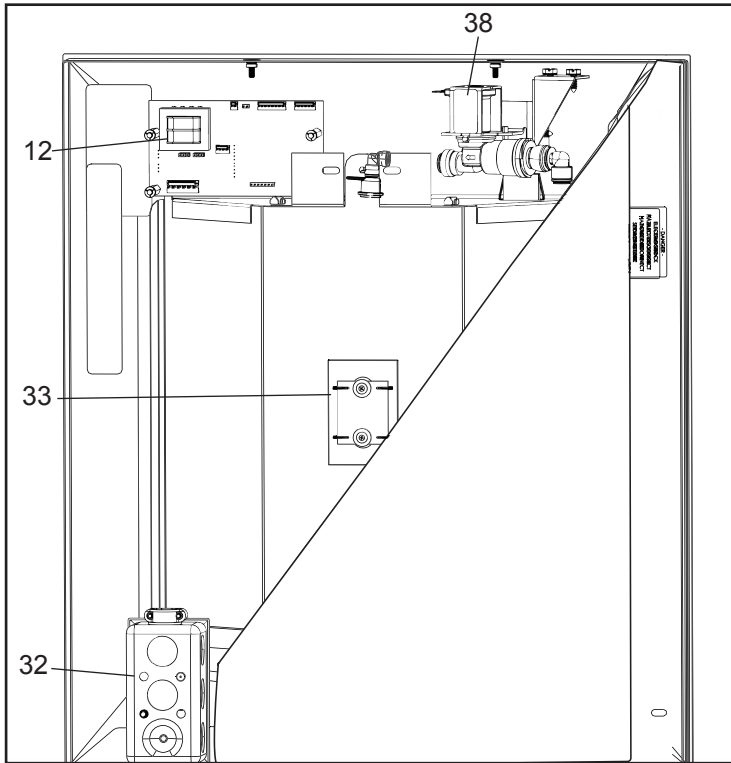


Figure 12 - Alcove Assembly



NOTE: Rear view shown with panel cut section

Figure 11 - Rear View of Water Dispenser

PARTS LIST

ITEM NO.	PART NO.	DESCRIPTION
1	98481C	Kit - Vandal-Resistant Bubbler Assy
2	28708C	Basin - Swirlflow
3	28473C	Lower Shell
4	45767C	Fountain Body
5	28343C	Cover Plate
6	45781C	Sleeve
7	98871C	Kit - Swirlflo Pushbutton/Spring
8	98530C	Kit - Regulator/Spring/Nut
9	56163C	Gasket - Drain
10	000000930	Assy - Drain/Tailpipe
11	45768C	Drain - Plug 1-1/2"
12	56092C	Poly Tubing (Cut To Length)
13	1000001994	Kit - Tee 1/4 (3 Pack)
14	55996C	Strainer
15	111008343890	Screw - #10-24 x .62 HHSM
16	70432C	Screw - #8-32 x .38 THSM
17	38417001	Screw - #8-18 x .37 HHSM
18	75560C	Screw - 5/16-18 x 1.00 HHMS
19	75632C	Setscrew - #10-32 x .38
20	1000001772	Kit - 70817C Elbow 1/4x1/4 (3 Pack)
21	111577343890	Nut - Hex 5/16-18
22	28395C	Bracket - Support
23	1000002062	Kit - Tee 1/4 x 1/4 x 3/8 (3 Pack)
24	62223C	Copper Tube - 3/8" Cut to Length
25	70288C	Screw - #10X.37 HHSM
26	2000001542	Back Panel Assembly

REPLACEMENT PART LIST

ITEM NO.	PART NO.	DESCRIPTION
NS	1000004698	Fitting - Hose to Trap
27	1000005397	KIT - Solenoid
28	1000005396	LED Bezel, KIT - Harness
29	1000001543	Alcove
30	1000005392	KIT - Drain Basin
31	1000005846	Switch - Rocker LIV
32	30004C	Box - Conduit
33	1000005393	Lens, KIT - IR
34	56331C	Connector
35	70793C	Elbow 1/4 O.D. X 90
NS	51300C	3000 Gallon Filter
36	1000005454	KIT - Filter Head and Bracket Assembly
NS	1000001465	KIT - Replacement Bezel SS
37	1000001812	KIT - Bottle Filler Drain
38	1000005394	KIT - Control Board
39	2000001599	LIV Rocker Switch Holder Bracket
40	70806C	RIVET-POP 1/8

NS = NOT SHOWN

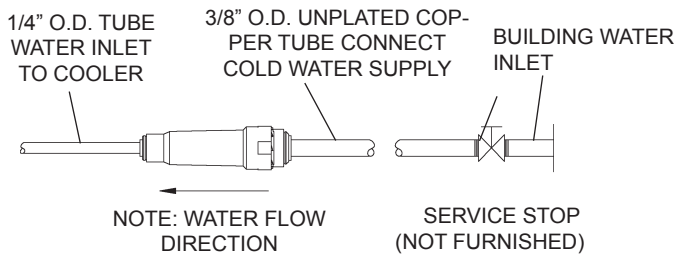


Figure 13 – Water Supply Connections

FOR PARTS, CONTACT YOUR LOCAL DISTRIBUTOR OR CALL 1.800.834.4816
REPAIR SERVICE INFORMATION TOLL FREE NUMBER 1.800.260.6640

ELKAY MANUFACTURING COMPANY • 1333 BUTTERFIELD ROAD SUITE 200 DOWNERS GROVE, IL 60515 • 630.574.8484 • www.elkay.com

Installation Package

The components for installation are packed in two separate boxes, regardless of the type of unit being installed. The boxes contain the following:

Box No. 1: Wall Frame(s)

Box No. 2: Fountain(s), Panels and Bottle Filler

Additional materials, as noted in the Parts List, are also shipped in these boxes.

TROUBLESHOOTING & MAINTENANCE

Orifice Assembly: Mineral deposits on orifice can cause water flow to spurt or not regulate. Mineral deposits may be removed from the orifice by poking with a small round file not over 1/8" diameter, or using a small diameter wire.

CAUTION: DO NOT file or cut orifice material.

Stream Regulator: If orifice is clean, regulate flow as in Step 14 of the installation instructions. If replacement is necessary, see parts list for correct regulator part number.

Actuation of Quick Connect Water Fittings: Cooler is provided with lead-free connectors which utilize an o-ring water seal. To remove tubing from the fitting, relieve water pressure, push in on the gray collar while pulling on the tubing. (See Fig. 14) To insert tubing, push tube straight into fitting until it reaches a positive stop (approximately 3/4").

OPERATION OF QUICK CONNECT FITTINGS

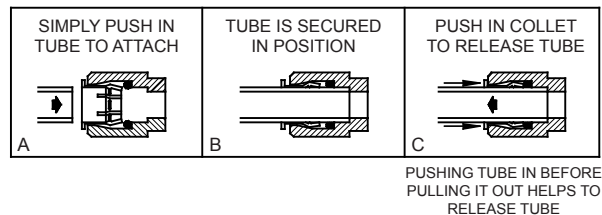


Figure 14 – Quick Connect Fittings