

ELKAY®

INSTALLATION & USE MANUAL

SOFT SIDES® Fountains with Vandal Resistant Bubblers and Surface Mount Vandal Resistant Water Dispenser



INSTALLER



CAUTION:

Review these instructions before beginning installation. Be sure that installation conforms to all plumbing, electrical and other applicable codes.



WARNING:

When installation is complete, ensure these instructions are left in the plastic bag provided inside the installed unit for future reference.



WARNING:

Service to be performed by authorized service personnel only.

NOTE: It is common practice to ground electrical hardware such as telephones, computers and other devices to available water lines. This can, however, cause electrical feedback in the plumbing circuit, which results in an "electrolysis" effect occurring in the fountain. This may result in water which has a metallic taste to it or has a noticeable increase in the metallic content of the water.

When inspecting plumbing circuit, remember the line may be grounded some distance from the installation, and may occur outside the building or area in which the unit is being installed.

This condition can be avoided (in most cases) by using recommended materials during installation. Any drain fittings provided by the installer should be made of **plastic** which will electronically isolate the fountain from the remainder of the building's plumbing circuits.

(L)EZVRSM-EDFPVM217D1LK ROUGH-IN

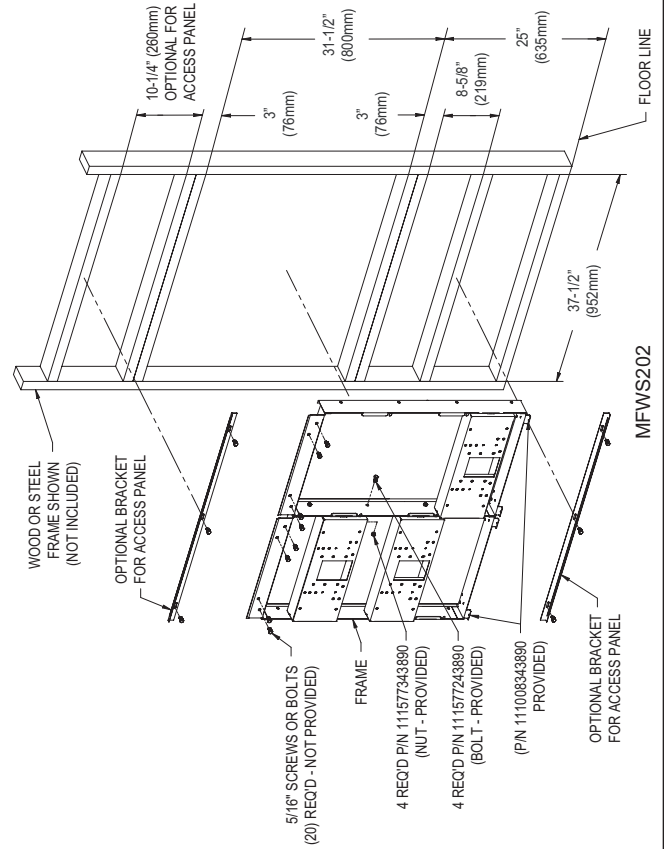
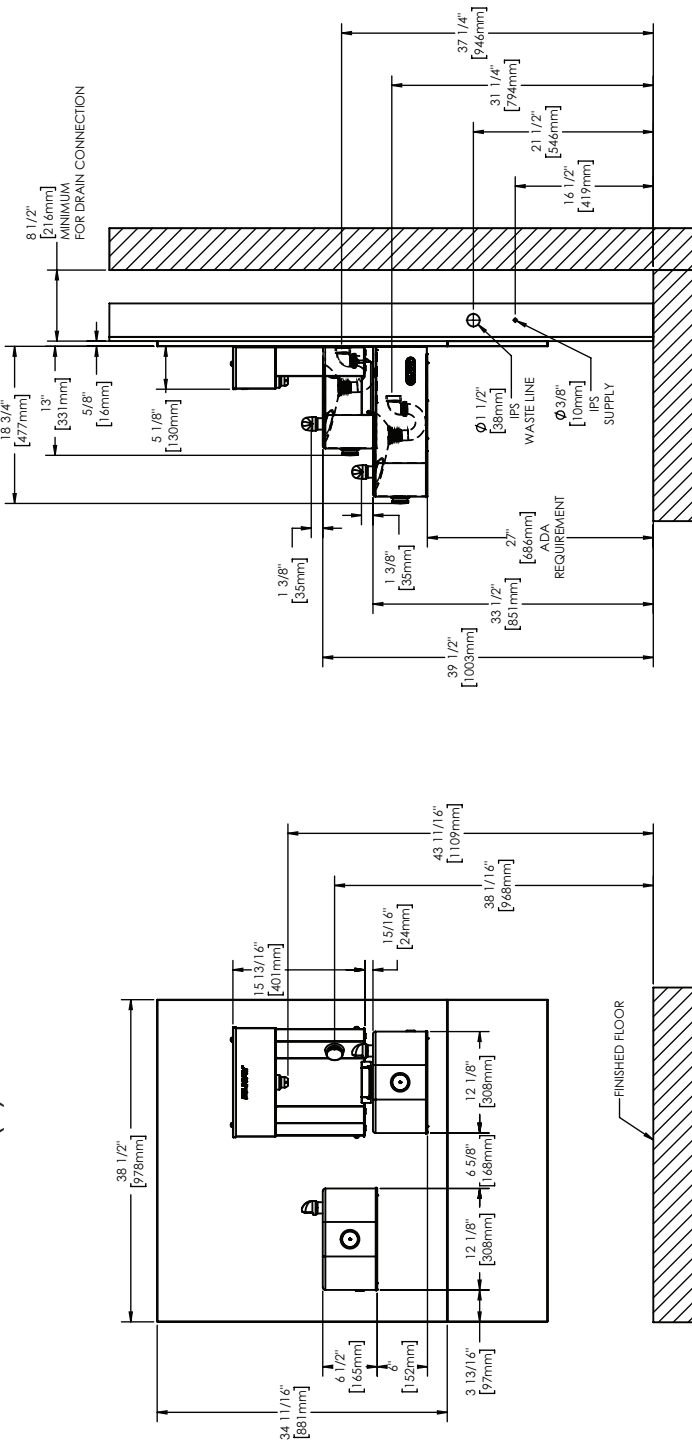


Figure 2 - Rough-in Dimensions

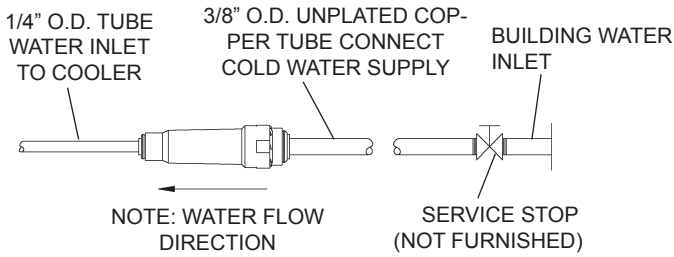


Figure 3 – Water Supply Connections

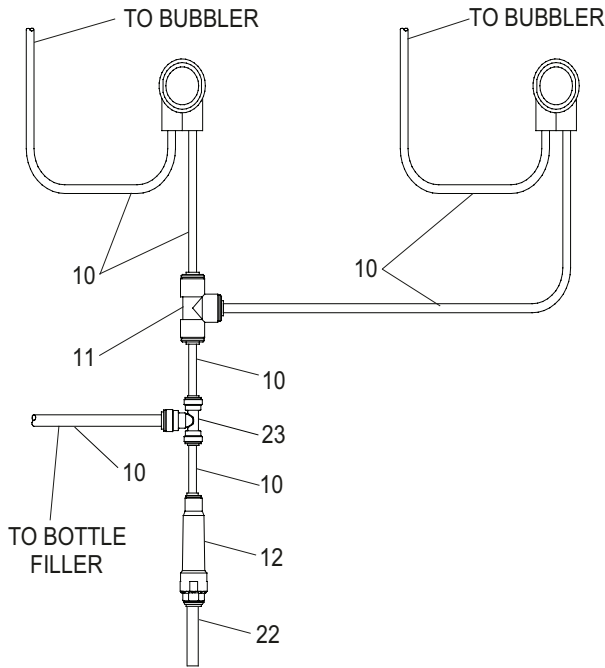


Figure 4 - Tube Routing Non - Filtered

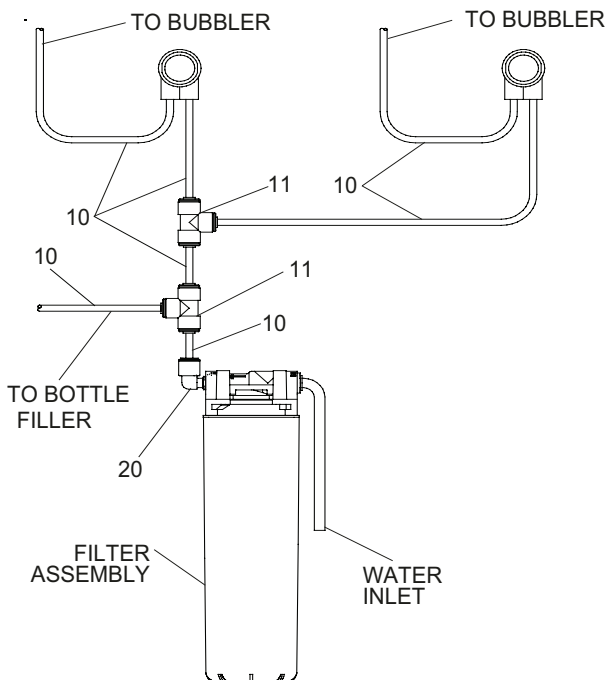


Figure 5 - Tube Routing Filtered

REQUIRED TOOLS AND MATERIALS

These tables show special tools and/or additional materials (not provided) which are necessary to complete installation of these units:

Special Tools		
Item	Description	Quantity
	NONE	

Additional Materials Not Included		
Item	Description	Quantity
1	Unplated copper inlet pipe	1
2	Service Stop	1
3	90° 1-1/4" Drain Line	1
4	1-1/4" Tee Drain Line	1

1. **Make** water supply connections (Fig. 3). Install a shut-off valve and union connection to building water-supply (valve and union not provided). Turn on water supply and flush the line thoroughly.

Caution: DO NOT SOLDER tubes inserted into the strainer as damage to the o-rings may result.

2. **Install** mounting frames or wall mounting plate (instructions supplied with mounting frame or wall plate).

3. **For Non-filtered versions** - Install 1/4 X 1/4 X 3/8" tee, copper tubing and strainer per (Fig. 4).

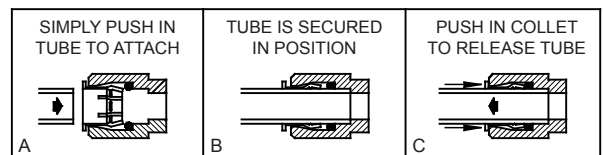
4. **For Filtered versions** - Install the filter head, 1/4 X 1/4 X 3/8" tee (Fig. 5).

5. **Install** supplied 4" poly tubing and armflex to the outlet of the previously installed tee or strainer. Connect supplied 1/4 X 1/4 X 1/4" tee to the 4" poly tubing.

6. **Hang** main panel on mounting frame or wall plate hanger. Make sure the poly tube does not get pinched between the panel & mounting frame or wall plate. Ensure the panel engages at the top. Align fountain holes with mounting frame holes.

7. **Remove** protective coating from main panel.

OPERATION OF QUICK CONNECT FITTINGS



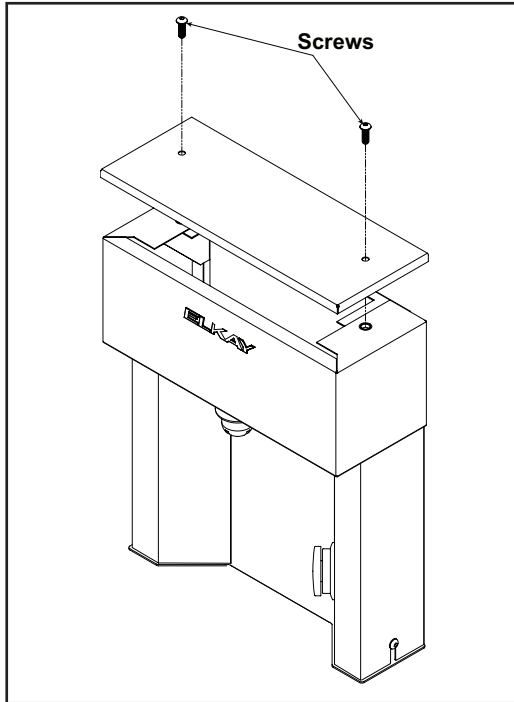
PUSHING TUBE IN BEFORE PULLING IT OUT HELPS TO RELEASE TUBE

Figure 6 – Quick Connect Fittings

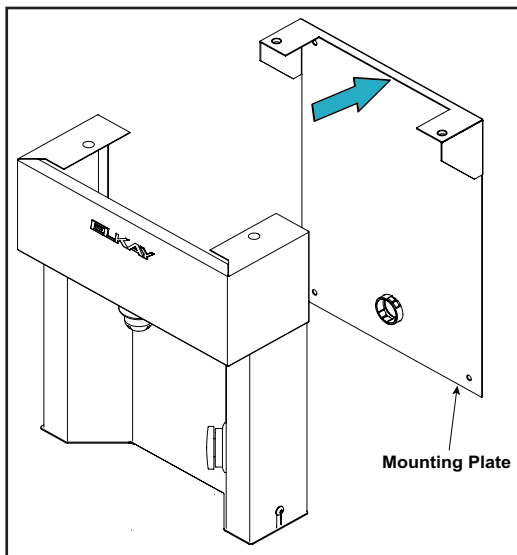
Installation Procedure of Bottle Filler

1. Remove the two (2) mounting screws securing the top cover to the bottle filler with 5/32" Allen wrench. Remove the top cover.

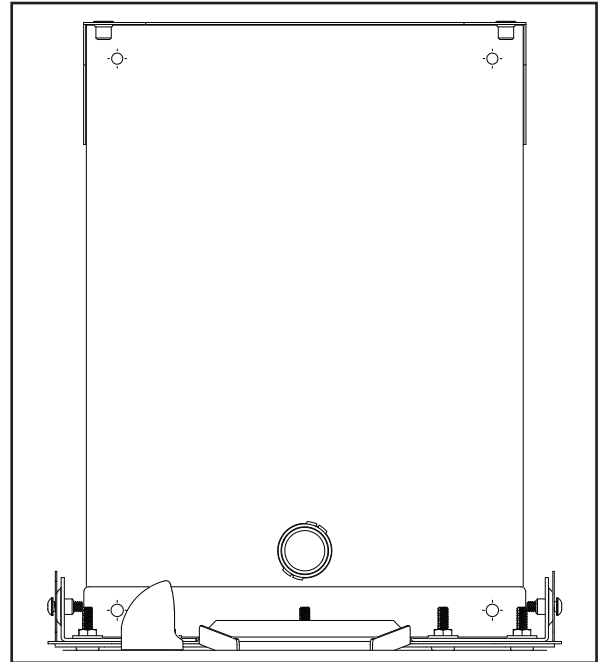
Note: Do not discard mounting screws, they will be needed to reinstall the top cover.



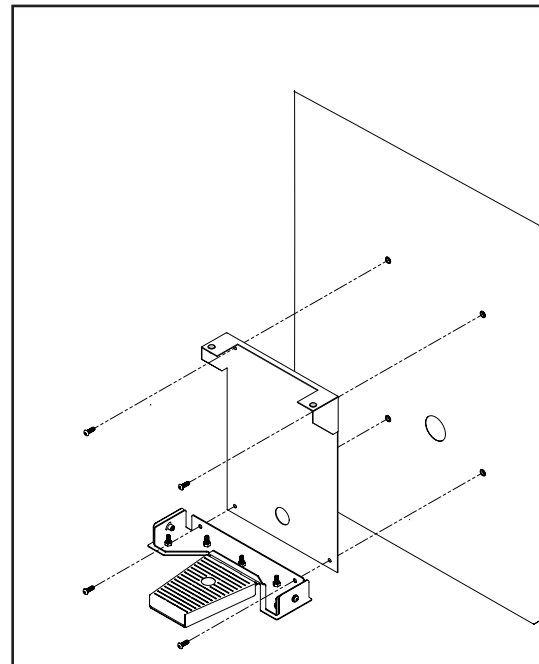
2. Remove the wall mounting plate.



3. Place mounting plate and drain tray against the stainless panel. Align the holes in the mounting plate and drain tray with the nuts in the panel.



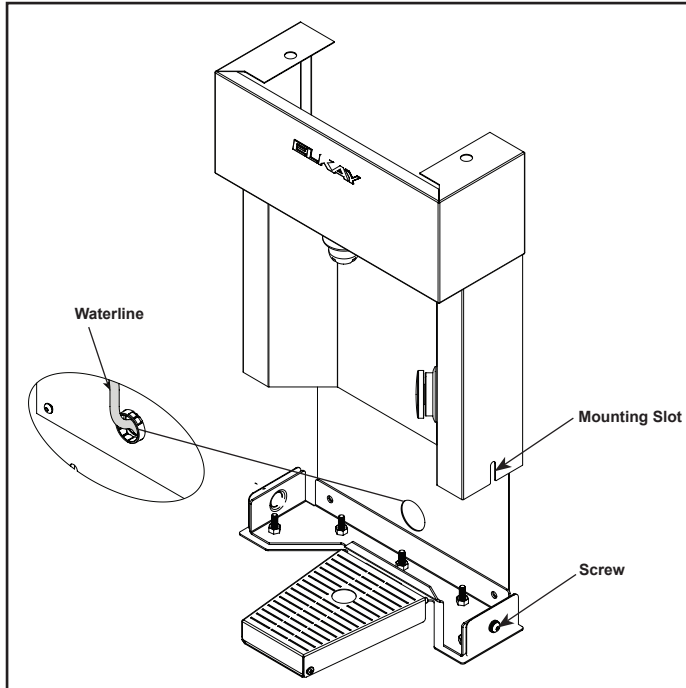
4. Install the wall mounting plate and drain tray to the stainless panel using four (4) 1/4-20 bolts (supplied) through the mounting holes.



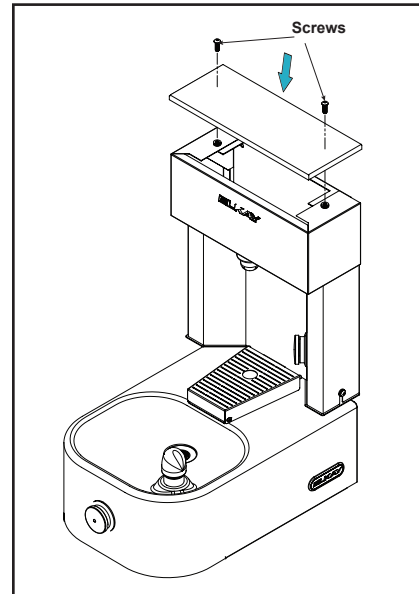
5. Before installing the bottle filler, install the provided poly lock clips. Refer to Figure: BOTTLE FILLER PLUMBING (Page 9) for poly lock clip locations. Install the bottle filler by aligning the slots to two (2) mounting screws one on each side of the bottle filler and slide down. Tighten the screws to secure the bottle filler.

Note: Make sure to route water line through the hole on the mounting plate before securing the bottle filler.

CAUTION Do not over tighten screws.



6. Install the top cover on the bottle filler using two (2) mounting screws.



7. Connect the 3/8" water line from the bottle filler to the opening on the tee (cut line to fit as needed).

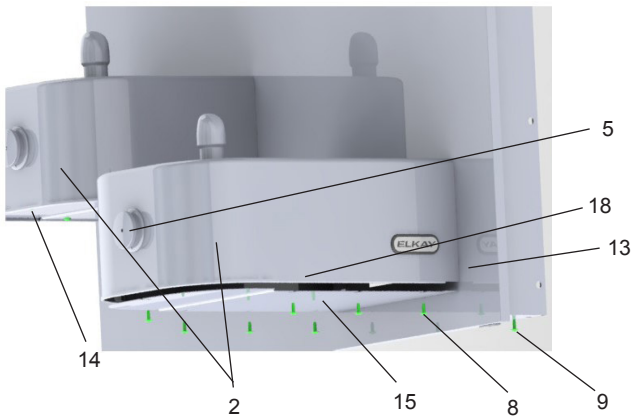


Figure 7 - Upper Panel Installation

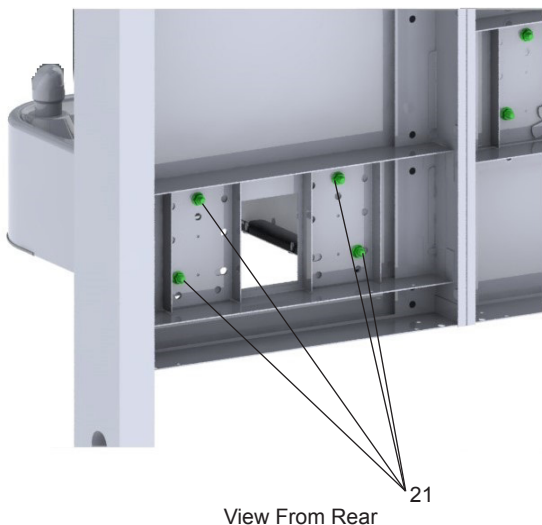
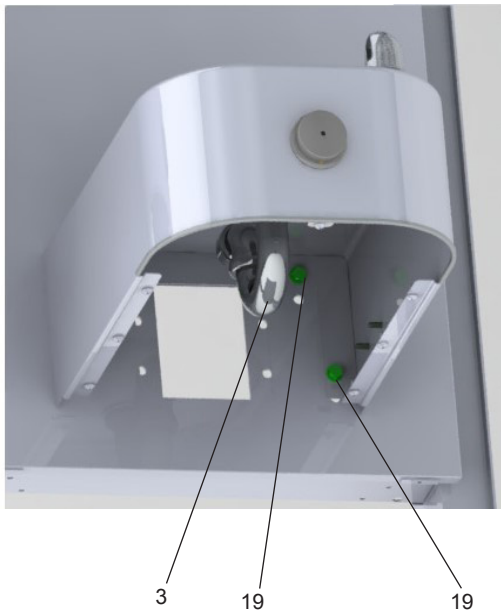


Figure 8 - Fountain Installation

1. Mounting the fountains

Install fountains with (8) 5/16-18 HHMS & (8) 5/16-18 nuts (provided) (Fig.8).

NOTE: If installing using the wall mounting plate only use the (8) 5/16-18 bolts to mount.

2. Connect the 1/4" water lines from each fountain to the remaining openings on the tee (cut lines to fit as needed).

3. **Attach** waste tubes (1-1/4" O.D.) to 1-1/4" O.D. slip trap. Trap on the bottle filler side must be 1-1/2" O.D. (provided by others).

4. **These** products are designed to operate on 20-105 PSI supply line pressure. If inlet pressure is above 105 PSI, a pressure regulator must be installed in the supply line.

Caution: Any damage caused by connecting these products to a supply line with pressure lower than 20 PSI or higher than 105 PSI IS NOT covered under warranty.

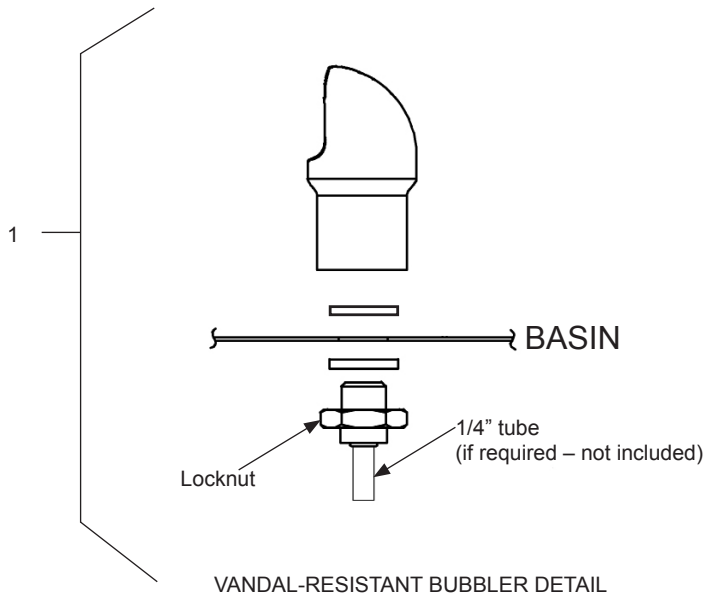
7. **Install** the bottom cover plates on fountain (Fig. 7).

8. **Tighten** back panel screws (Item 9 - Fig. 7).

9. **Optional:** Mount optional panels. Mount bracket on wall per rough-in instructions. Slide tongue of panel under edge of already installed panel. Tighten screws.

Once the installation is complete, the water has been turned on, and any trapped air has been bled from the system re-check for any water leaks.

Once the installation is complete, the water has been turned on, and any trapped air has been bled from the system re-check for any water leaks.



NOTE:
When installing replacement bubbler and pedestal, tighten locknut only to hold parts snug in position. **Do Not overtighten.**

Figure 9 - Bubbler Details

PARTS LIST		
ITEM NO.	PART NO.	DESCRIPTION
1	98481C	Kit - Vandal-Resistant Bubbler Assy
2	28782C	Fountain Arm - Short
	28783C	Fountain Arm - Long
3	LK464	Drain
4	98530C	Kit - Regulator/Nut/Holder
5	45960C	Push Button
6	45663C	Push Button Sleeve
7	75672C	Screw - Cap #6-32 x 5/16
8	112627543890	Screw - #10-24 x .50 PHTC
9	111008343890	Screw - #10-24 x .62 HHSM
10	56092C	Poly Tubing 1/4" (Cut To Length)
11	1000001994	Kit - Tee 1/4 x 1/4 x 1/4 (3 Pack)
12	55996C	Strainer
13	2000001616	Back Panel Assembly
14	55000661	Bottom Cover Plate - Short
15	55000665	Bottom Cover Plate - Long
16	40045C	Hex Nut
17	28823C	Regulator Mounting Bracket Edge
18	56280C	Trim - Chrome
19	75560C	Screw - 5/16-18 x 1.00 HHMS
20	1000001772	Kit - Elbow 1/4 x 1/4 (3 Pack)
21	111577343890	Nut - Hex 5/16-18
22	62223C	Copper Tube - 3/8" Cut to Length
23	1000002062	Kit - Tee 1/4 x 1/4 x 3/8 (3 Pack)

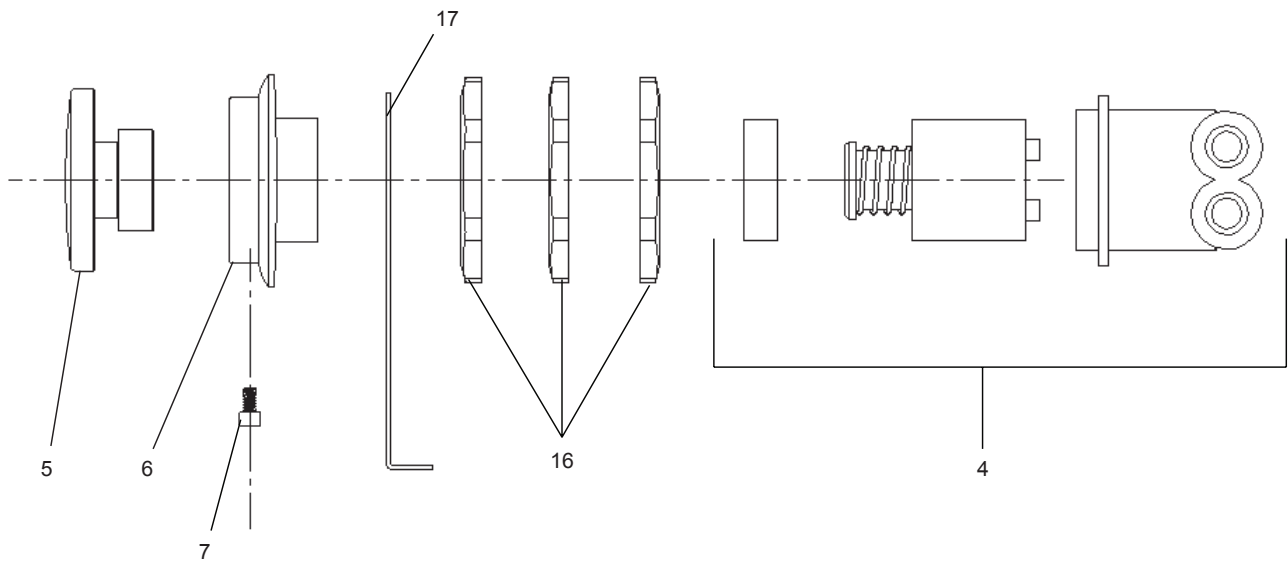
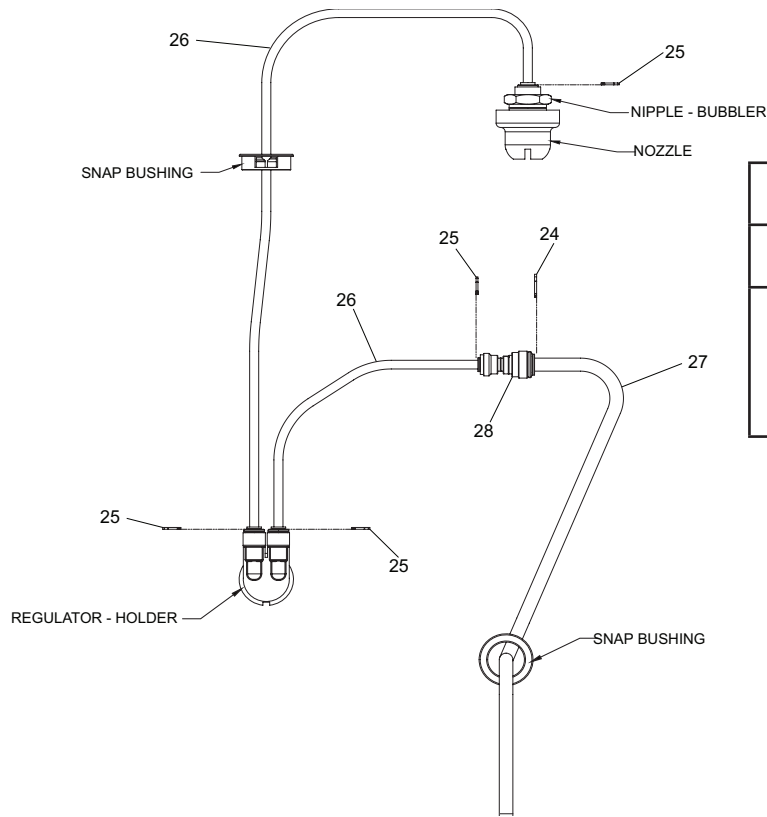


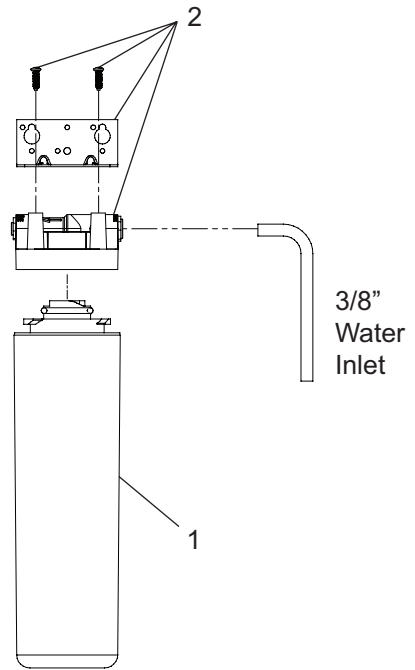
Figure 10 - Fountain Push Button Assembly



PARTS LIST		
ITEM NO.	PART NO.	DESCRIPTION
24	2000001122	3/8" Red Locking Clip
25	2000001123	1/4" Red Locking Clip
26	55994C	Tube-Poly 1/4x.040 Wall
27	56307C	Tube-Poly 3/8x.062 Wall
28	70745C	3/8 X 1/4 Union

Figure 11 - Bottle Filler Plumbing

Note: Locking clips (item 24 and 25) are provided with unit, but not installed. Installer is responsible for assembly of locking clips.



**Filter Head Assembly
used after 01/01/2021**

Figure 12

WATERSENTRY® PLUS FILTER PARTS LIST (See Fig. 12)		
ITEM NO.	PART NO.	DESCRIPTION
1	51300C	Filter Assy-3000 Gal.
2	51469C	Assy-Filter & Brkt includes Fitr Head/ Mtg Brkt/John Guest Fittings/Screws

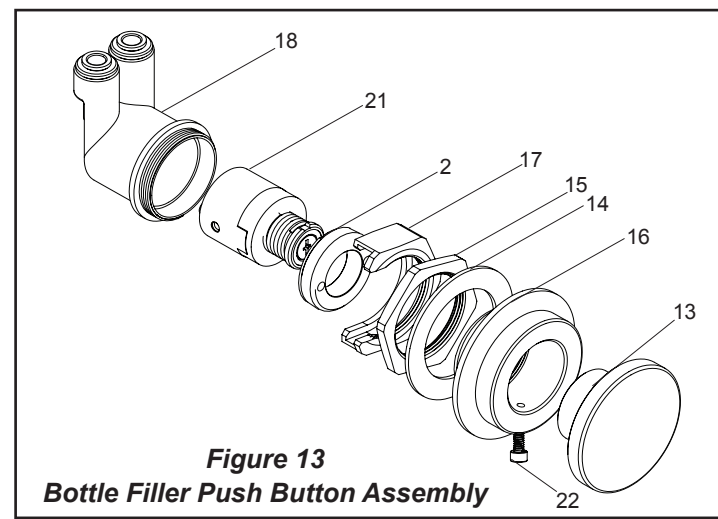


Figure 13
Bottle Filler Push Button Assembly

BOTTLE FILLER PARTS LIST		
ITEM NO.	PART NO.	DESCRIPTION
1	000000178	"O"- Ring - 1.35" ID X 1.43" OD
2	10031C	1-1/8-24 Retaining Nut
3	100322740560	Gasket Black .68 X 1.03
4	56159C	Nipple Bubbler 1.11"
5	15040C	Nozzle Assembly
6	2000001099	Back Plate VR BF
7	0000000035	Filler Plate VR BF
8	2000001613	Drain Try
9	2000001109	Top Cover
10	2000001111	VR-BF Tower ASSY
11	2000001107	Tower Wrapper Mounting
12	2000001110	Tower Lower MTG Assembly
13	45960C	Button - Push W/O Hole
14	28308C	Washer.Spacer 2.00 OD
15	40045C	Nut-Hex 1-5/16"
16	45663C	Sleeve - Push Button Guide
17	45736C	Nut - Reg. Mount
18	50985C	Holder - Regulator
19	56305C	Gasket - VR Bubbler
20	56332C	Snap Bushing 1-3/8
21	61313C	Regulator W/Spring
22	75672C	Screw Cap #6-32
23	75729C	1/4-20 X .75 Socket Button Head Screw
24	75744C	1/4-20 CAL Style Rivet Nut
25	P05031	Full Flow Hidden Aerator
26	96810C	Data Label
27	70018C	Nut-Hex # 1/4-20
28	0000000179	Washer - Sealing .26" ID X .50" OD
29	1000002460	Label - Service

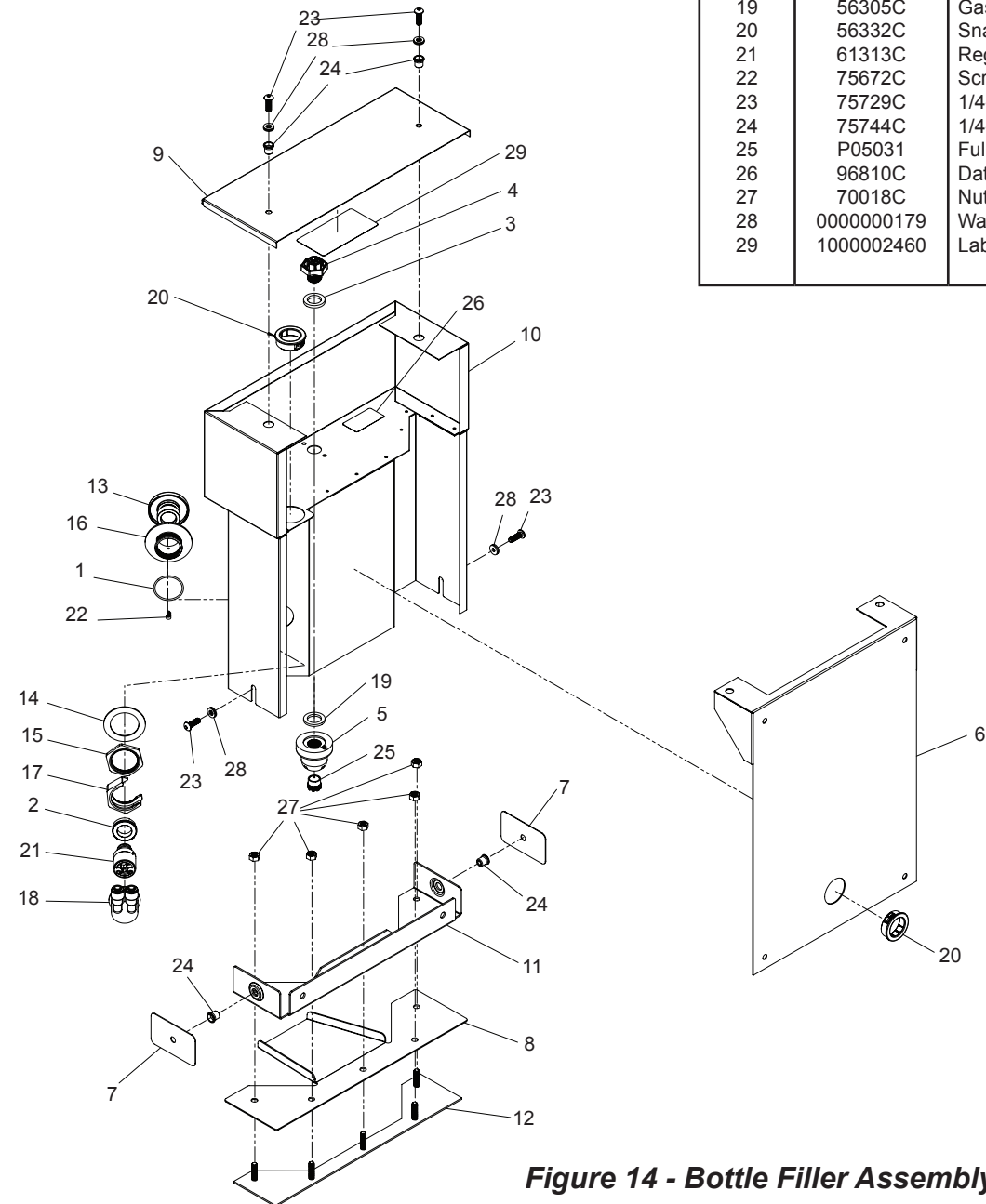


Figure 14 - Bottle Filler Assembly

Installation Package

The components for installation are packed in three separate boxes, regardless of the type of unit being installed. The boxes contain the following:

Box No. 1: Wall Frame(s) / Wall Plate

Box No. 2: Fountain(s), Arm(s) and Panels

Box No. 3: Water Dispenser

Additional materials, as noted in the Parts List, are also shipped in these boxes.

TROUBLESHOOTING & MAINTENANCE

Orifice Assembly: Mineral deposits on orifice can cause water flow to spurt or not regulate. Mineral deposits may be removed from the orifice by poking with a small round file not over 1/8" diameter, or using a small diameter wire.



CAUTION:

DO NOT file or cut orifice material.

Stream Regulator: If orifice is clean, regulate flow as in Step 14 of the installation instructions. If replacement is necessary, see parts list for correct regulator part number.

Actuation of Quick Connect Water Fittings: Cooler is provided with lead-free connectors which utilize an o-ring water seal. To remove tubing from the fitting, relieve water pressure, push in on the gray collar while pulling on the tubing. (See Fig. 5) To insert tubing, push tube straight into fitting until it reaches a positive stop (approximately 3/4").

FOR PARTS, CONTACT YOUR LOCAL DISTRIBUTOR OR CALL 1.800.834.4816
REPAIR SERVICE INFORMATION TOLL FREE NUMBER 1.800.260.6640

ELKAY MANUFACTURING COMPANY • 1333 BUTTERFIELD ROAD SUITE 200 DOWNERS GROVE, IL 60515 • 630.574.8484 • www.elkay.com