

**PRODUCT SPECIFICATIONS**

Cane Apron for EHW Stainless Steel. Overall dimensions are 11-7/8" x 17-3/4" x 6-1/8". Made of Stainless Steel.

<b>Material:</b>	Stainless Steel
<b>Finish:</b>	Stainless Steel
<b>Dimensions:</b>	11-7/8" x 17-3/4" x 6-1/8"
<b>Shipping Weight:</b>	15 lbs.

**Special Note:** For use with EHW(M) models.

- Cane touch apron designed for use in specific bi-level applications when coolers or bottle fillers are installed on an exposed wall
- For use with EHW(M) models



**Included with Product: Cane apron assembly**

A Century of Tradition and Quality.

For more than 100 years, Elkay has been making innovative products and providing exceptional customer care. We take pride in offering plumbing products that make life easier, inspire change and leave the world a better place.



[Installation Instructions \(PDF\) - 98333C](#)

PART: \_\_\_\_\_ QTY: \_\_\_\_\_

PROJECT: \_\_\_\_\_

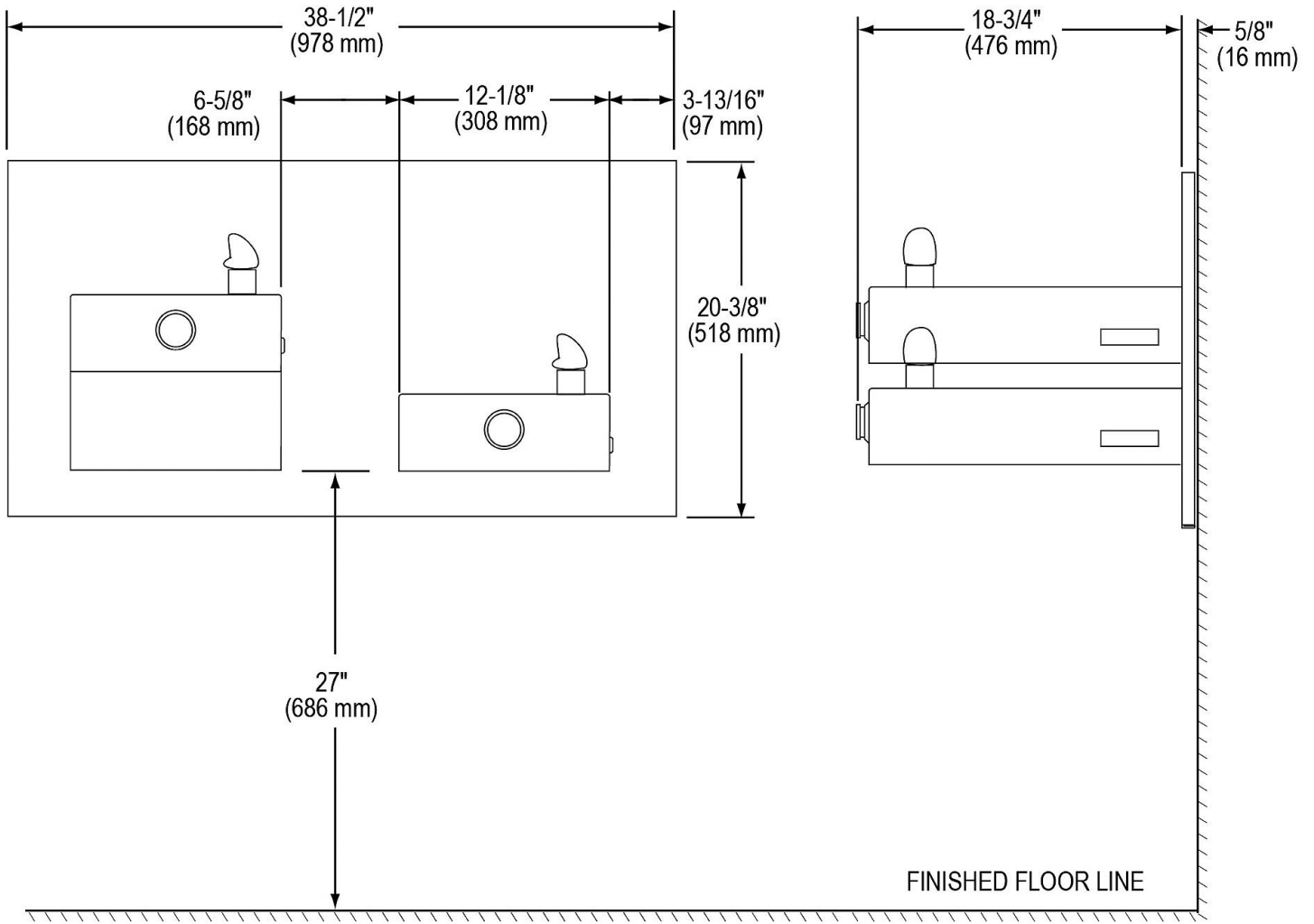
CONTACT: \_\_\_\_\_

DATE: \_\_\_\_\_

NOTES: \_\_\_\_\_

APPROVAL: \_\_\_\_\_

*In keeping with our policy of continuing product improvement, Elkay reserves the right to change product specifications without notice. Please visit [elkay.com](http://elkay.com) for the most current version of Elkay product specification sheets. This specification describes an Elkay product with design, quality, and functional benefits to the user. When making a comparison of other producers' offerings, be certain these features are not overlooked.*



\*A.D.A. Compliant (24" [610mm] for Child A.D.A.). Adjust other measurements accordingly

EHWM17C shown with accessory apron LKAPR2 mounted.

*In keeping with our policy of continuing product improvement, Elkay reserves the right to change product specifications without notice. Please visit [elkay.com](http://elkay.com) for the most current version of Elkay product specification sheets. This specification describes an Elkay product with design, quality, and functional benefits to the user. When making a comparison of other producers' offerings, be certain these features are not overlooked.*