

**PRODUCT SPECIFICATIONS**

Quartz Perfect Drain® Fitting Type 304 Stainless Steel Body and Strainer. Overall dimensions are 4-1/8" x 4-1/8" x 7-1/2". Made of Stainless Steel.

<b>Material:</b>	Stainless Steel
<b>Finish:</b>	Chrome (CR), Lustrous Steel (LS)
<b>Dimensions:</b>	4-1/8" x 4-1/8" x 7-1/2"
<b>Shipping Weight:</b>	1 lbs.

- Special Note:** For Use with Quartz Perfect Drain Only
- Conical strainer basket with metal stem and rubber seal
  - 1-1/2" O.D. x 4" Type 304 stainless steel tailpiece
  - Perfect Drain® FITTING: Designed for use with Elkay® quartz sinks with Perfect Drain®

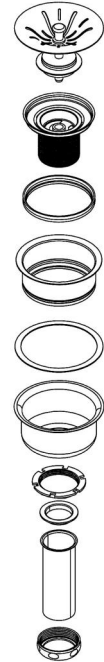
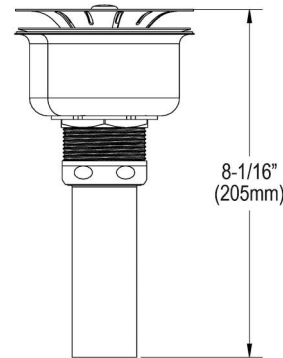
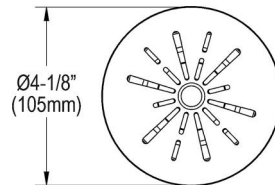


A Century of Tradition and Quality.  
For more than 100 years, Elkay has been making innovative products and providing exceptional customer care. We take pride in offering plumbing products that make life easier, inspire change and leave the world a better place.

**Product Compliance:** ASME A112.18.2/CSA B125.2  
Drains are listed by IAPMO® as meeting the applicable requirements of the Uniform Plumbing Code®, International Plumbing Code®, and National Plumbing Code of Canada.



[Clean and Care Manual \(PDF\)](#)  
[Installation Instructions \(PDF\) - 1000003889](#)



PART: \_\_\_\_\_ QTY: \_\_\_\_\_  
 PROJECT: \_\_\_\_\_  
 CONTACT: \_\_\_\_\_  
 DATE: \_\_\_\_\_  
 NOTES: \_\_\_\_\_  
 APPROVAL: \_\_\_\_\_

*In keeping with our policy of continuing product improvement, Elkay reserves the right to change product specifications without notice. Please visit [elkay.com](http://elkay.com) for the most current version of Elkay product specification sheets. This specification describes an Elkay product with design, quality, and functional benefits to the user. When making a comparison of other producers' offerings, be certain these features are not overlooked.*